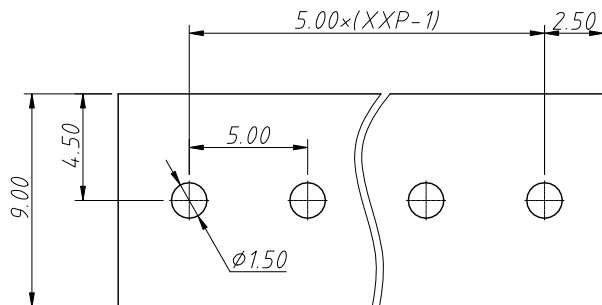
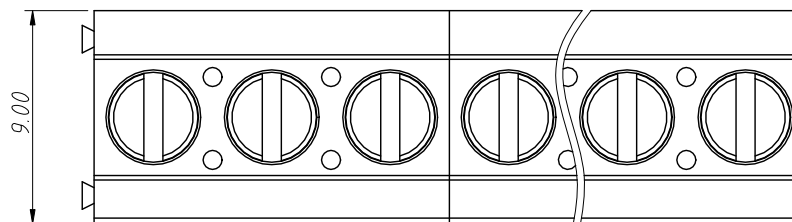


1 RoHS Compliance

REV	SYM	Revision Record	Appr.	Date
V0	KLS02006	New Version Release	Song	2024-11-12



Recommended PCB Layout



Electrical Characteristics	UL	IEC
Rated Voltage	300V	250V
Rated Current	16A	18A
Withstand Voltage	1600V/1min	4.0 KV
Wire Range	22~12 AWG	0.2~2.5 mm ²

Material and other:

Housing:PA66, UL94V-0

Pin Header:Copper Alloy,Sn Plated

Screw/Torque:M2.5/0.4N.m

Stripping Length:6~7mm

Operating Temperature:-40°C ~ +105°C

Soldering Temperature:260°C /5S

Order Information

L-KLS2-125-5.00-XXP-X X

RoHS

Terminal Block

Pitch:5.00mm

No. of (02~24) Pin

Color:

1=Gray

2=Blue

3=Black

4=Green

5=Orange

6=Red

7=Transp

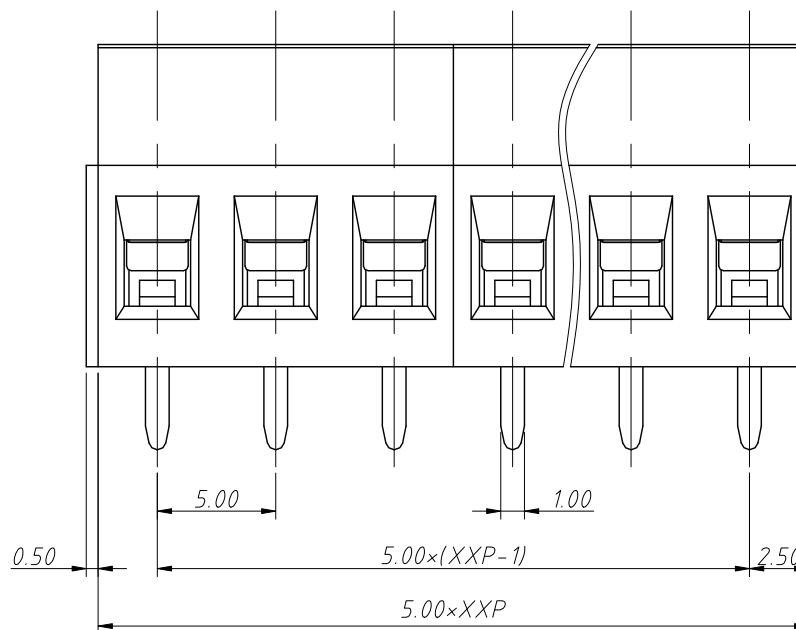
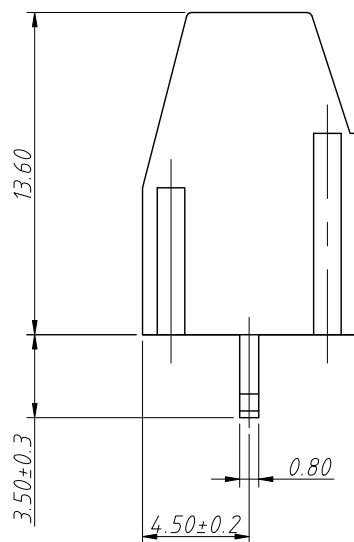
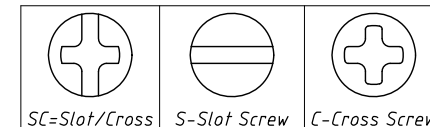
8=Yellow

9=White

Screw:SC=Slot/Cross

S-Slot Screw

C-Cross Screw



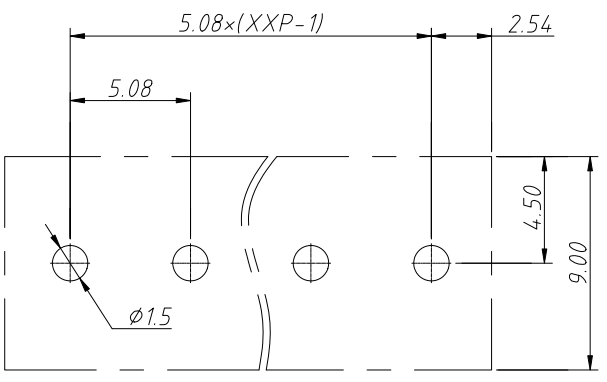
ANGLE TOLERANCE	PROJECTION	Description:	Pitch 5.00mm Terminal Block	
±3°				
GENERAL TOLERANCE	UNITS	mm	KLS P/N:	L-KLS2-125-5.00-XXP-XX
0~30	±0.50	SHEET SIZE	A4	
30~60	±0.75	Draw:	Song	2024-11-12
60~90	±1.00	Check:	Daniel	2024-11-12



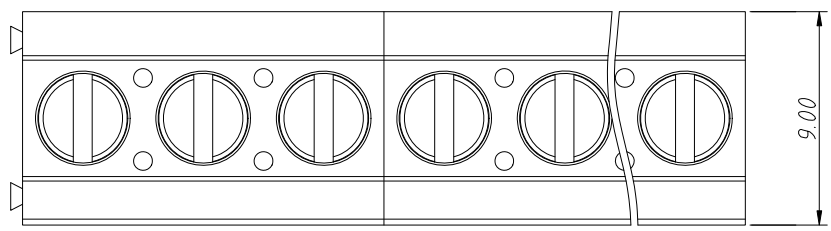
NingBo KLS ELECTRONIC CO.,LTD.

1
RoHS Compliance

REV	SYM	Revision Record	Appr.	Date
V0	KLS02006	New Version Release	Song	2024-09-09

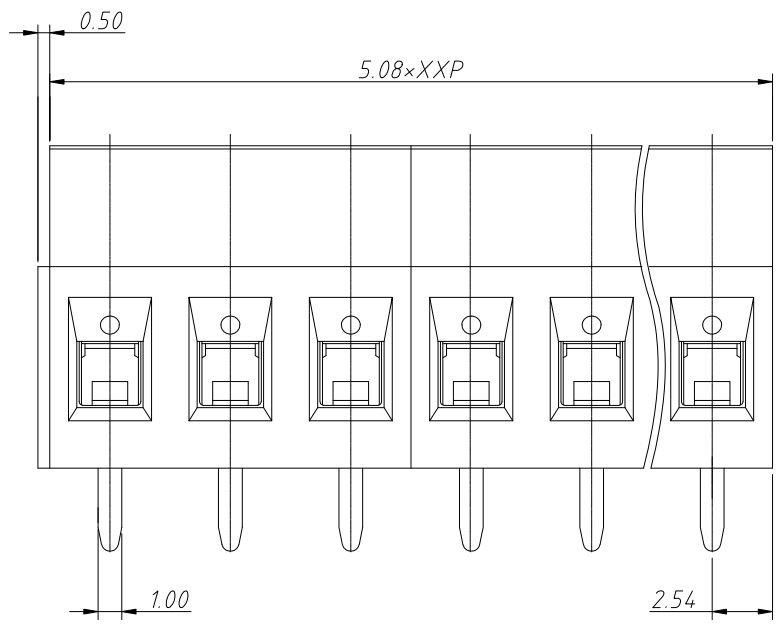
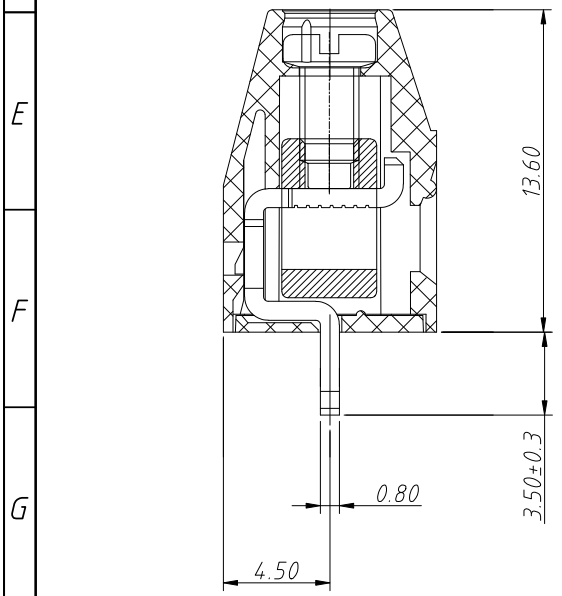


Recommended PCB Layout



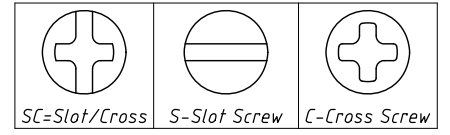
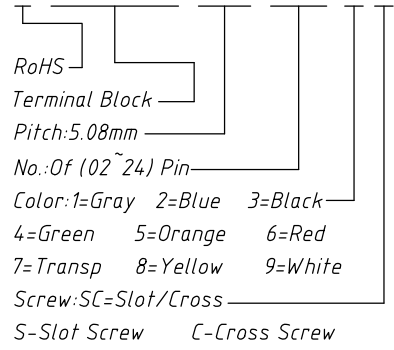
Electrical Characteristics	UL	IEC
Rated Voltage	300V	250V
Rated Current	16A	18A
Withstand Voltage	1600V/min	4.0KV
Wire Range	22~12 AWG	0.2~2.5mm ²

Material and other:
 Housing:PA66, UL94V-0
 Pin Header:Coppo Alloy,Sn Plated
 Screw/Torque:M2.5/0.4N.m
 Stripping Length:6~7mm
 Operating Temperature:-40°C~+105°C



Order Information

L-KLS2-125-5.08-XXP-X X



ANGLE TOLERANCE	PROJECTION	Description:
±3°		Pitch 5.08mm Screw Fixation Terminal Block
GENERAL TOLERANCE	UNITS	mm
0~30	±0.50	SHEET SIZE
30~60	±0.75	Draw:
60~90	±1.00	Check:
		KLS P/N:
		L-KLS2-125-5.08-XXP-XX
		2024-09-09
		2024-09-09

