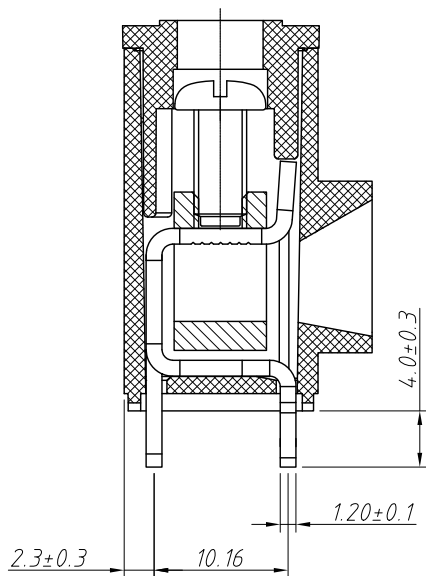
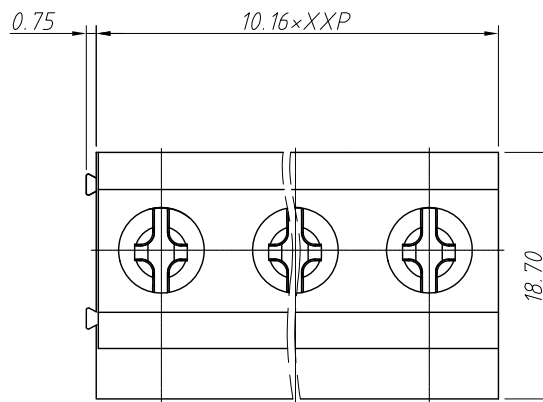
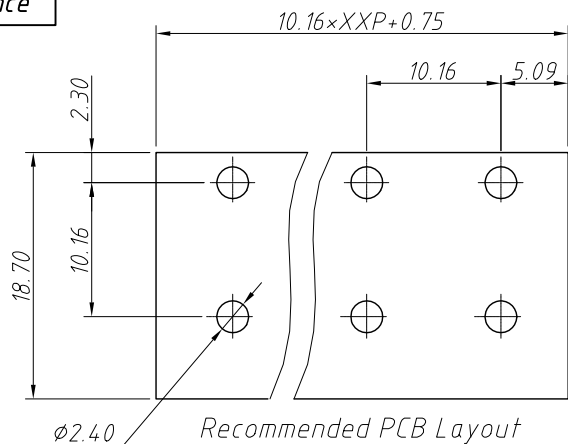
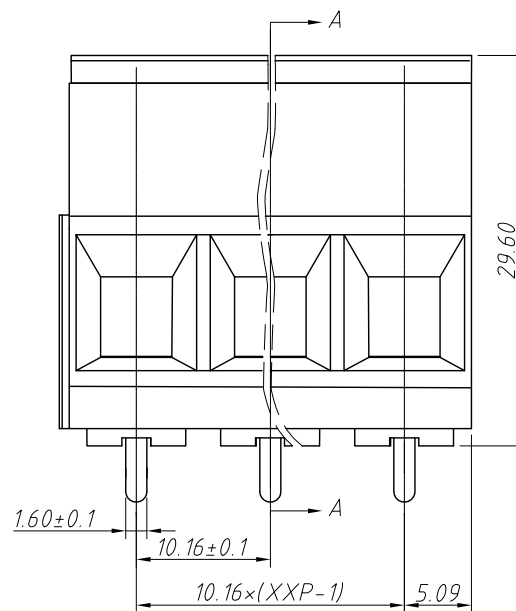


1 RoHS Compliance



SECTION: A-A



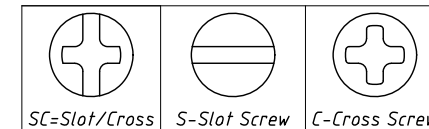
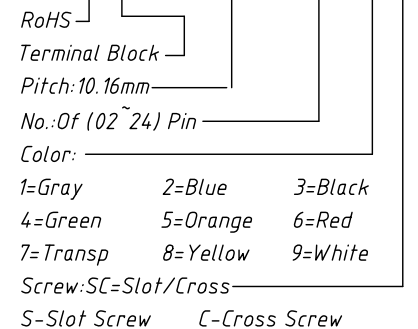
| REV | SYM      | Revision Record     | Appr. | Date       |
|-----|----------|---------------------|-------|------------|
| V0  | KLS02006 | New Version Release | WuHao | 2024-09-19 |

| Electrical Characteristics | UL             | IEC               |
|----------------------------|----------------|-------------------|
| Rated Voltage              | 300V           | 750V              |
| Rated Current              | 52A            | 57A               |
| Withstand Voltage          | AC2000V / 1min | ---               |
| Wire Range                 | 6~20 AWG       | 10mm <sup>2</sup> |

Order Information

L-KLS2-148-10.16-XXP-X X



Material and other:

Housing: PA66, UL94V-0

Pin header: Brass, Tin Plated Cage: Brass, Ni Plated

Screw/Torque: Steel, M4.0 Zn Plated / 1.2N.m Max.

Contact resistance: 20mΩ

Insulation resistance: 500MΩ/DC500V

Steip Length: 10mm

Temp. Range: -40°C ~ +105°C Max Soldering: +250°C, for 5 Sec

| ANGLE TOLERANCE   | PROJECTION | Description:                                |
|-------------------|------------|---|
| ±3°               |            | Pitch 10.16mm Screw fixation Terminal Block |
| GENERAL TOLERANCE | UNITS      | mm  |
| 0~30              | ±0.50      | SHEET SIZE                                  |
| 30~60             | ±0.75      | Draw: WuHao                                 |
| 60~90             | ±1.00      | Check: Daniel                               |



NingBo KLS ELECTRONIC CO., L TD.