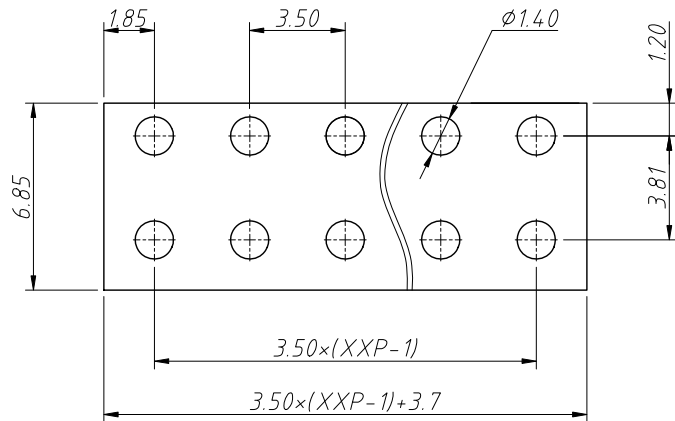
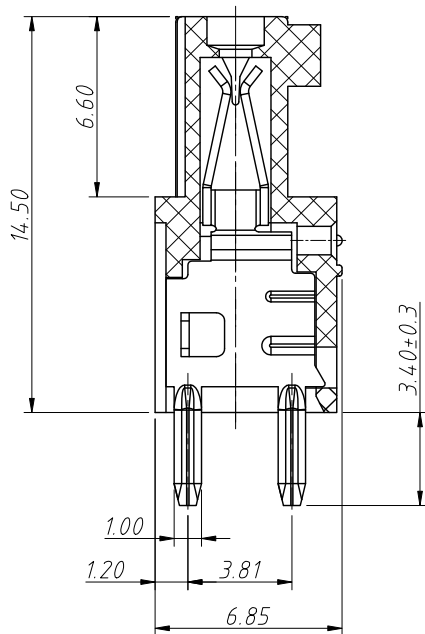
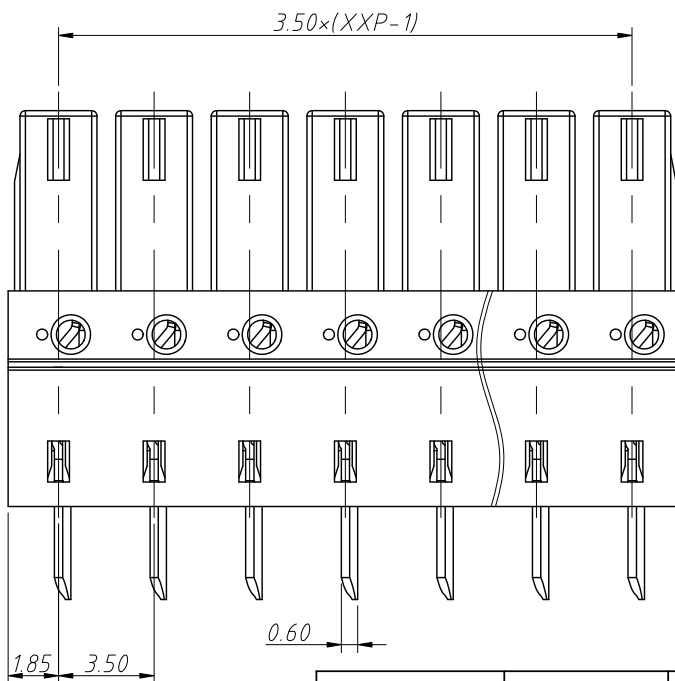
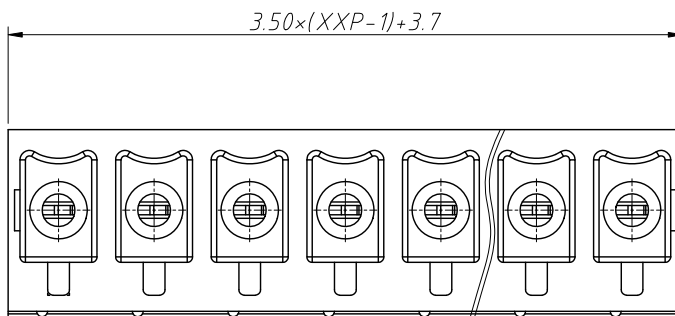


1 RoHS Compliance

REV	SYM	Revision Record	Appr.	Date
V0	KLS02006	New Version Release	Jenny	2024-09-03



Recommended PCB Layout



Electrical Characteristics	UL	IEC
Rated Voltage	300V	250V
Rated Current	8A	10A
Withstand Voltage	1500V / 1 min	---

Material and other:

Housing: PA66, UL94V-0

Pin: Copper alloy, Sn Plated

Contact resistance: 20mΩ

Insulation resistance: 500MΩ/DC500V

Temp. Range: -40°C ~ +105°C

Order Information

L-KLS2-EDKH-3.50-XXP-4

RoHS

Terminal Block

Pitch: 3.50mm

No.: Of (02~24) Pin

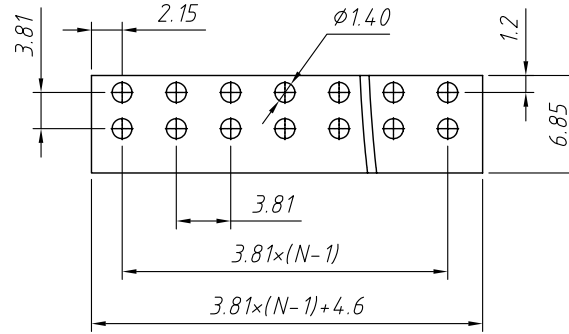
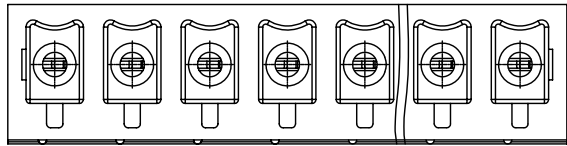
Color:

- 1=Gray 2=Blue 3=Black
- 4=Green 5=Orange 6=Red
- 7=Transp 8=Yellow 9=White

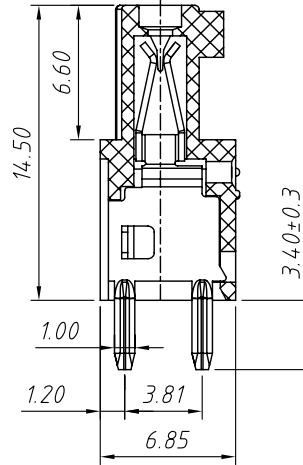
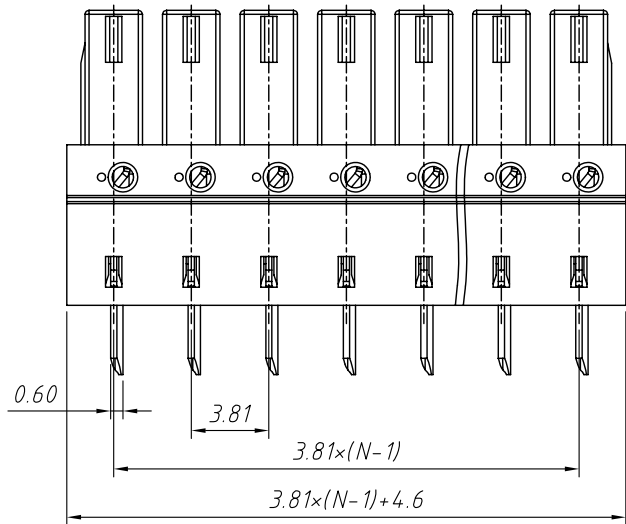
ANGLE TOLERANCE	PROJECTION	Description:	Pitch 3.50mm Terminal Block	
±3°				
GENERAL TOLERANCE	UNITS	mm	KLS P/N:	L-KLS2-EDKH-3.50-XXP-4
0~30	±0.50	SHEET SIZE	A4	
30~60	±0.75	Draw:	Jenny	2024-09-03
60~90	±1.00	Check:	Daniel	2024-09-03



NingBo KLS ELECTRONIC CO.,L TD.



PCB LAYOUT



Material
Housing: PA66, UL 94V-0
Clamp: Phosphor Bronze, Tin plated

Electrical
Rated voltage: 300V
Rated current: 8A
Contact Resistance: 20 mΩ
Insulation resistance: 500MΩ/DC500V
Withstand voltage: AC1250V / 1 min

Mechanical
Temp. Range: -40 °C ~ +105 °C

Order Information

L-KLS2-EDKH-3.81-XXP-4 00
 RoHS
 Terminal Block
 Pitch
 No.: of Pole
 Color: 4- Green
 Product Code: 00~99

GENERAL TOLERANCE		ANGLE TOLERANCE		Description:	
X. ±0.60		X. ±5°		Pluggable Terminal Block 3.81 MM	
.X ±0.38		.X ±3°		KLS P/N:	KLS2-EDKH-3.81-XXP-4-00
.XX ±0.25		.XX ±2°			
Draw by	2015-09-01	PROJECTION		NingBo KLS ELECTRONIC CO.,L TD.	
Check by	2015-09-15	UNITS	mm		
SCALE		SHEET SIZE	A4		