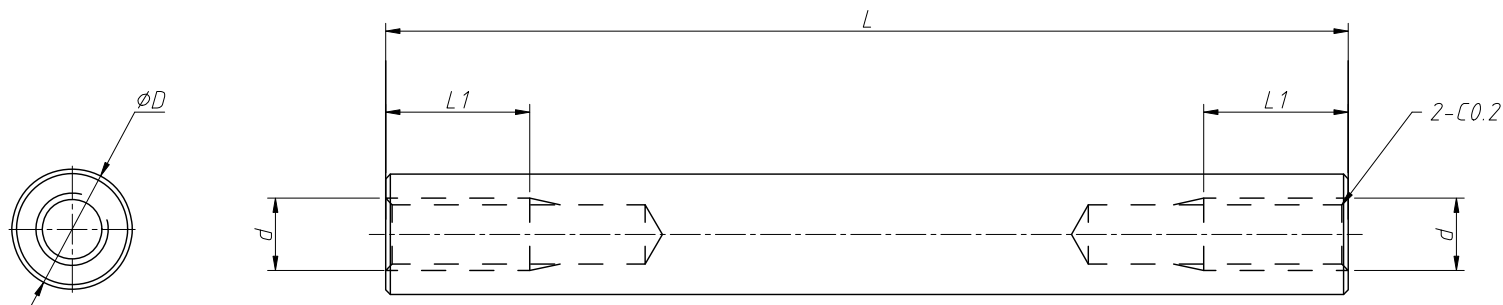


1
RoHS Compliance

| | | |
|-----|----------|---------------------|
| 6 | 7 | 8 |
| REV | SYM | Revision Record |
| V0 | KLS08063 | New Version Release |
| | | Appr. Song |
| | | Date 2024-09-23 |



| ITEM | d | D | L | L1 | Plated:-(A) |
|-----------------------------|------|-----|--------|--|-----------------------------|
| L-KLS8-PCSS-M2-E5.0-LXX | M2 | 5.0 | 4-60mm | 4-20 allows for penetration, 21-60:6mm | Blank:Clean -A:Ni Plated |
| L-KLS8-PCSS-M2-E5.0-LXX-A | M2 | | | | |
| L-KLS8-PCSS-M2.5-E5.0-LXX | M2.5 | | | | |
| L-KLS8-PCSS-M2.5-E5.0-LXX-A | M2.5 | | | | |
| L-KLS8-PCSS-M3-E5.0-LXX | M3 | | | | |
| L-KLS8-PCSS-M3-E5.0-LXX-A | M3 | | | | |

Notes:

1.Materials:Brass H59,

Clean Or Ni Plated

2.All Unmarked Chamfers are C0.2 Max

3.All Unmarked Tolerances are GB/T1804-m

| | | |
|-------------------|---------------|---------------------------------|
| ANGLE TOLERANCE | PROJECTION | Description: |
| ±3° | | Brass Threaded Spacer |
| GENERAL TOLERANCE | UNITS | KLS P/N: |
| .x ±0.30 | mm | L-KLS8-PCSS-MX-E5.0-LXX |
| .xx ±0.20 | SHEET SIZE | NingBo KLS ELECTRONIC CO.,L TD. |
| .xxx ±0.10 | A4 | |
| | Draw: Song | |
| | Check: Daniel | 2024-09-23 |