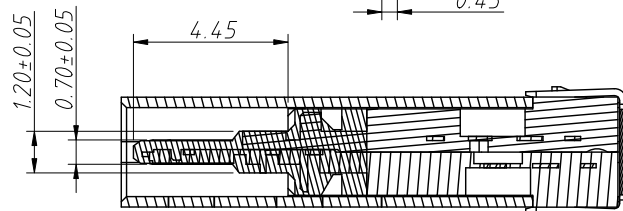
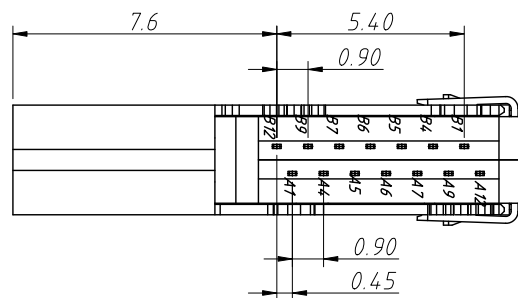
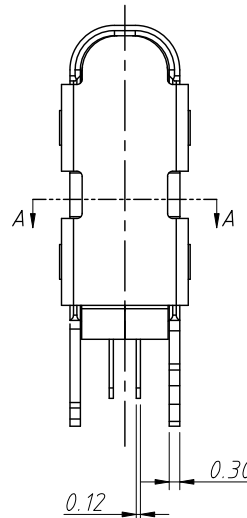
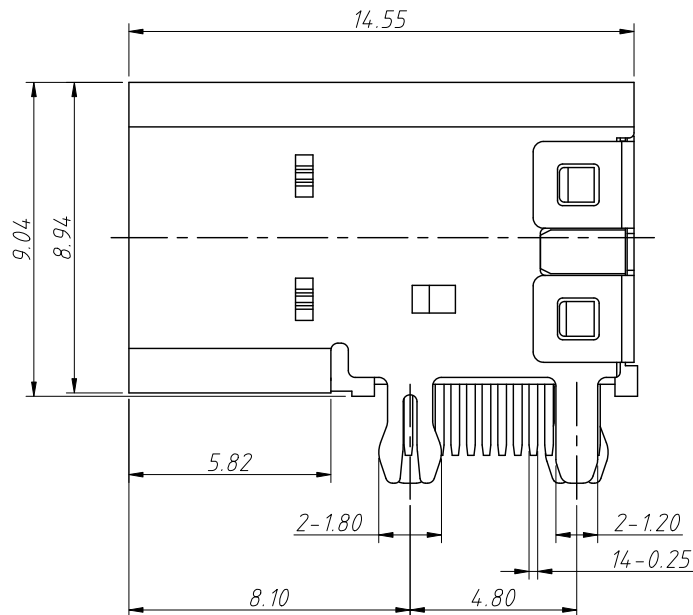
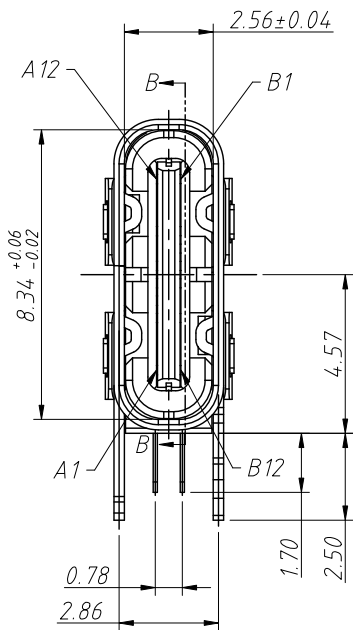
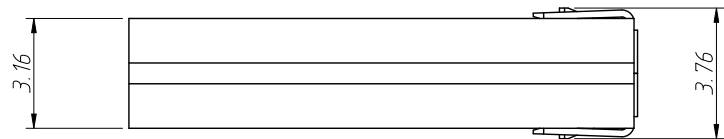


1 RoHS Compliance

7		8		
REV	SYM	Revision Record	Appr.	Date
V0	KLS01640	New Version Release	Song	2024-12-25



SECTION A-A

NOTES:

1.Material:

- 1-1.Housing:PA9T,UL 94 V-0
- 1-2.Terminal:Copper Alloy(C18150)
- 1-3.Mid Plate:Stainless Steel(SUS301)
- 1-4.Front Shell: Stainless Steel(SUS304)
- 1-5.Cover: Stainless Steel(SUS304)

2.Plating Specification:

- 2-1.Terminal:Ni 50u" Min.Under Plated Over All  
Au Plated On The Functional Area Of Contact  
Au Plated On The Solder Area
- 2-2.Front Shell:Ni 30u"Min Under Plated Over All
- 2-3.Mid Plate&Cover:Clear Only

3.Mechanical:

- 3-1.Insertion Force:0.5~2.0kgf
- 3-2.Removal Force:0.8kgf~2.0kgf
- 3-3.Durability:10000 Cycles

4.Electrical:

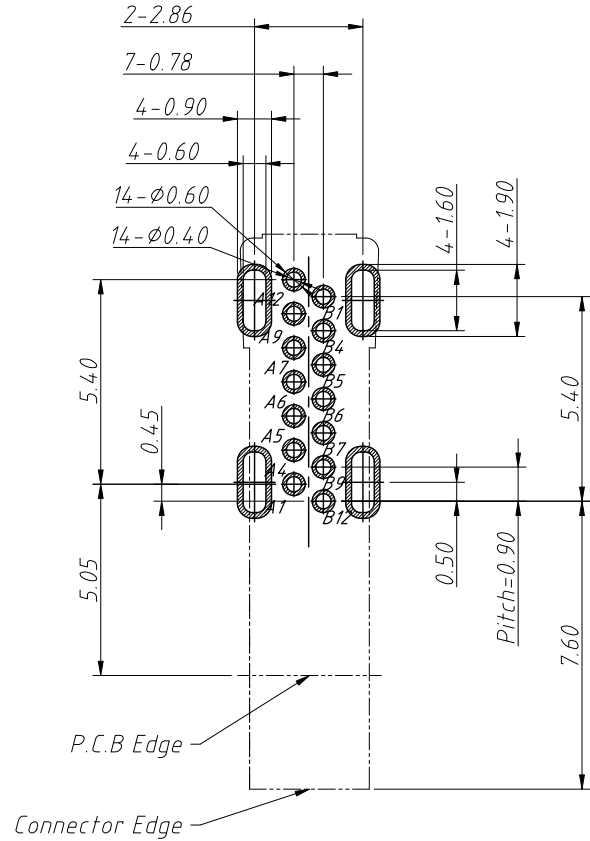
- 4-1.Voltage Rating:5 V DC/AC (RMS. Max)  
Current Rating:5 AMPS. For Total VBUS/GND Pins  
1.25AMPS For CC Pin,0.25 AMPS. For All Other Contact
- 4-2.LLCR:Vbus & GND Pins And Other Pins:40mΩ/Pin Max  
LLCR Max.Change Of All Pins:10mΩ
- 4-3.Insulation Resistance:100MΩ Min
- 4-4.Dielectric Withstand Voltage:AC 100V For 1 Minute
- 5.Operating Temperature:-25°C~+85°C
- 6.IR Reflow:The Peak Temperature On The Board Shall Be  
Maintained For 10 Seconds At 260°C

ANGLE TOLERANCE	PROJECTION	Description:	USB Type-C Connector	
±3°				
GENERAL TOLERANCE	UNITS	mm	KLS P/N:	L-KLS1-5417-01-R
.x ±0.30	SHEET SIZE	A4	1 of 3	
.xx ±0.20	Draw:	Song	2024-12-25	
.xxx ±0.10	Check:	Daniel	2024-12-25	

NingBo KLS ELECTRONIC CO.,LTD.

1 RoHS Compliance

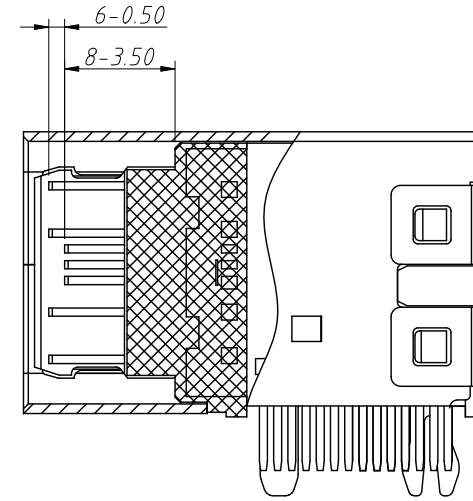
REV	SYM	Revision Record	Appr.	Date
V0	KLS01640	New Version Release	Song	2024-12-25



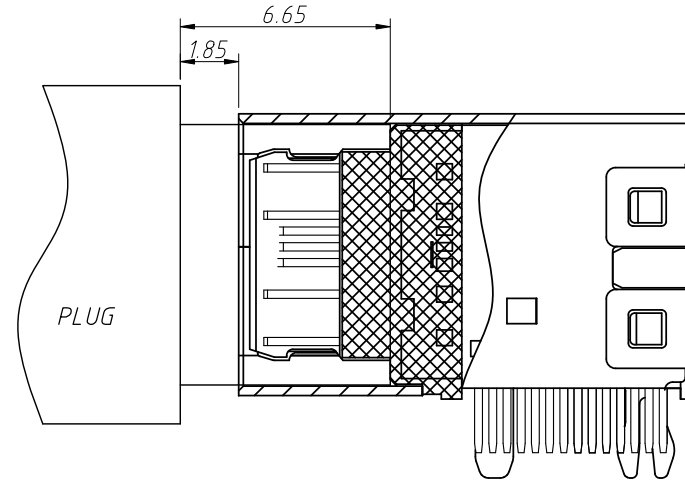
Recommended PCB Layout  
Tolerance: ±0.05mm

USB TYPE-C PIN Assignments

PIN	Signal Name	PIN	Signal Name
A1	GND	B12	GND
A4	VBUS	B9	VBUS
A5	CC1	B7	DN2
A6	DP1	B6	DP2
A7	DN1	B5	CC2
A9	VBUS	B4	VBUS
A12	GND	B1	GND



SECTION B-B

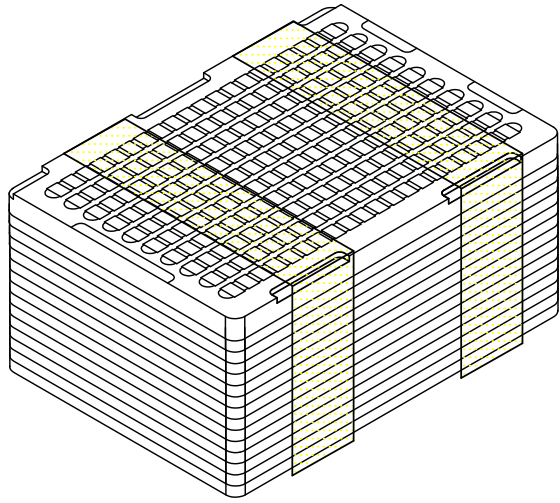


AFTER MATING

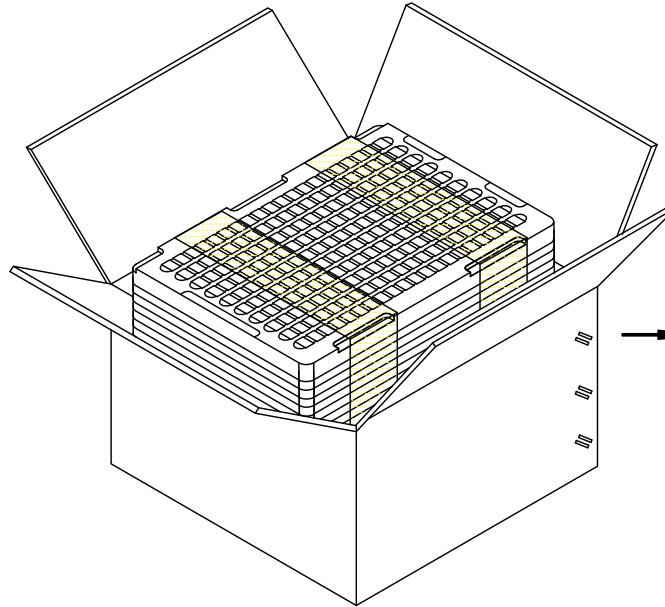
ANGLE TOLERANCE	PROJECTION	Description:	USB Type-C Connector	
±3°				
GENERAL TOLERANCE	UNITS	mm	KLS P/N:	L-KLS1-5417-01-R
.x ±0.30	SHEET SIZE	A4	2 Of 3	NingBo KLS ELECTRONIC CO.,L.TD.
.xx ±0.20	Draw:	Song	2024-12-25	
.xxx ±0.10	Check:	Daniel	2024-12-25	

1 RoHS Compliance

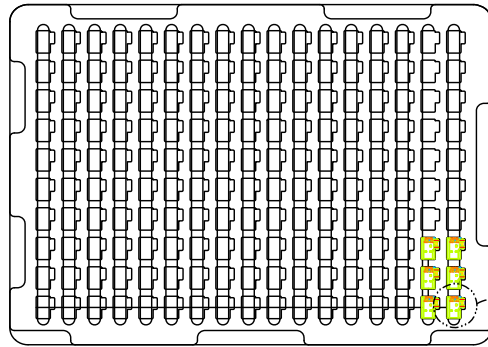
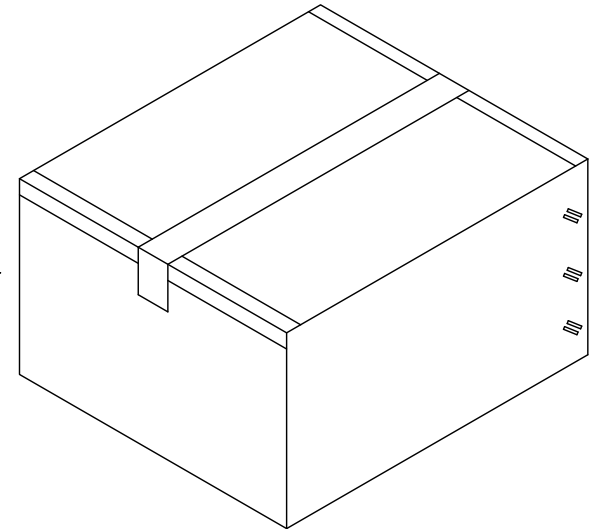
6		7		8	
REV	SYM	Revision Record		Appr.	Date
V0	KLS01640	New Version Release		Song	2024-12-25



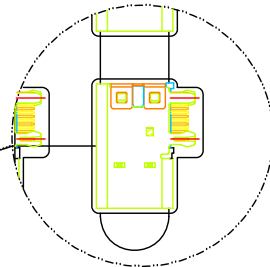
EACH BUNDLE WITH 10 LAYERS  
IN ALL 4 BUNDLE



EACH CARTON WITH 6800 PCS PRODUCTS



170PCS/TRAY



ANGLE TOLERANCE		PROJECTION		Description:	
$\pm 3^\circ$				USB Type-C Connector	
GENERAL TOLERANCE		UNITS	mm	KLS P/N:	
.x	$\pm 0.30$	SHEET SIZE	A4	L-KLS1-5417-01-R	
.xx	$\pm 0.20$	Draw:	Song	3 Of 3	
.xxx	$\pm 0.10$	Check:	Daniel	2024-12-25	



NingBo KLS ELECTRONIC CO.,LTD.