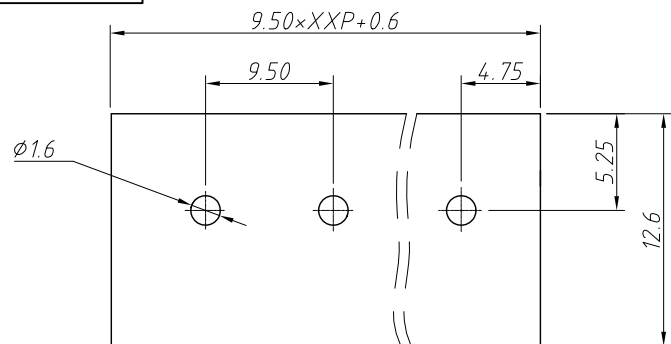
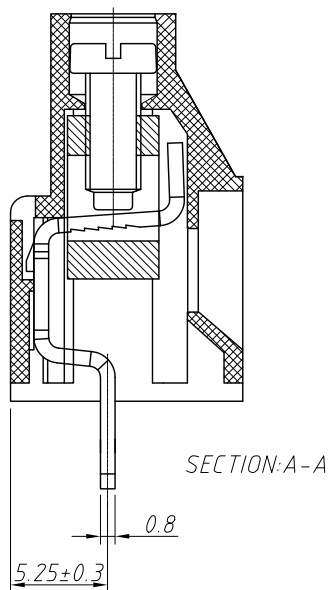


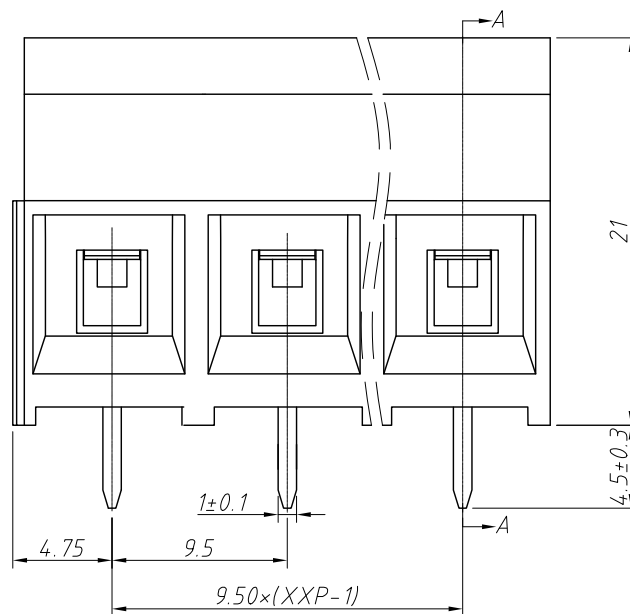
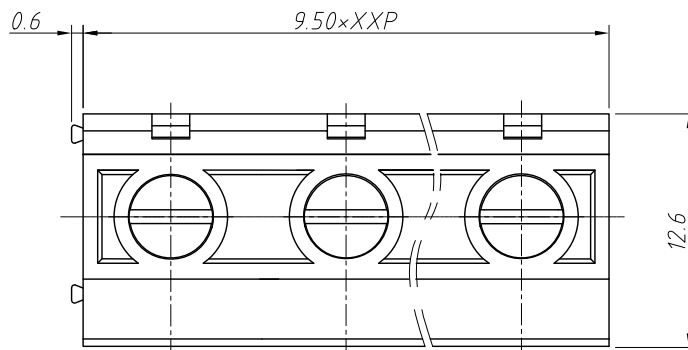
1 RoHS Compliance



Recommended PCB Layout



Material and other:
 Housing: PA66, UL 94V-0
 Pin header: Brass, Tin Plated
 Cage: Brass, Ni Plated
 Screw/Torque: Steel, M3.0 Zn Plated / 0.5N.m Max.
 Contact resistance: 20mΩ
 Insulation resistance: 500MΩ/DC500V
 Steip Length: 6-7mm
 Max Soldering: +250°C, for 5 Sec



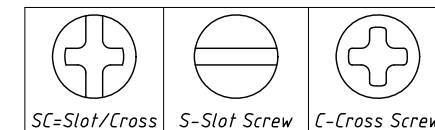
Temp. Range: -40°C ~ +105°C

| | | | |
|----------------------------|----------|---------------------|------------------|
| 7 | | 8 | |
| REV | SYM | Revision Record | Appr. |
| V0 | KLS02006 | New Version Release | WuHao |
| Date | | 2024-09-19 | |
| Electrical Characteristics | | UL | IEC |
| Rated Voltage | | 300V | 450V |
| Rated Current | | 30A | 32A |
| Withstand Voltage | | AC2000V / 1min | --- |
| Wire Range | | 10~26 AWG | 4mm ² |

Order Information

L-KLS2-150-9.50-XXP-X X

RoHS
 Terminal Block
 Pitch: 9.50mm
 No.: Of (02~24) Pin
 Color:
 1=Gray 2=Blue 3=Black
 4=Green 5=Orange 6=Red
 7=Transp 8=Yellow 9=White
 Screw: SC=Slot/Cross
 S-Slot Screw C-Cross Screw



| | | | |
|-------------------|------------|--|------------------------|
| ANGLE TOLERANCE | PROJECTION | Description: | |
| ±3° | | Pitch 9.50mm Screw fixation Terminal Block | |
| GENERAL TOLERANCE | UNITS | mm | KLS P/N: |
| 0~30 ±0.50 | SHEET SIZE | A4 | L-KLS2-150-9.50-XXP-XX |
| 30~60 ±0.75 | Draw: | WuHao | 2024-09-19 |
| 60~90 ±1.00 | Check: | Daniel | 2024-09-19 |



NingBo KLS ELECTRONIC CO.,L TD.