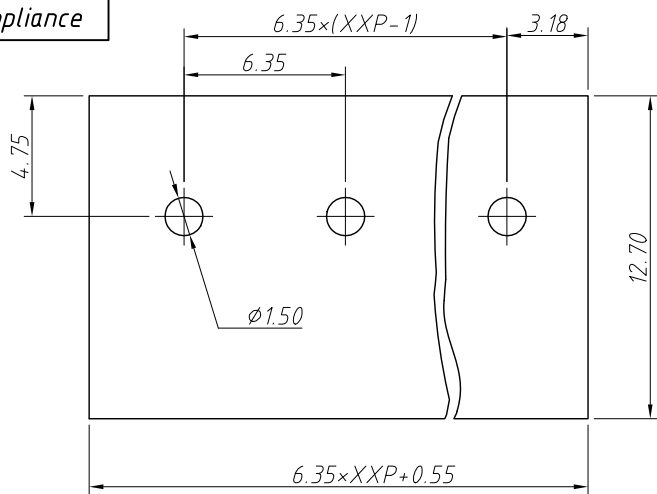
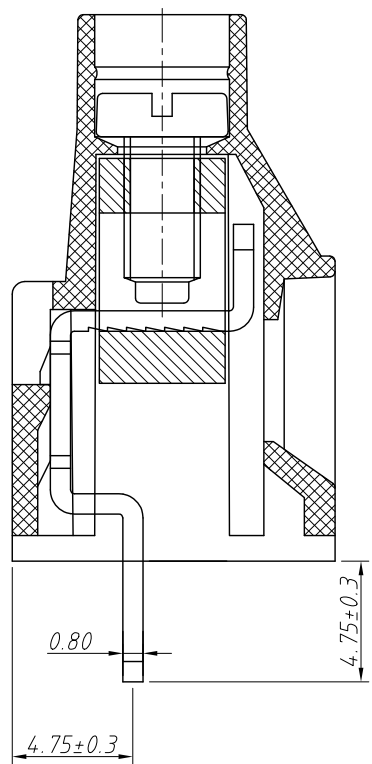
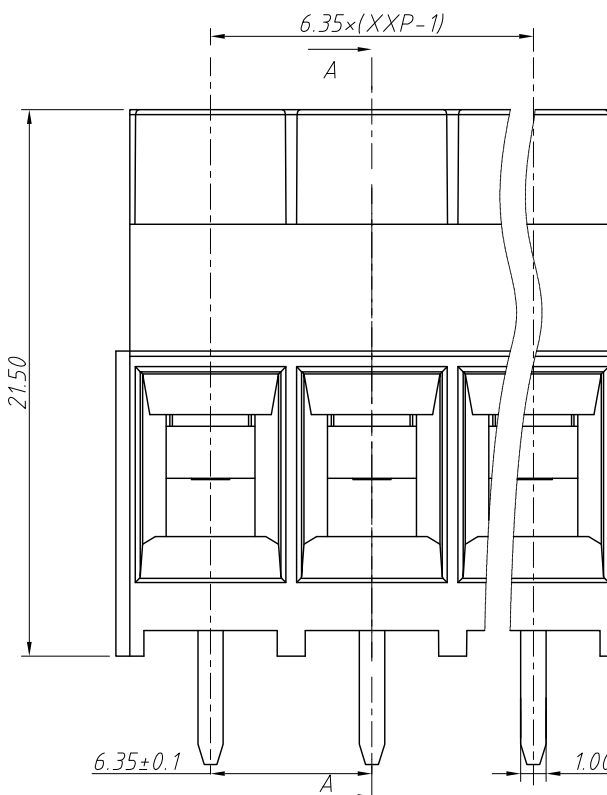
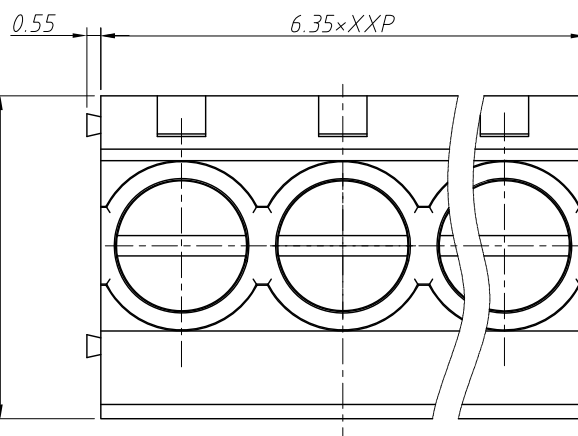


1 RoHS Compliance



6.35×XXP+0.55
Recommended PCB Layout



SECTION: A-A

Material and other:
 Housing: PA66, UL94V-0
 Pin header: Brass, Tin Plated
 Cage: Brass, Ni Plated
 Screw: Steel, M3 Zn Plated
 Torque: 0.5N.m Max.
 Contact resistance: 20mΩ
 Insulation resistance: 500MΩ/DC500V
 Steip Length: 6-7mm
 Max Soldering: +250°C, for 5 Sec
 Temp. Range: -40°C ~ +105°C

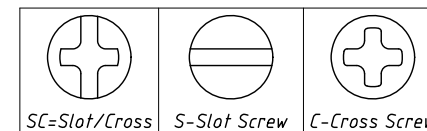
REV	SYM	Revision Record	Appr.	Date
V0	KLS02006	New Version Release	WuHao	2024-09-19

Electrical Characteristics	UL	IEC
Rated Voltage	300V	450V
Rated Current	30A	32A
Withstand Voltage	AC2000V / 1min	---
Wire Range	10~26 AWG	4mm ²

Order Information

L-KLS2-135-6.35-XXP-X X

RoHS
 Terminal Block
 Pitch: 6.35mm
 No.: Of (02~24) Pin
 Color:
 1=Gray 2=Blue 3=Black
 4=Green 5=Orange 6=Red
 7=Transp 8=Yellow 9=White
 Screw: SC=Slot/Cross
 S=Slot Screw C=Cross Screw



ANGLE TOLERANCE	PROJECTION	Description:
±3°		Pitch 6.35mm Screw fixation Terminal Block
GENERAL TOLERANCE	UNITS	mm
0~30	±0.50	SHEET SIZE
30~60	±0.75	Draw:
60~90	±1.00	Check:
		KLS P/N:
		L-KLS2-135-6.35-XXP-XX
		WuHao 2024-09-19
		Daniel 2024-09-19



NingBo KLS ELECTRONIC CO.,L TD.