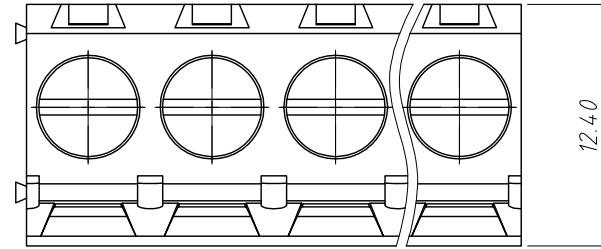
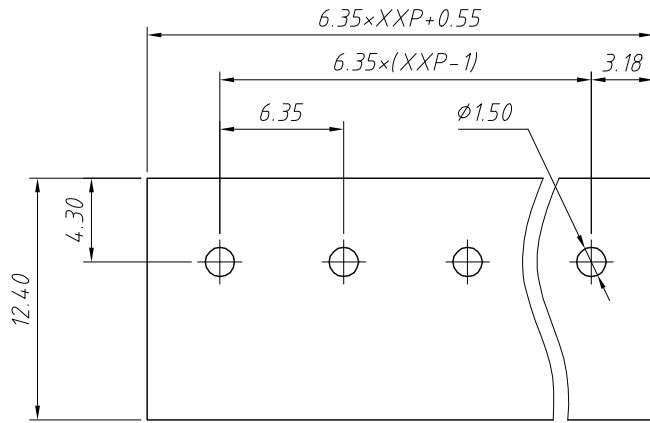
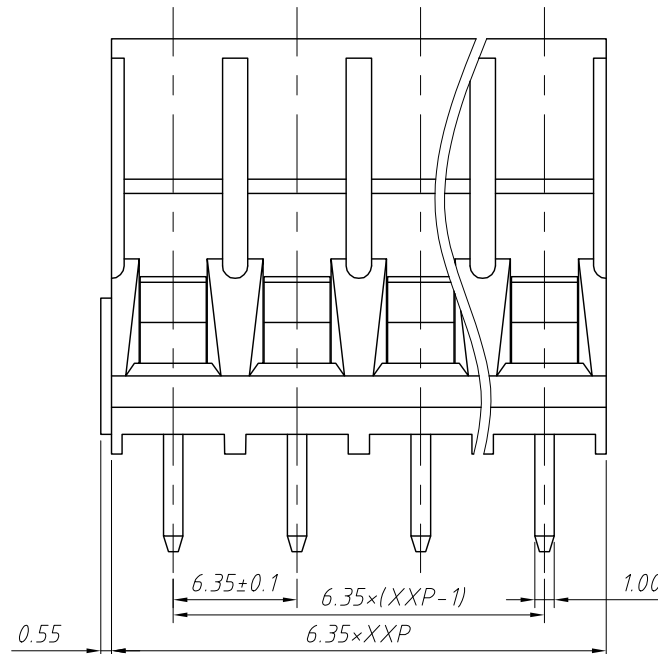
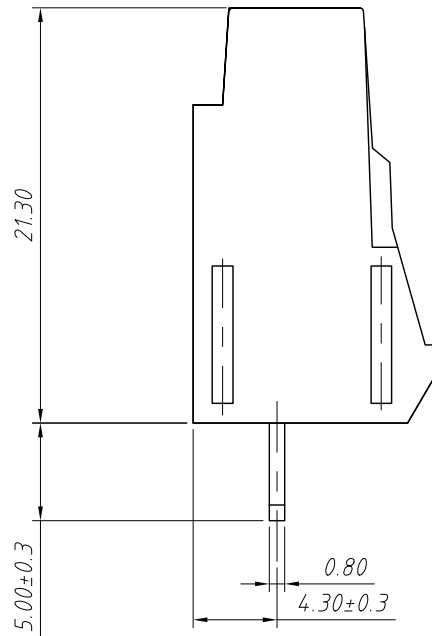


1 RoHS Compliance



Recommended PCB Layout



| | | | | |
|-----|----------|---------------------|-------|------------|
| REV | SYM | Revision Record | Appr. | Date |
| V0 | KLS02006 | New Version Release | WuHao | 2024-11-13 |

| | | |
|----------------------------|-------------|------------------------|
| Electrical Characteristics | UL | IEC |
| Rated Voltage | 300V | 400V |
| Rated Current | 30A | 32A |
| Withstand Voltage | 1600V/1 min | 6.0 KV |
| Wire Range | 26~10 AWG | 0.5~4.0mm ² |

Material

Housing:PA66,UL94V-0

Pin Header:Copper alloy,Sn plated

Screw/Torque:M3.0/0.5N.m Max

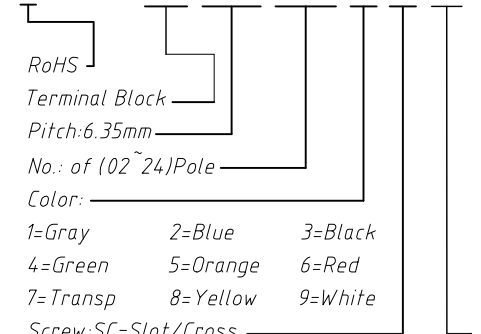
Stripping Length:7~8 mm

Operating Temperature:-40°C ~ +105°C

Soldering Temperature:+260°C,For 5 Sec

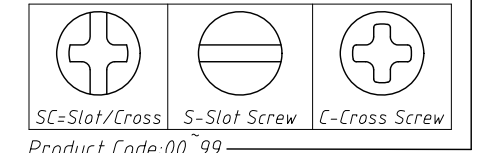
Order Information

L-KLS2-136-6.35-XXP-X X 09



Screw:SC=Slot/Cross

S-Slot Screw C-Cross Screw



| | | |
|-------------------|------------|---------------------------------|
| ANGLE TOLERANCE | PROJECTION | Description: |
| ±3° | | Pitch 6.35mm Terminal Blocks |
| GENERAL TOLERANCE | UNITS | mm |
| x.x ±0.30 | SHEET SIZE | A4 |
| x.xx ±0.20 | Draw: | WuHao 2024-11-13 |
| x.xxx ±0.10 | Check: | Daniel 2024-11-13 |
| KLS ELECTRONIC | | NingBo KLS ELECTRONIC CO.,L TD. |