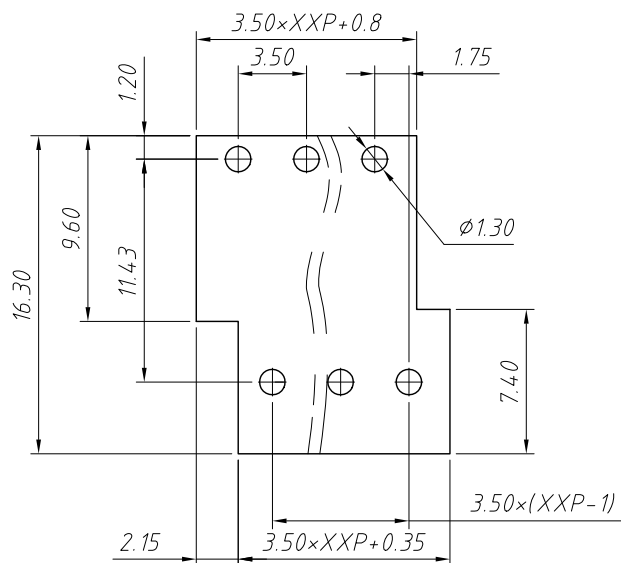
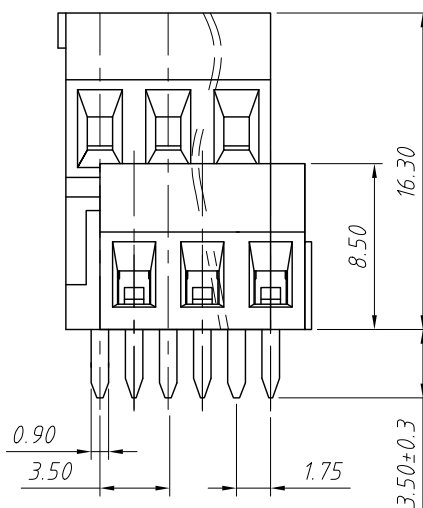
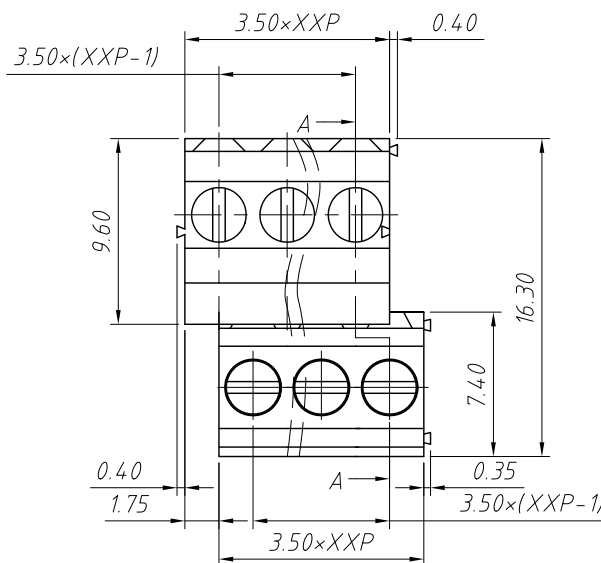
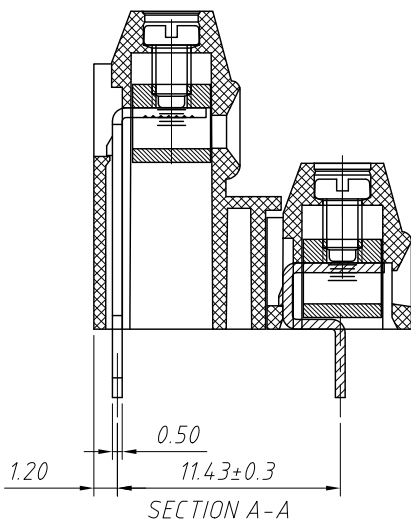


1 RoHS Compliance



Recommended PCB Layout



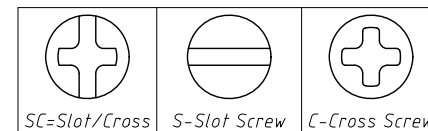
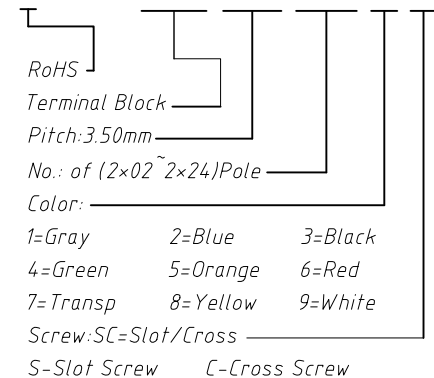
6	7	8
REV	SYM	Revision Record
V0	KLS02006	New Version Release
		Appr. WuHao
		Date 2024-11-12

Electrical Characteristics	UL	IEC
Rated Voltage	300V	160V
Rated Current	10A	13.5A
Withstand Voltage	AC2000V/1min	---
Wire Range	30~14 AWG	1.0mm ²

Material
 Housing: PA66, UL94V-0 Pin Header: Copper Alloy, Sn plated
 Cage: Copper Alloy, Ni Plated Steip Length: 4~5 mm
 Screw/Torque: Steel, M2.0, Zn Plated/0.2N.m Max
 Temp. Range: -40°C ~ +105°C Soldering: +250°C, For 5 Sec
 Contact resistance: 20mΩ MAX
 Insulation resistance: 500MΩ/DC500V

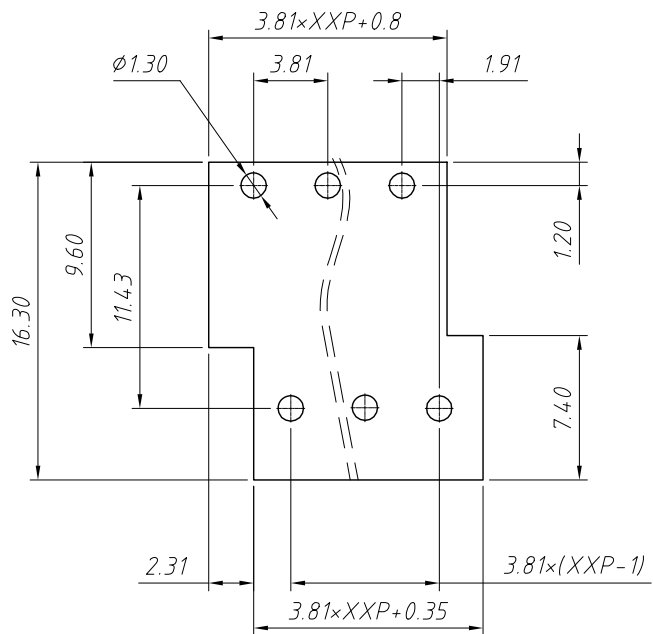
Order Information

L-KLS2-125A-3.50-XXP-X X

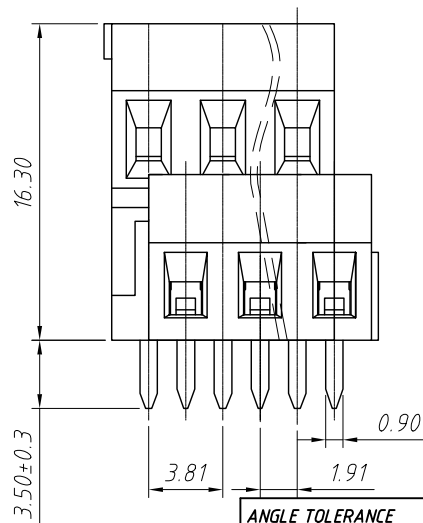
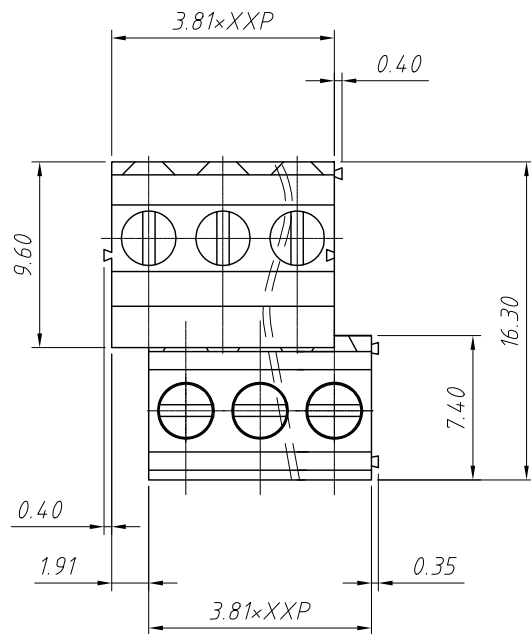
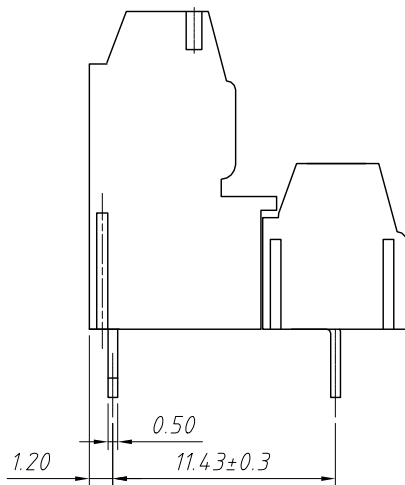


ANGLE TOLERANCE	PROJECTION	Description:
±3°		Pitch 3.50mm Terminal Blocks
GENERAL TOLERANCE	UNITS	mm
x.x ±0.30	SHEET SIZE	A4
x.xx ±0.20	Draw:	WuHao 2024-11-12
x.xxx ±0.10	Check:	Daniel 2024-11-12
		KLS NingBo KLS ELECTRONIC CO.,L TD.

1
RoHS Compliance



Recommended PCB Layout



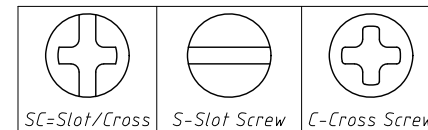
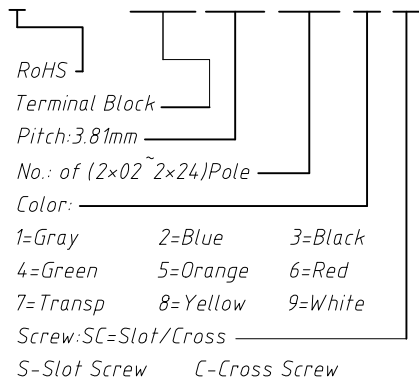
6		7		8	
REV	SYM	Revision Record	Appr.	Date	
V0	KLS02006	New Version Release	WuHao	2024-11-12	

Electrical Characteristics	UL	IEC
Rated Voltage	300V	160V
Rated Current	10A	13.5A
Withstand Voltage	1600V/1 min	2.5 KV
Wire Range	28~16 AWG	0.5~1.0mm ²

Material
 Housing:PA66,UL94V-0
 Pin Header:Copper Alloy,Sn plated
 Steip Length:4~5 mm
 Screw/Torque:M2.0/0.2N.m Max
 Operating Temperature:-40°C ~ +105°C
 Soldering Temperature:+260°C,For 5 Sec

Order Information

L-KLS2-125A-3.81-XXP-X X



ANGLE TOLERANCE	PROJECTION	Description:			
±3°		Pitch 3.81mm Terminal Blocks			
GENERAL TOLERANCE	UNITS	mm	KLS P/N:		
x.x ±0.30	SHEET SIZE	A4	L-KLS2-125A-3.81-XXP-XX		
x.xx ±0.20	Draw:	WuHao	2024-11-12	NingBo KLS ELECTRONIC CO.,L TD.	
x.xxx ±0.10	Check:	Daniel	2024-11-12		