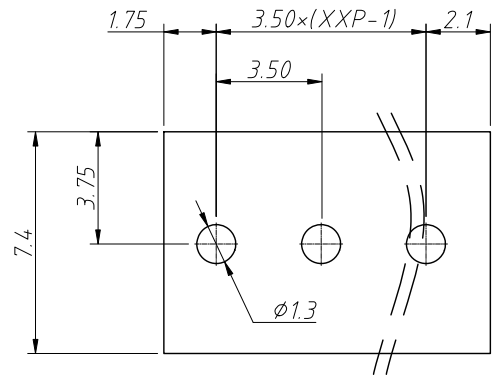
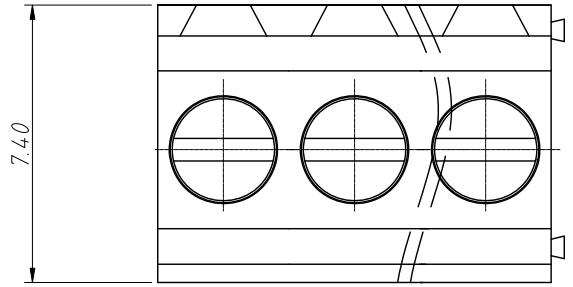


1  
RoHS Compliance

6		7		8	
REV	SYM	Revision Record		Appr.	Date
V0	KLS02006	New Version Release		Song	2024-09-09

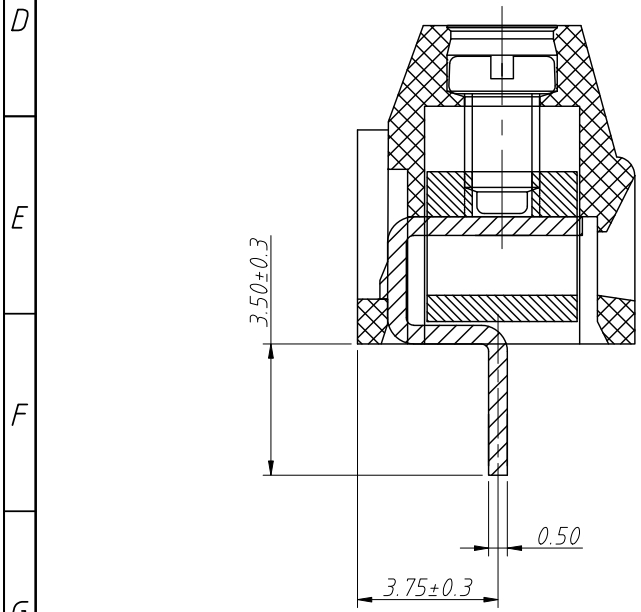


Recommended PCB Layout

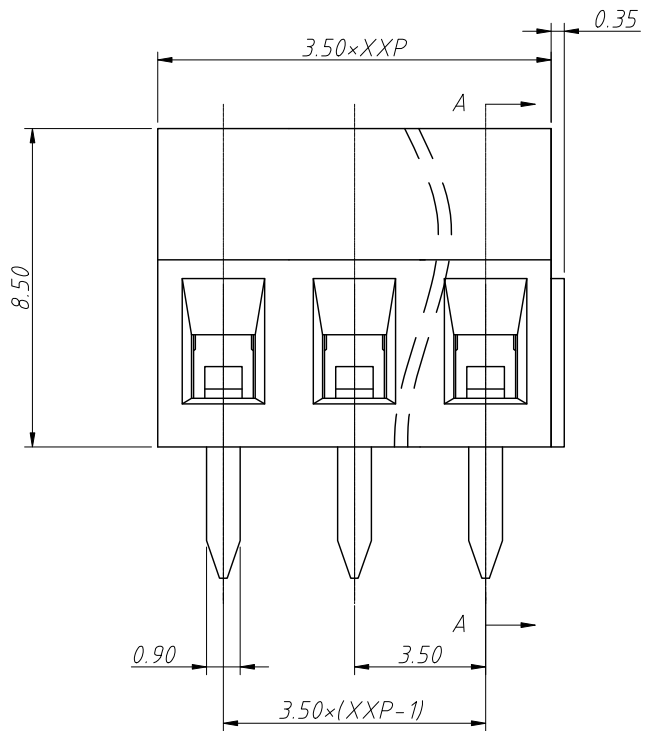


Electrical Characteristics	UL	IEC
Rated Voltage	300V	160V
Rated Current	10A	13.5A
Withstand Voltage	1600V/1min	2.5KV
Wire Range	28~16 AWG	0.5~1.0mm <sup>2</sup>

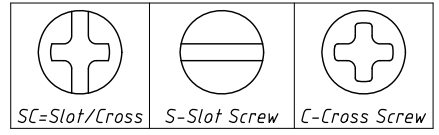
Material and other:  
 Housing:PA66, UL94V-0  
 Pin Header:Coppo Alloy, Sn Plated  
 Screw/Torque:M2/0.2N.m  
 Stripping Length:4~5mm  
 Operating Temperature:-40°C~+105°C



SECTION A-A



Order Information  
 L-KLS2-125-3.50-XXP-X X  
 RoHS  
 Terminal Block  
 Pitch:3.50mm  
 No.:Of (02~24) Pin  
 Color:1=Gray 2=Blue 3=Black  
 4=Green 5=Orange 6=Red  
 7=Transp 8=Yellow 9=White  
 Screw:SC=Slot/Cross  
 S-Slot Screw C-Cross Screw

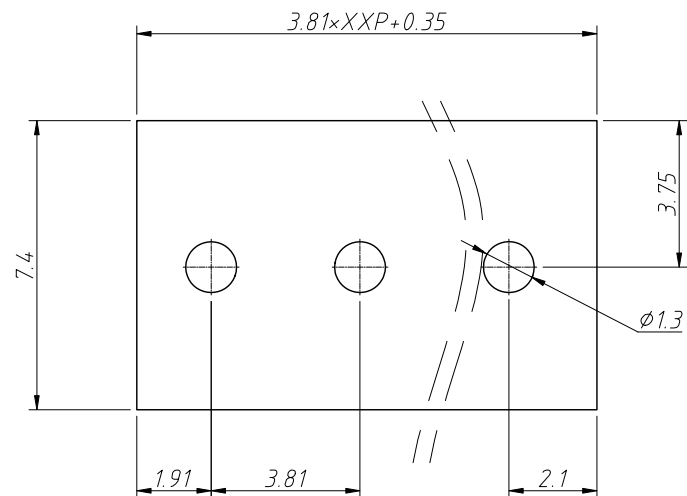


ANGLE TOLERANCE	PROJECTION	Description:			
±3°		Pitch 3.50mm Screw Fixation Terminal Block			
GENERAL TOLERANCE	UNITS	mm	KLS P/N:	L-KLS2-125-3.50-XXP-XX	
0~30	±0.50	SHEET SIZE	A4		
30~60	±0.75	Draw:	Song	2024-09-09	
60~90	±1.00	Check:	Daniel	2024-09-09	

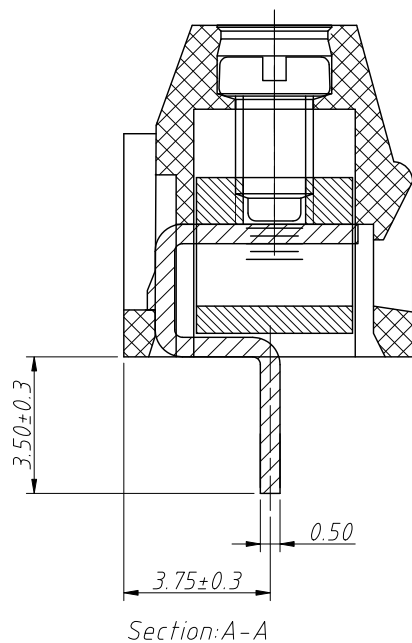
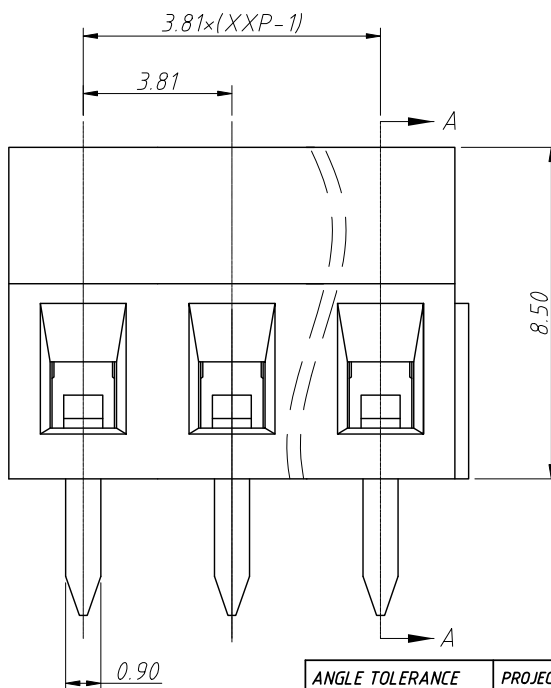
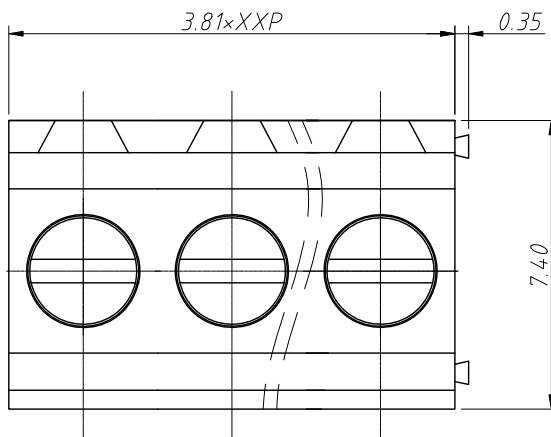
NingBo KLS ELECTRONIC CO.,LTD.

1 RoHS Compliance

REV	SYM	Revision Record	Appr.	Date
V0	KLS02006	New Version Release	Jenny	2024-11-12



PCB Layout



Section:A-A

Electrical	UL	IEC
Rated Voltage	300V	250V
Rated Current	10A	13.5A
Withstand Voltage	2000V / 1min	---
Wire Range	16~28 AWG	1.0mm <sup>2</sup>

Material and other:

Housing:PA66, UL 94 V-0

Pin Header:Brass, Tin plated

Screw/Torque:M2.0 Steel Zn Plated/0.2Nm max

Stripping Length:4-5mm

Temp. Range:-40°C ~ +105°C

Soldering:+250°C, for 5 Sec

Contact resistance:20mΩ MAX

Insulation resistance:500MΩ/DC500V

Order Information

L-KLS2-125-3.81-XXP-XX

RoHS

Terminal Block

Pitch:3.81mm

No.:Of (02~24) Pin

Color:

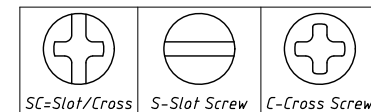
1=Gray 2=Blue 3=Black

4=Green 5=Orange 6=Red

7=Transp 8=Yellow 9=White

Screw:SC=Slot/Cross

S-Slot Screw C-Cross Screw



ANGLE TOLERANCE	PROJECTION	Description:	Pitch 3.81mm Terminal Block	
±3°				
GENERAL TOLERANCE	UNITS	mm	KLS P/N:	L-KLS2-125-3.81-XXP-XX
0~30 ±0.50	SHEET SIZE	A4		
30~60 ±0.75	Draw:	Jenny	2024-11-12	
60~90 ±1.00	Check:	Daniel	2024-11-12	

NingBo KLS ELECTRONIC CO.,L TD.