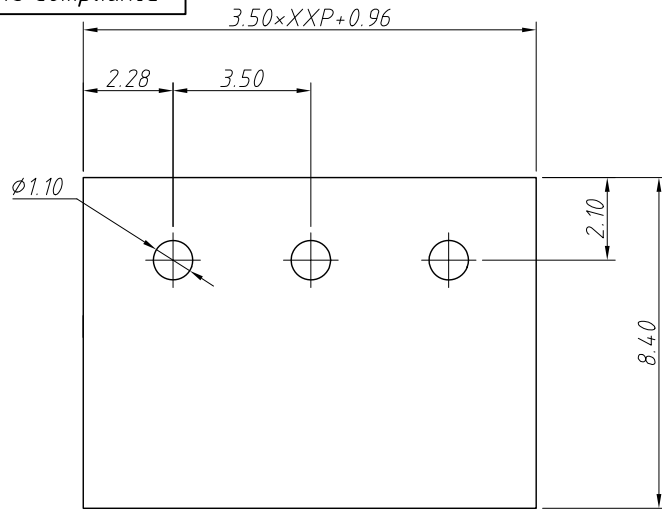
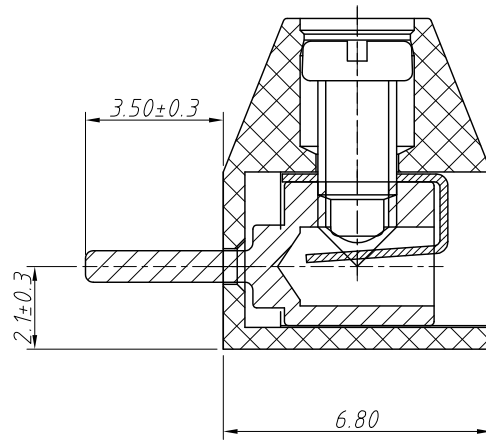


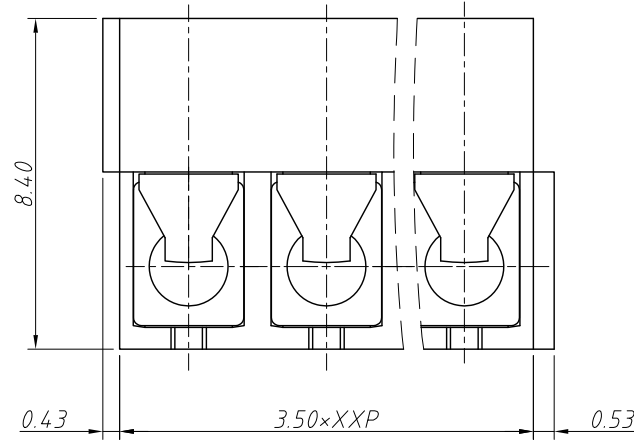
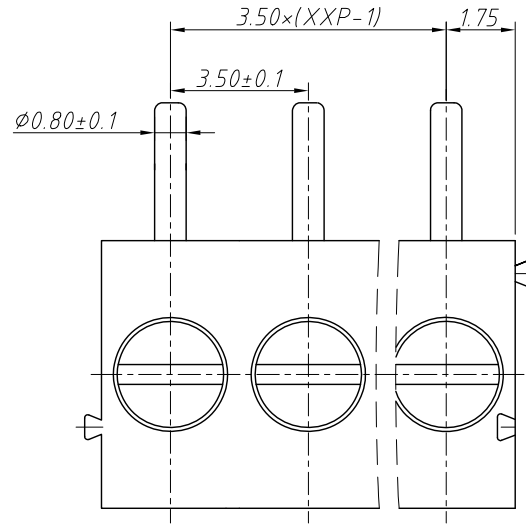
1 RoHS Compliance



Recommended PCB Layout



Material and other:
 Housing: PA66, UL 94V-0
 Pin header: Brass, Tin Plated
 Shrapnel: Phosphor Bronze, Ni Plated
 Screw/Torque: Steel, M2.0 Zn Plated / 0.2N.m Max.
 Contact resistance: 20mΩ
 Insulation resistance: 500MΩ/DC500V
 Strip Length: 4.5-5mm
 Temp. Range: -40°C ~ +105°C Max Soldering: +250°C, for 5 Sec

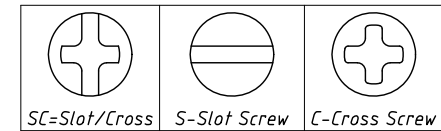
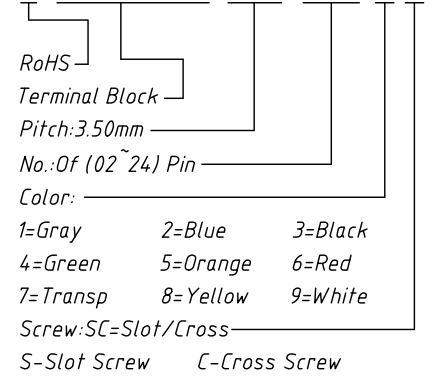


6	7	8
REV	SYM	Revision Record
V0	KLS02006	New Version Release
		Appr.
		WuHao
		Date
		2024-09-23

Electrical Characteristics	UL	IEC
Rated Voltage	125V	250V
Rated Current	10A	10A
Withstand Voltage	AC2000V / 1min	---
Wire Range	18-24 AWG	0.75mm ²

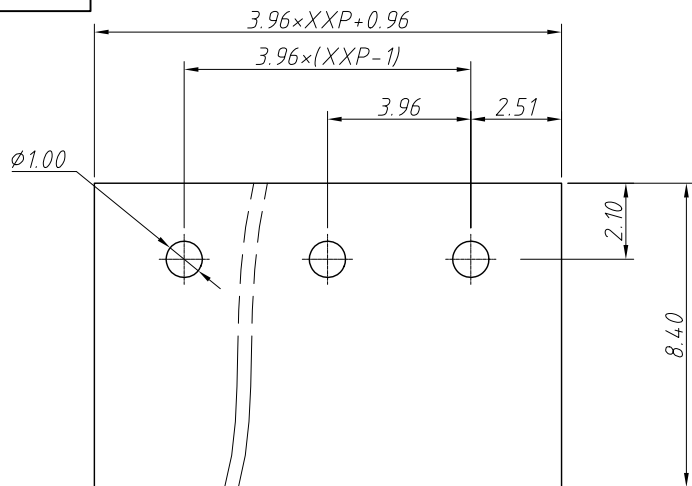
Order Information

L-KLS2-350R-3.50-XXP-X X

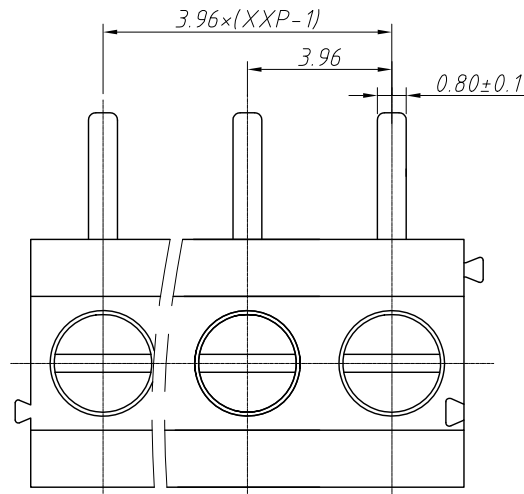


ANGLE TOLERANCE	PROJECTION	Description:
±3°		Pitch 3.50mm Screw fixation Terminal Block
GENERAL TOLERANCE	UNITS	mm
0~30 ±0.50	SHEET SIZE	A4
30~60 ±0.75	Draw:	WuHao 2024-09-23
60~90 ±1.00	Check:	Daniel 2024-09-23
		KLS NingBo KLS ELECTRONIC CO.,L TD.

1 RoHS Compliance

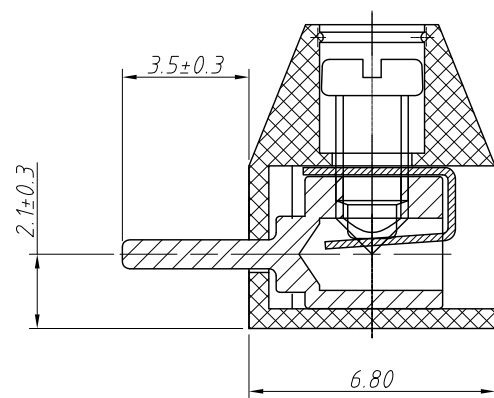


Recommended PCB Layout

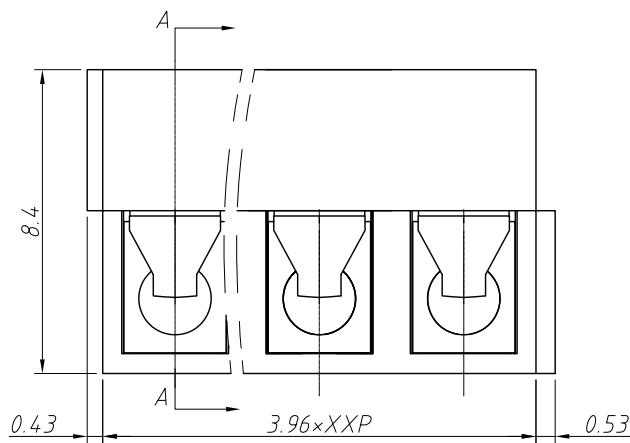


6	7	8
REV	SYM	Revision Record
V0	KLS02006	New Version Release
		Appr.
		WuHao
		Date
		2024-09-23

Electrical Characteristics	UL	IEC
Rated Voltage	300V	250V
Rated Current	10A	10A
Withstand Voltage	AC2000V / 1min	---
Wire Range	18-24 AWG	0.75mm ²



SECTION: A-A



Order Information

L-KLS2-350R-3.96-XXP-X X

RoHS

Terminal Block

Pitch: 3.96mm

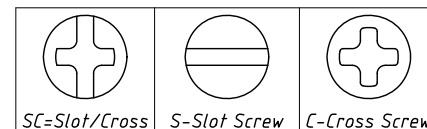
No.: Of (02~24) Pin

Color:

- 1=Gray 2=Blue 3=Black
- 4=Green 5=Orange 6=Red
- 7=Transp 8=Yellow 9=White

Screw: SC=Slot/Cross

S-Slot Screw C-Cross Screw



Material and other:

Housing: PA66, UL94V-0

Pin header: Brass, Tin Plated

Shrapnel: Phosphor Bronze, Ni Plated

Screw/Torque: Steel, M2.0 Zn Plated / 0.2N.m Max.

Contact resistance: 20mΩ

Insulation resistance: 500MΩ/DC500V

Steip Length: 4.5-5mm

Temp. Range: -40°C ~ +105°C Max Soldering: +250°C, for 5 Sec

ANGLE TOLERANCE	PROJECTION	Description:
±3°		Pitch 3.96mm Screw fixation Terminal Block
GENERAL TOLERANCE	UNITS	mm
0~30	±0.50	SHEET SIZE
30~60	±0.75	A4
60~90	±1.00	Draw: WuHao
	Check: Daniel	2024-09-23
		2024-09-23
		KLS NingBo KLS ELECTRONIC CO.,L TD.