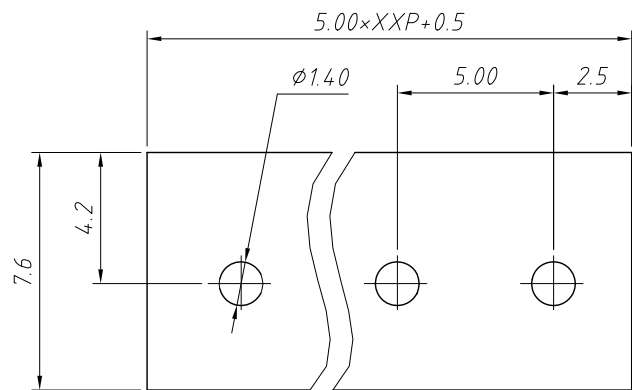
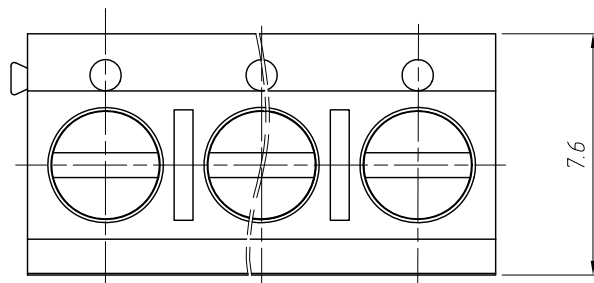


1 RoHS Compliance

REV	SYM	Revision Record	Appr.	Date
V0	KLS02006	New Version Release	WuHao	2024-11-11



Recommended PCB Layout



Electrical Characteristics	UL	IEC
Rated Voltage	250V	250V
Rated Current	16A	17.5A
Withstand Voltage	AC2000V/1min	---
Wire Range	26~14 AWG	1.5mm <sup>2</sup>

Material

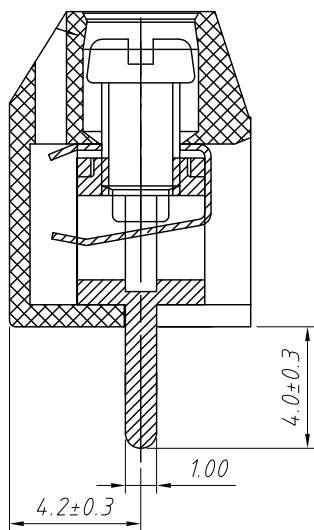
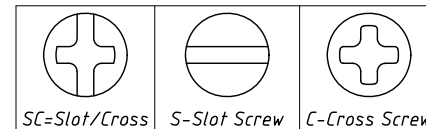
Housing:PA66,UL 94V-0 Pin Header:Brass,Tin Plated  
 Shrapnel:Phosphor Bronze,Ni Plated  
 Screw/Torque:Steel,M2.5,Zn Plated/0.4N.m Max  
 Temp.Range:-40°C ~ + 105°C Soldering:+250°C,For 5 Sec  
 Steip Length:6~7 mm  
 Contact resistance:20mΩ MAX  
 Insulation resistance:500MΩ/DC500V

Order Information

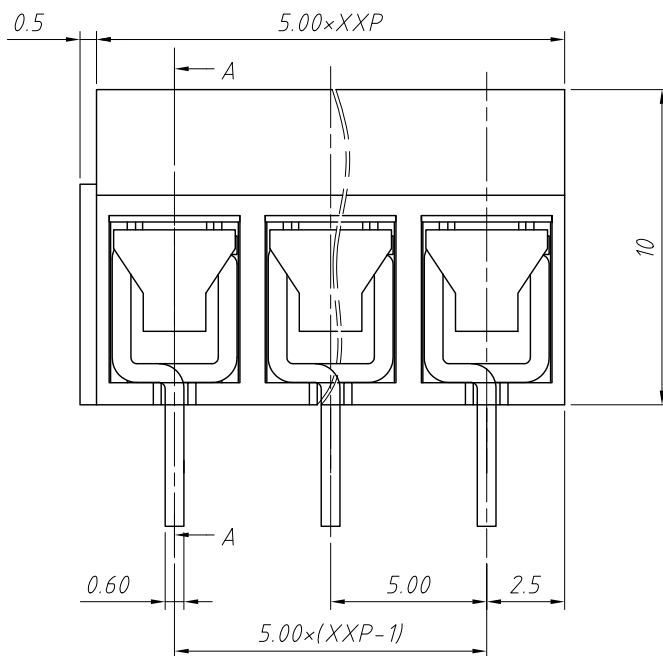
L-KLS2-306V-5.00-XXP-X X

RoHS  
 Terminal Block  
 Pitch:5.00mm  
 No.: of (02~24)Pole  
 Color:  
 1=Gray 2=Blue 3=Black  
 4=Green 5=Orange 6=Red  
 7=Transp 8=Yellow 9=White

Screw:SC=Slot/Cross  
 S-Slot Screw C-Cross Screw



SECTION A-A



ANGLE TOLERANCE	PROJECTION	Description:
±3°		Pitch 5.00mm Terminal Blocks
GENERAL TOLERANCE	UNITS	mm
x.x ±0.30	SHEET SIZE	A4
x.xx ±0.20	Draw:	WuHao 2024-11-11
x.xxx ±0.10	Check:	Daniel 2024-11-11



NingBo KLS ELECTRONIC CO.,L TD.