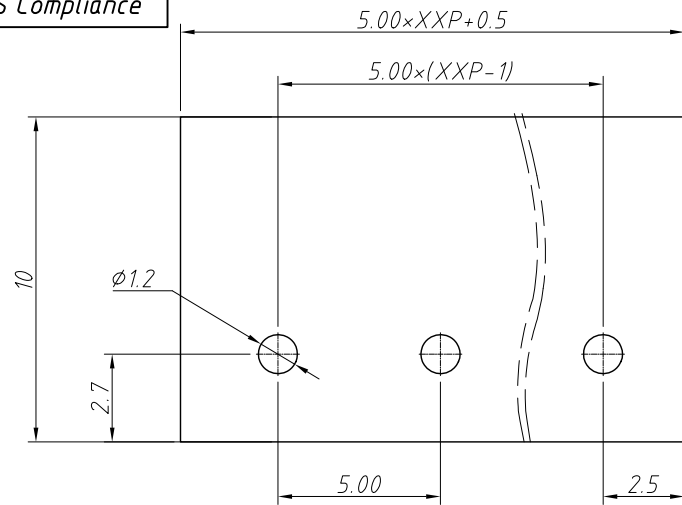
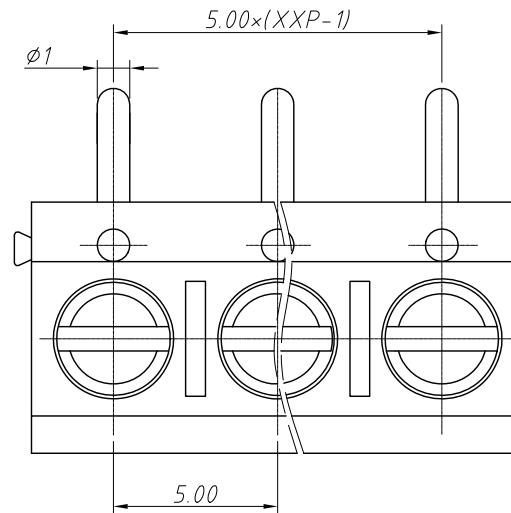


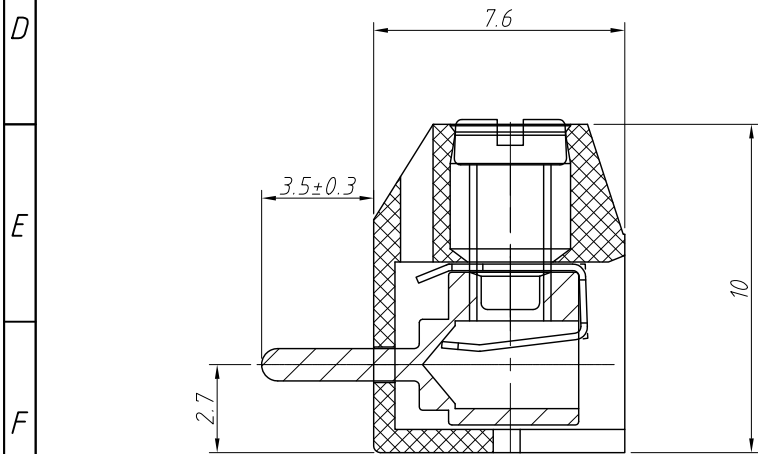
RoHS Compliance



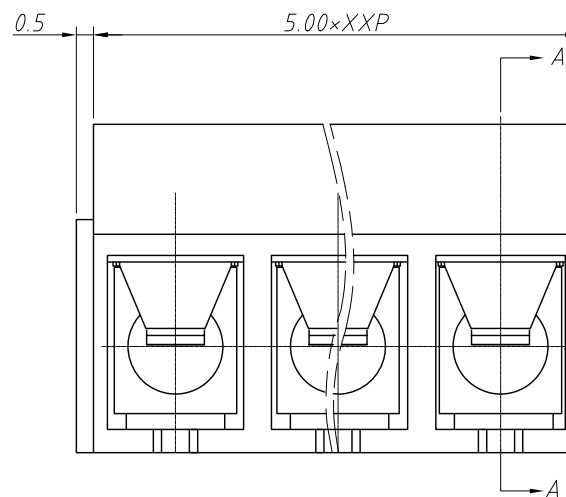
Recommended PCB Layout



REV	SYM	Revision Record	Appr.	Date
V0	KLS02006	New Version Release	WuHao	2024-09-23
Electrical Characteristics		UL	IEC	
Rated Voltage		250V	250V	
Rated Current		16A	17.5A	
Withstand Voltage		AC2000V / 1min	---	
Wire Range		14 ~ 22 AWG	1.5mm <sup>2</sup>	



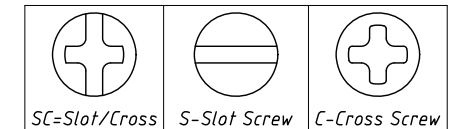
SECTION: A-A



Order Information

L-KLS2-301R-5.00-XXP-X X

RoHS Terminal Block  
Pitch: 5.00mm  
No.: Of (02 ~ 24) Pin  
Color: \_\_\_\_\_  
1=Gray 2=Blue 3=Black  
4=Green 5=Orange 6=Red  
7=Transp 8=Yellow 9=White  
Screw: SC=Slot/Cross  
S-Slot Screw C-Cross Screw



Material and other:  
Housing: PA66, UL 94V-0  
Pin header: Brass, Tin Plated  
Shrapnel: Phosphor Bronze, Ni Plated  
Screw/Torque: Steel, M2.5 Zn Plated / 0.4N.m Max.  
Contact resistance: 20mΩ  
Insulation resistance: 500MΩ/DC500V  
Steip Length: 4.5-5mm  
Temp. Range: -40°C ~ +120°C Max Soldering: +250°C, for 5 Sec

ANGLE TOLERANCE	PROJECTION	Description:		
±3°		Pitch 5.00mm Screw fixation Terminal Block		
GENERAL TOLERANCE	UNITS	mm	KLS P/N:	L-KLS2-301R-5.00-XXP-XX
0 ~ 30	±0.50	SHEET SIZE	A4	
30 ~ 60	±0.75	Draw:	WuHao	2024-09-23
60 ~ 90	±1.00	Check:	Daniel	2024-09-23



NingBo KLS ELECTRONIC CO., L TD.