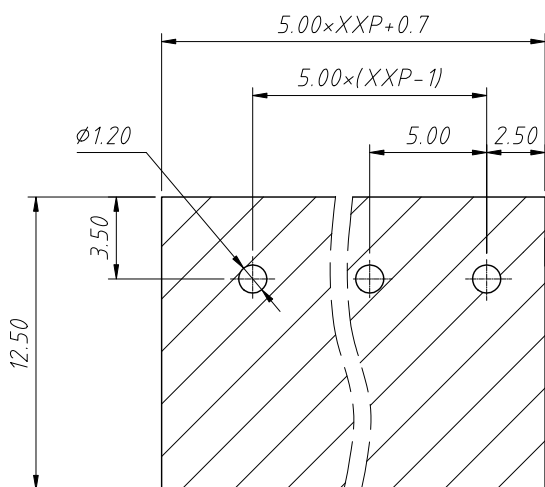
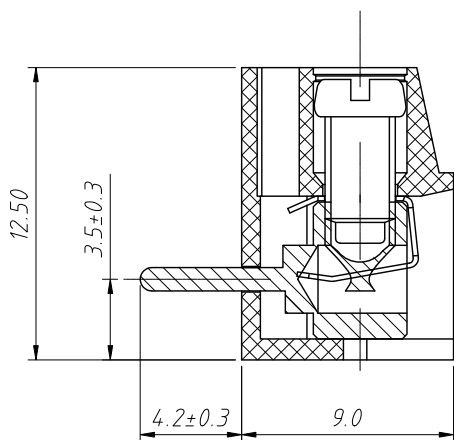
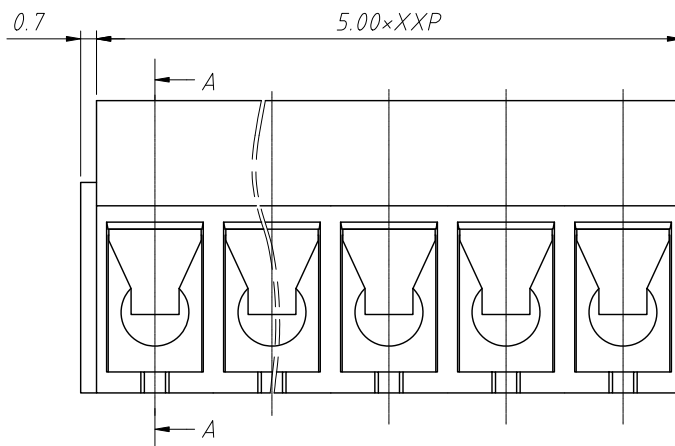
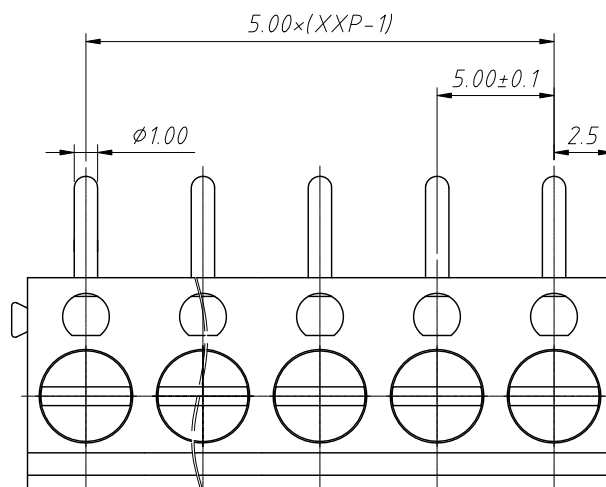


RoHS Compliance

REV	SYM	Revision Record	Appr.	Date
V0	KLS02006	New Version Release	WuHao	2024-11-11



Recommended PCB Layout



SECTION A-A

Electrical Characteristics	UL	IEC
Rated Voltage	250V	250V
Rated Current	16A	17.5A
Withstand Voltage	AC2000V/1min	---
Wire Range	22~14 AWG	1.5mm ²

Material

Housing:PA66,UL 94V-0

Pin Header:Brass,Tin plated

Shrapnel:Phosphor Bronze,Ni Plated

Screw/Torque:Steel,M3.0,Zn Plated/0.5N.m Max

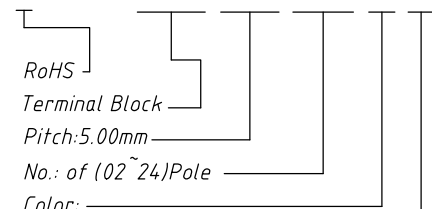
Temp. Range:-30°C ~ + 120°C

Soldering:+250°C,For 5 Sec

Steip Length:4~4.5 mm

Order Information

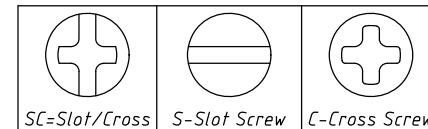
L-KLS2-300R-5.00-XXP-X X



- Color:
- 1=Gray 2=Blue 3=Black
 - 4=Green 5=Orange 6=Red
 - 7=Transp 8=Yellow 9=White

Screw:SC=Slot/Cross

S-Slot Screw C-Cross Screw



ANGLE TOLERANCE	PROJECTION	Description:
±3°		Pitch 5.00mm Terminal Blocks
GENERAL TOLERANCE	UNITS	mm
x.x ±0.30	SHEET SIZE	A4
x.xx ±0.20	Draw:	WuHao
x.xxx ±0.10	Check:	Daniel
KLS P/N:		L-KLS2-300R-5.00-XXP-XX
KLS ELECTRONIC		NingBo KLS ELECTRONIC CO.,L TD.