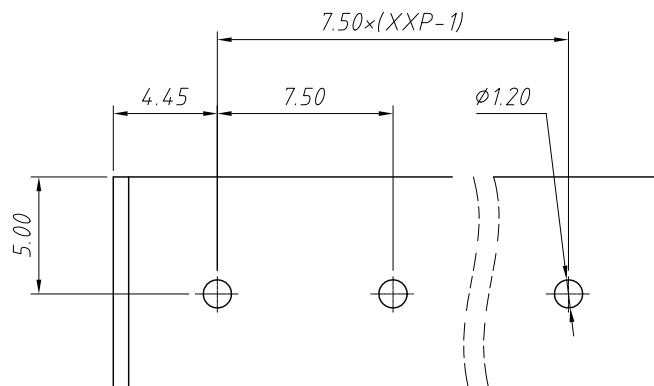
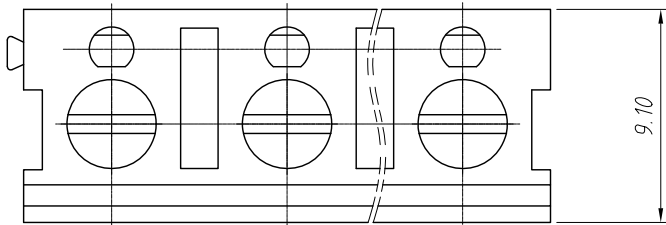


1 RoHS Compliance

REV	SYM	Revision Record	Appr.	Date
V0	KLS02006	New Version Release	WuHao	2024-11-11



Recommended PCB Layout



Electrical Characteristics	UL	IEC
Rated Voltage	250V	250V
Rated Current	16A	24A
Withstand Voltage	1500V/1 min	6.0 KV
Wire Range	22~14 AWG	0.5~2.5mm ²

Material

Housing:PA66,UL 94V-0

Pin Header:Copper Alloy,Sn plated

Screw/Torque:M3.0/0.5N.m Max

Operating temperature:-40°C ~ +105°C

Steip Length:5~6 mm

Order Information

L-KLS2-300-7.50-XXP-X X

RoHS

Terminal Block

Pitch:7.50mm

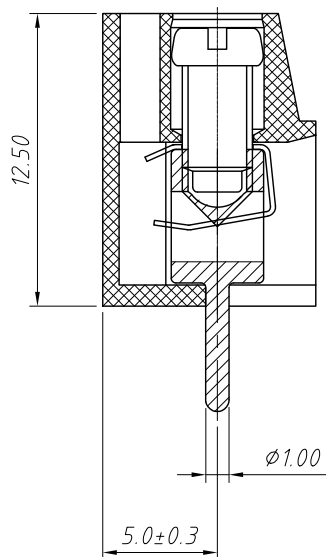
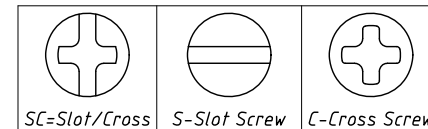
No.: of (02~24)Pole

Color:

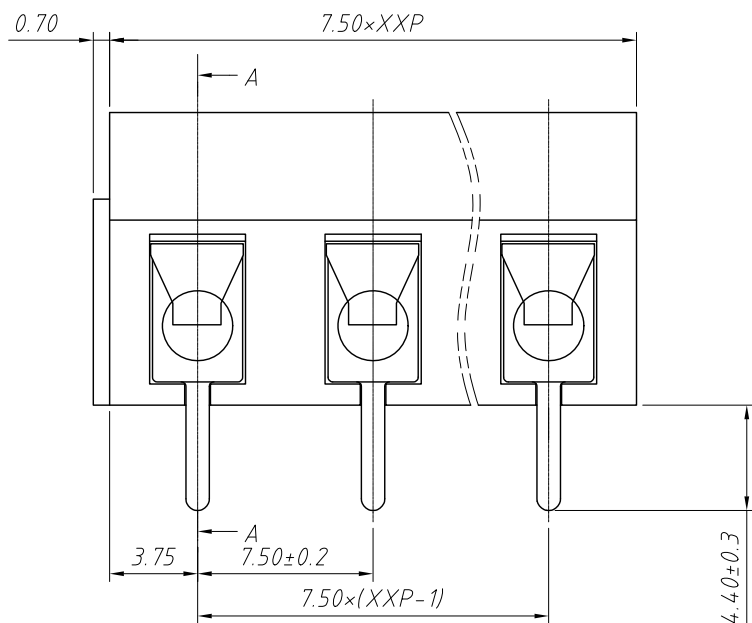
- 1=Gray 2=Blue 3=Black
- 4=Green 5=Orange 6=Red
- 7=Transp 8=Yellow 9=White

Screw:SC=Slot/Cross

S-Slot Screw C-Cross Screw



SECTION A-A



ANGLE TOLERANCE	PROJECTION	Description:
±3°		Pitch 7.50mm Terminal Blocks
GENERAL TOLERANCE	UNITS	mm
x.x ±0.30	SHEET SIZE	A4
x.xx ±0.20	Draw:	WuHao 2024-11-11
x.xxx ±0.10	Check:	Daniel 2024-11-11



NingBo KLS ELECTRONIC CO.,L TD.