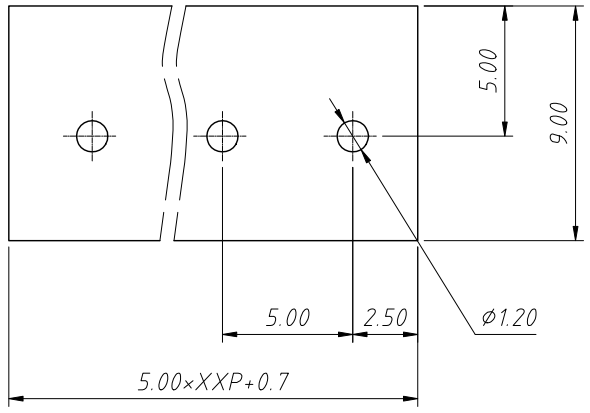
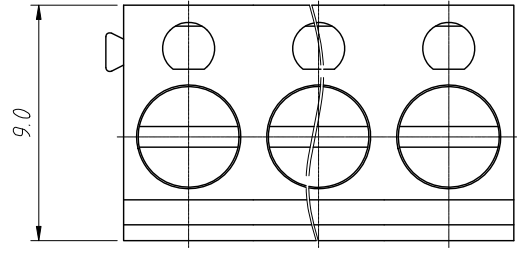


1  
RoHS Compliance

6	7	8
REV	SYM	Revision Record
V0	KLS02006	New Version Release
		Appr.
		WuHao
		Date
		2024-11-11



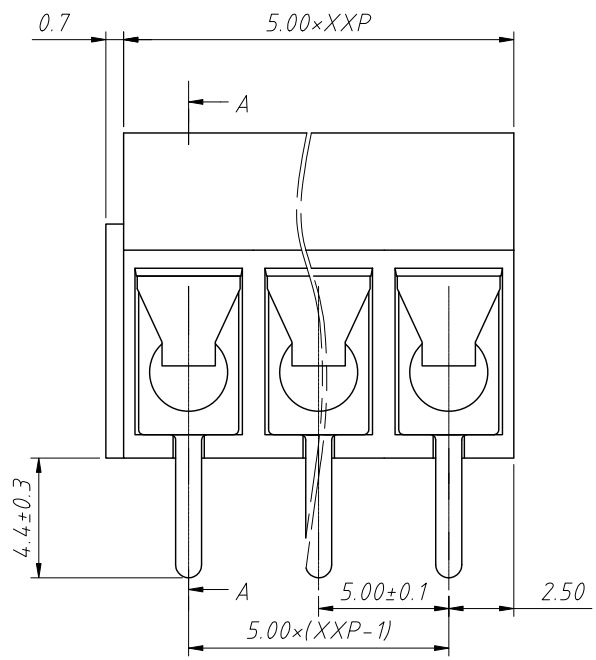
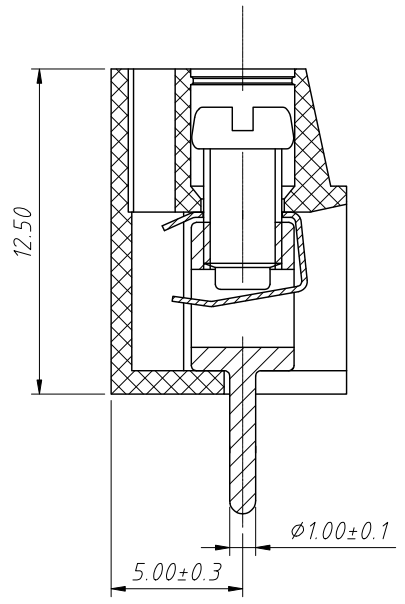
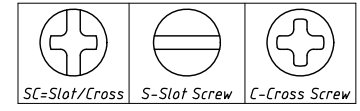
Recommended PCB Layout



Electrical	UL	IEC
Rated Voltage	250V	250V
Rated Current	16A	17.5A
Withstand Voltage	AC2000V/1min	---
Wire Range	22~14 AWG	1.5mm <sup>2</sup>

**Material**  
 Housing: PA66, UL 94V-0  
 Pin Header: Brass, Tin plated  
 Shrapnel: Phosphor Bronze, Ni Plated  
 Screw/Torque: Steel, M3.0, Zn Plated / 0.5N.m Max  
 Temp. Range: -30°C ~ 120°C / Soldering: 250°C, For 5 Sec  
 Steip Length: 4 ~ 4.5 mm  
 Contact resistance: 20mΩ  
 Insulation resistance: 500MΩ / DC500V

**Order Information**  
 L-KLS2-300-5.00-XXP-X X  
 RoHS  
 Terminal Block  
 Pitch: 5.00mm  
 No.: of (02~24) Pole  
 Color:  
 1=Gray    2=Blue    3=Black  
 4=Green    5=Orange    6=Red  
 7=Transp    8=Yellow    9=White  
 Screw: SC=Slot/Cross  
 S-Slot Screw    C-Cross Screw



ANGLE TOLERANCE	PROJECTION	Description:
±3°		Pitch 5.00mm Terminal Blocks
GENERAL TOLERANCE	UNITS	mm
x.x ±0.30	SHEET SIZE	A4
x.xx ±0.20	Draw:	WuHao 2024-11-11
x.xxx ±0.10	Check:	Daniel 2024-11-11
KLS ELECTRONIC		NingBo KLS ELECTRONIC CO.,L TD.

