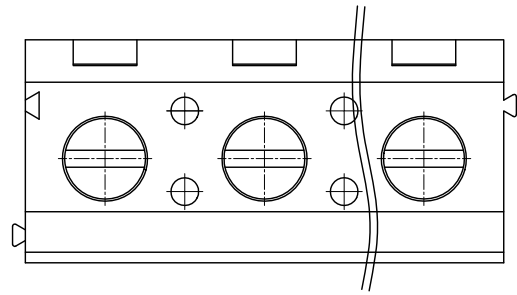
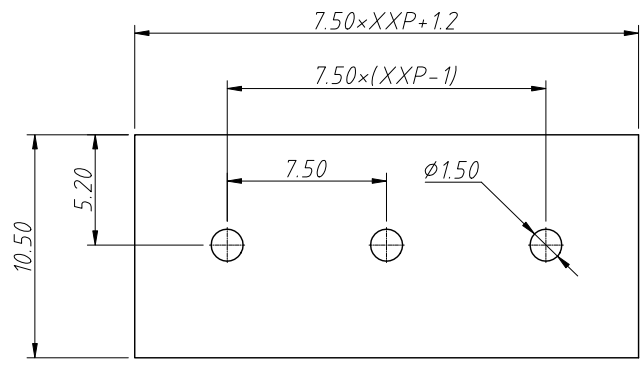


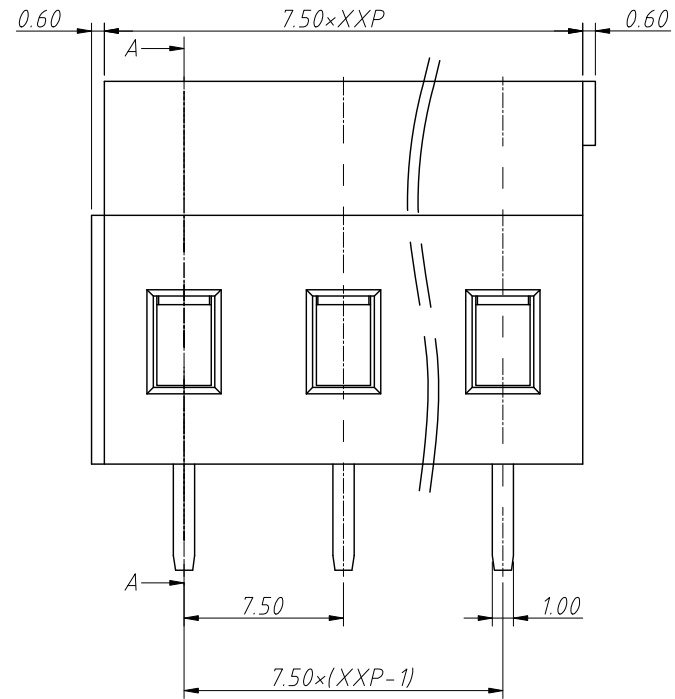
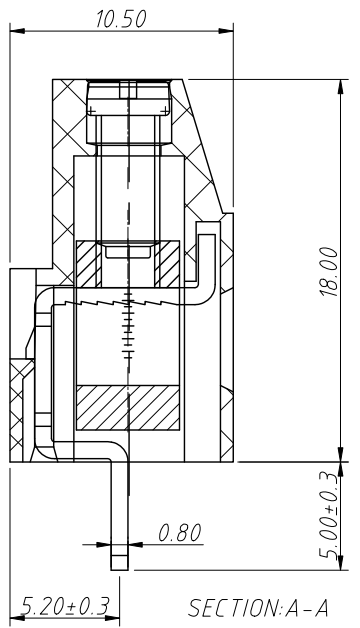
1
RoHS Compliance

6		7		8	
REV	SYM	Revision Record		Appr.	Date
V0	KLS02006	New Version Release		WuHao	2024-09-18



Recommended PCB Layout

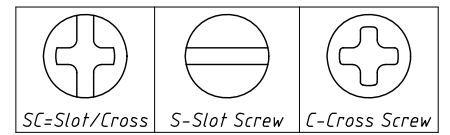
Electrical Characteristics	UL	IEC
Rated Voltage	300V	450V
Rated Current	20A	24A
Withstand Voltage	AC2000V/1 min	---
Wire Range	12~26 AWG	2.5mm ²



Order Information

L-KLS2-129-7.50-XXP-X X

- RoHS
- Terminal Block
- Pitch: 7.50mm
- No.: Of (02~24) Pin
- Color:
 - 1=Gray
 - 2=Blue
 - 3=Black
 - 4=Green
 - 5=Orange
 - 6=Red
 - 7=Transp
 - 8=Yellow
 - 9=White
- Screw: SC=Slot/Cross
- S-Slot Screw C-Cross Screw

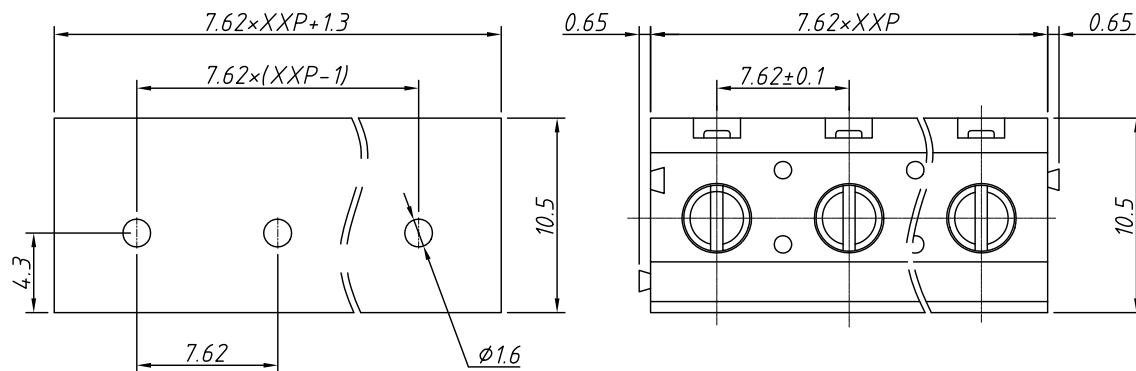


Material and other:
 Housing: PA66, UL94V-0
 Pin header: Brass Tin Plated / Cage: Brass Ni Plated
 Screw/Torque: M3.0, Steel Zn plated/0.5N.m Max.
 Contact resistance: 20mΩ
 Insulation resistance: 500MΩ/DC500V
 Temp. Range: -40°C ~ +105°C / Max Soldering: +250°C, for 5 Sec

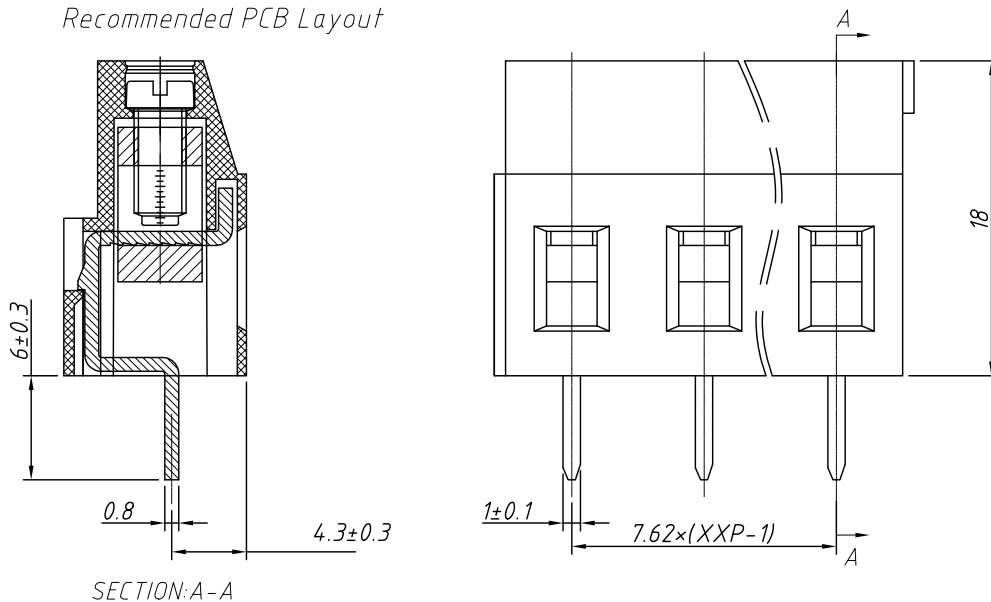
ANGLE TOLERANCE	PROJECTION	Description:			
±3°		Pitch 7.50mm Screw fixation Terminal Block			
GENERAL TOLERANCE	UNITS	mm	KLS P/N:	L-KLS2-129-7.50-XXP-XX	
0°~30° ±0.50	SHEET SIZE	A4			
30°~60° ±0.75	Draw:	WuHao	2024-09-18	NingBo KLS ELECTRONIC CO.,L TD.	
60°~90° ±1.00	Check:	Daniel	2024-09-18		

1 RoHS Compliance

REV	SYM	Revision Record	Appr.	Date
V0	KLS02006	New Version Release	WuHao	2024-09-18



Recommended PCB Layout



SECTION: A-A

Material and other:

Housing: PA66, UL 94 V-0

Pin header: Brass, Sn Plated Wire Guard: Brass, Ni Plated

Screw/Torque: Steel, M3 Zn Plated / 0.5N.m Max.

Contact resistance: 20mΩ

Insulation resistance: 500MΩ/DC500V

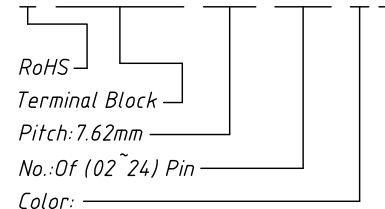
Steip Length: 6-7mm

Temp. Range: -40°C ~ +105°C Max Soldering: +250°C, for 5 Sec

Electrical Characteristics	UL	IEC
Rated Voltage	300V	450V
Rated Current	16A	24A
Withstand Voltage	AC2000V / 1min	---
Wire Range	12~26 AWG	2.5mm ²

Order Information

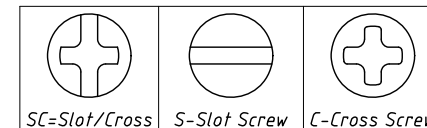
L-KLS2-129-7.62-XXP-X X



- Color:
- 1=Gray 2=Blue 3=Black
 - 4=Green 5=Orange 6=Red
 - 7=Transp 8=Yellow 9=White

Screw: SC=Slot/Cross

S-Slot Screw C-Cross Screw



ANGLE TOLERANCE	PROJECTION	Description:
±3°		Pitch 7.62mm Screw fixation Terminal Block
GENERAL TOLERANCE	UNITS	mm
0°~30° ±0.50	SHEET SIZE	A4
30°~60° ±0.75	Draw:	WuHao 2024-09-18
60°~90° ±1.00	Check:	Daniel 2024-09-18
		L-KLS2-129-7.62-XXP-XX
		NingBo KLS ELECTRONIC CO.,L TD.