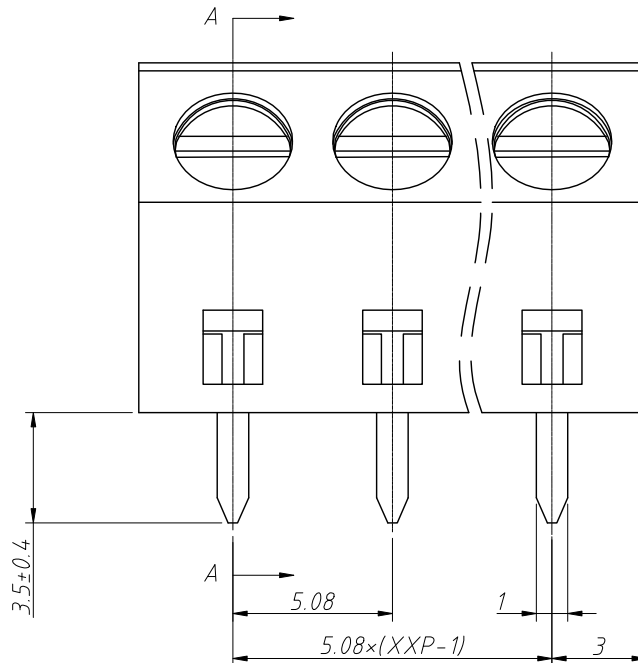
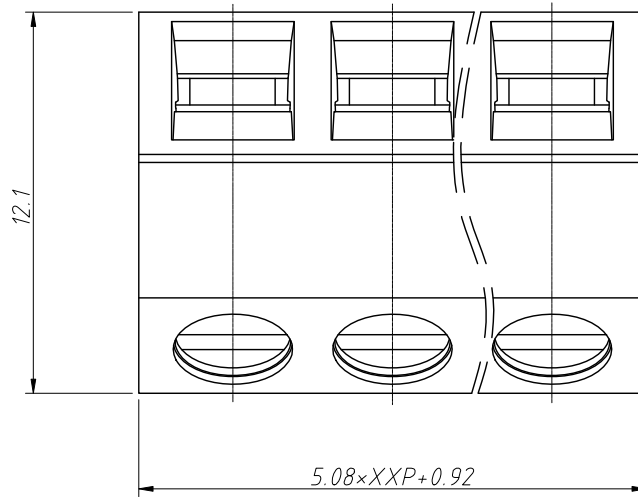
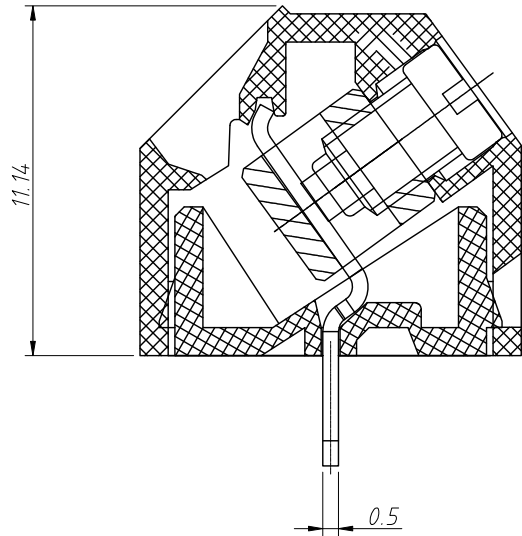
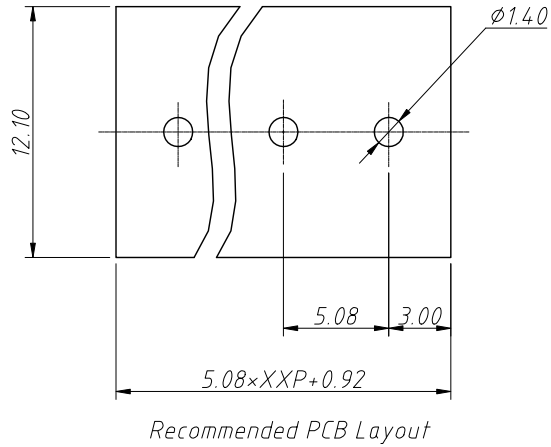


1 RoHS Compliance



6	7	8		
REV	SYM	Revision Record	Appr.	Date
V0	KLS02006	New Version Release	Song	2024-09-09

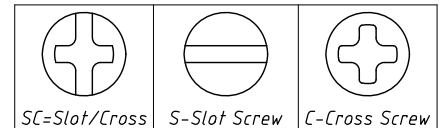
Electrical Characteristics	UL	IEC
Rated Voltage	300V	250V
Rated Current	12A	17.5A
Withstand Voltage	AC2000V/1 min	---
Wire Range	26 ~ 14 AWG	1.5mm <sup>2</sup>

Material and other:  
 Housing: PA66, UL94V-0  
 Screw/Torque: Steel, M3/Zn Plated/0.5N.m  
 Pin: Brass, Tin Plated  
 Cage: Brass, Ni Plated  
 Contact Resistance: 20mΩ Max  
 Insulation Resistance: 500MΩ/DC500V Min  
 Stripping Length: 6 ~ 7mm  
 Temp. Range: -40°C ~ +105°C  
 MAX Soldering: 250°C For 5S

Order Information

L-KLS2-107-5.08-XXP-X X

RoHS  
 Terminal Block  
 Pitch: 5.08mm  
 No.: Of (02 ~ 24) Pin  
 Color: 1=Gray 2=Blue 3=Black  
 4=Green 5=Orange 6=Red  
 7=Transp 8=Yellow 9=White  
 Screw: SC=Slot/Cross  
 S-Slot Screw C-Cross Screw



ANGLE TOLERANCE	PROJECTION	Description:		
±3°		Pitch 5.08mm Screw Fixation Terminal Block		
GENERAL TOLERANCE	UNITS	mm	KLS P/N:	L-KLS2-107-5.08-XXP-XX
0 ~ 30	±0.50	SHEET SIZE	A4	
30 ~ 60	±0.75	Draw:	Song	2024-09-09
60 ~ 90	±1.00	Check:	Daniel	2024-09-09



NingBo KLS ELECTRONIC CO.,LTD.