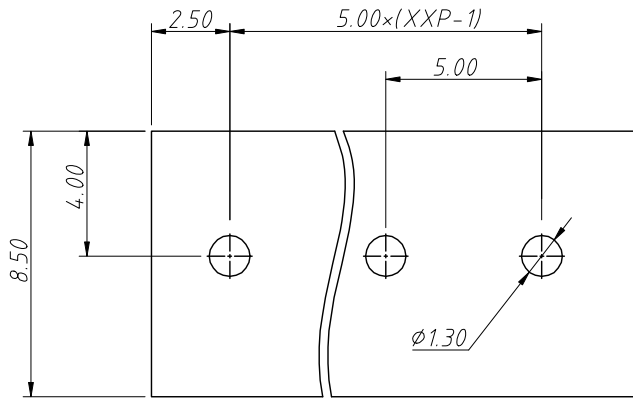
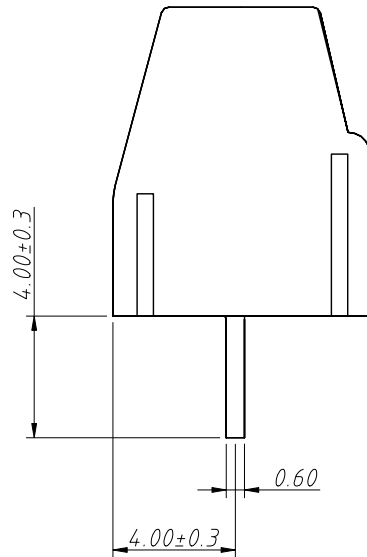
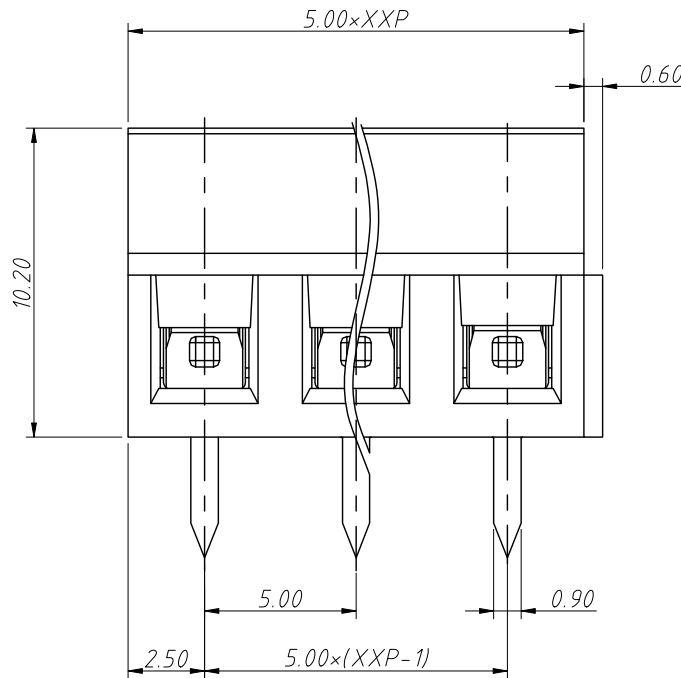
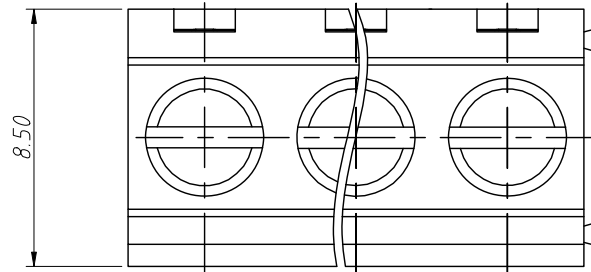


1 RoHS Compliance

REV	SYM	Revision Record	Appr.	Date
V0	KLS02006	New Version Release	Song	2024-11-12



Recommended PCB Layout



Electrical Characteristics	UL	IEC
Rated Voltage	300V	250V
Rated Current	12A	17.5A
Withstand Voltage	1600V/1min	4.0KV
Wire Range	26~14 AWG	0.5~1.5 mm ²

Material and other:
 Housing: PA66, UL94V-0
 Pin Header: Copper Alloy, Sn Plated
 Cage: Copper Alloy, Ni Plated
 Screw/Torque: Steel, Zn Plated, M2.5/0.4N.m
 Stripping Length: 5~6mm
 Operating Temperature: -40°C ~ +105°C
 Soldering Temperature: 260°C /5S

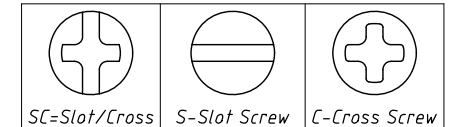
Order Information

L-KLS2-127-5.00-XXP-X X 01

RoHS
 Terminal Block
 Pitch: 5.00mm
 No.: Of (02~24) Pin
 Color:

- 1=Gray 2=Blue 3=Black
- 4=Green 5=Orange 6=Red
- 7=Transp 8=Yellow 9=White

Screw: SC=Slot/Cross
 S-Slot Screw C-Cross Screw



Product Code: 00~99

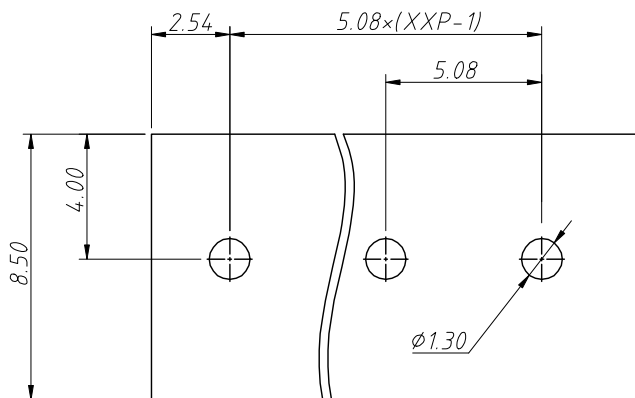
ANGLE TOLERANCE	PROJECTION	Description:
±3°		Pitch 5.00mm Terminal Block
GENERAL TOLERANCE	UNITS	mm
0~30 ±0.50	SHEET SIZE	A4
30~60 ±0.75	Draw:	Song
60~90 ±1.00	Check:	Daniel
		KLS P/N: L-KLS2-127-5.00-XXP-XXXX



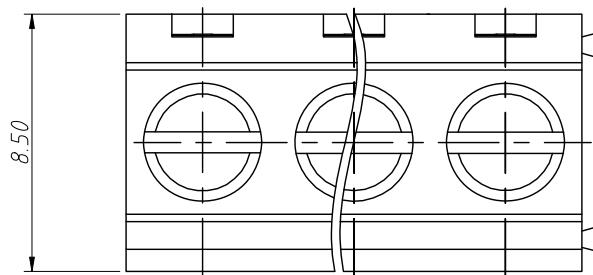
NingBo KLS ELECTRONIC CO.,LTD.

1 RoHS Compliance

REV	SYM	Revision Record	Appr.	Date
V0	KLS02006	New Version Release	Song	2024-11-12



Recommended PCB Layout

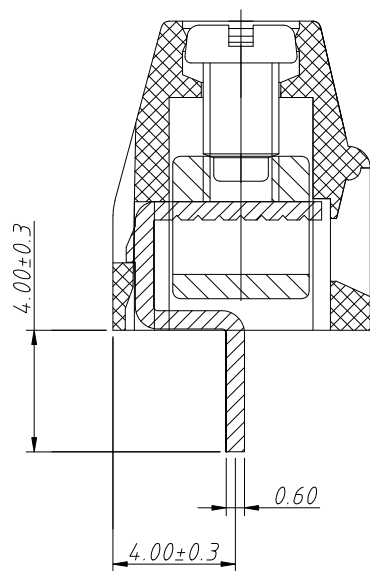
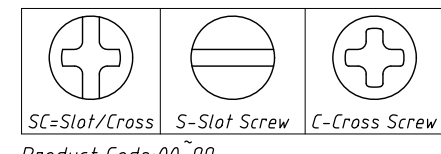
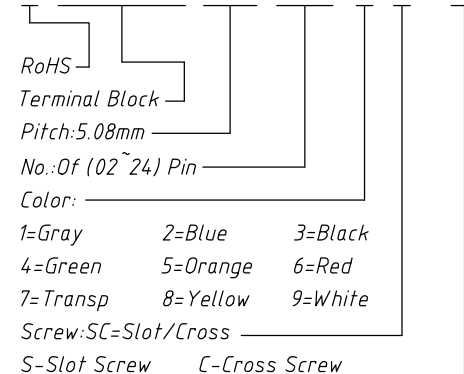


Electrical Characteristics	UL	IEC
Rated Voltage	300V	250V
Rated Current	12A	17.5A
Withstand Voltage	1600V/1 min	4.0 KV
Wire Range	26~14 AWG	0.5~1.5 mm ²

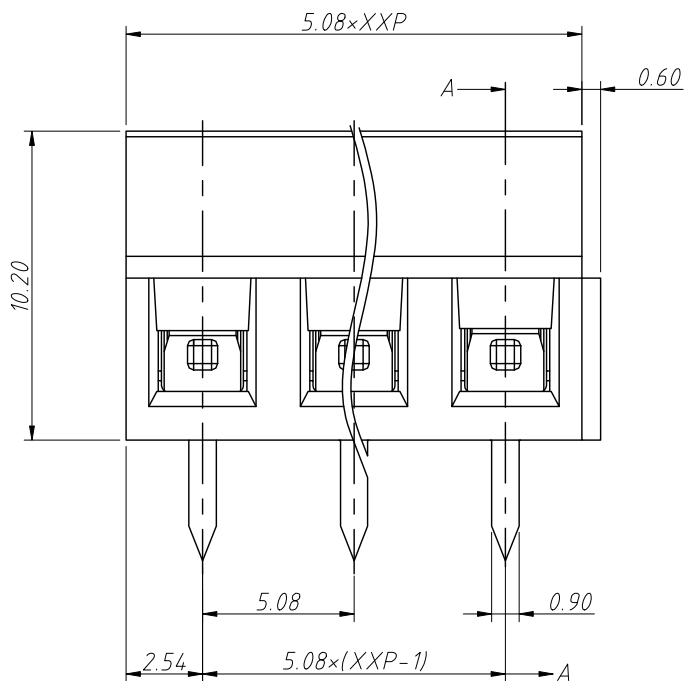
Material and other:
 Housing:PA66, UL94V-0
 Pin Header:Copper Alloy,Sn Plated
 Screw/Torque:M2.5/0.4N.m
 Stripping Length:5~6mm
 Operating Temperature:-40°C ~ +105°C

Order Information

L-KLS2-127-5.08-XXP-X X 01



SECTION A-A



ANGLE TOLERANCE	PROJECTION	Description:	Pitch 5.08mm Terminal Block	
±3°				
GENERAL TOLERANCE	UNITS	mm	KLS P/N:	L-KLS2-127-5.08-XXP-XXXX
0~30 ±0.50	SHEET SIZE	A4		
30~60 ±0.75	Draw:	Song	2024-11-12	
60~90 ±1.00	Check:	Daniel	2024-11-12	