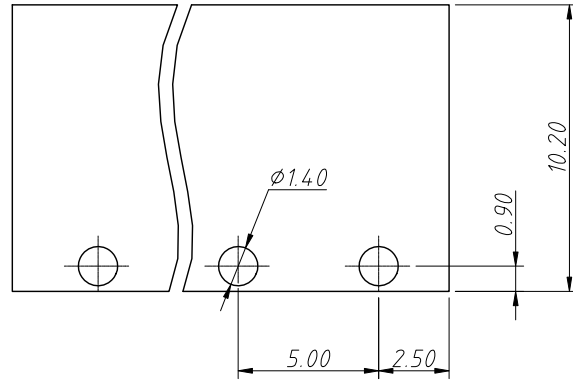
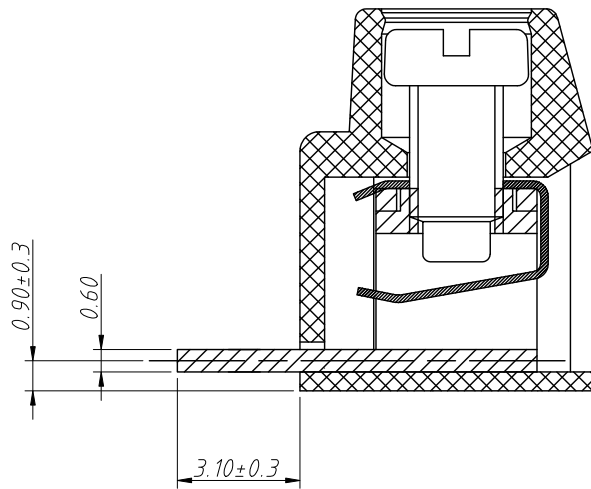
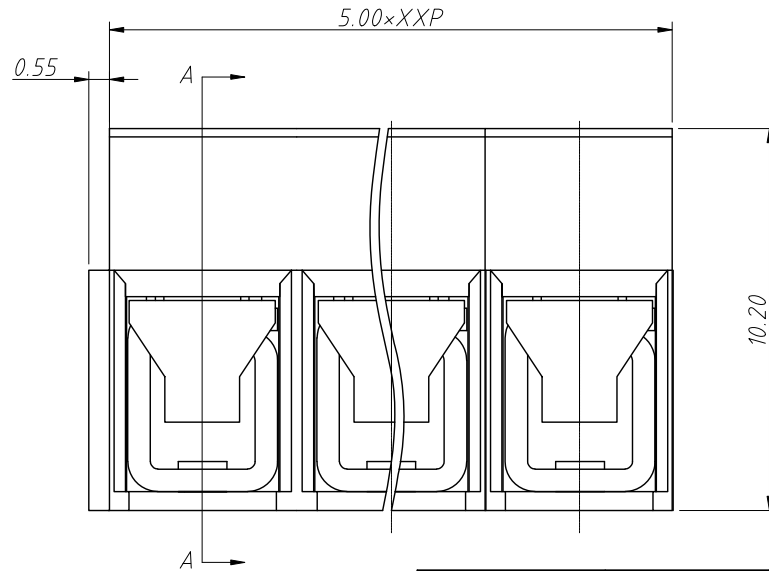
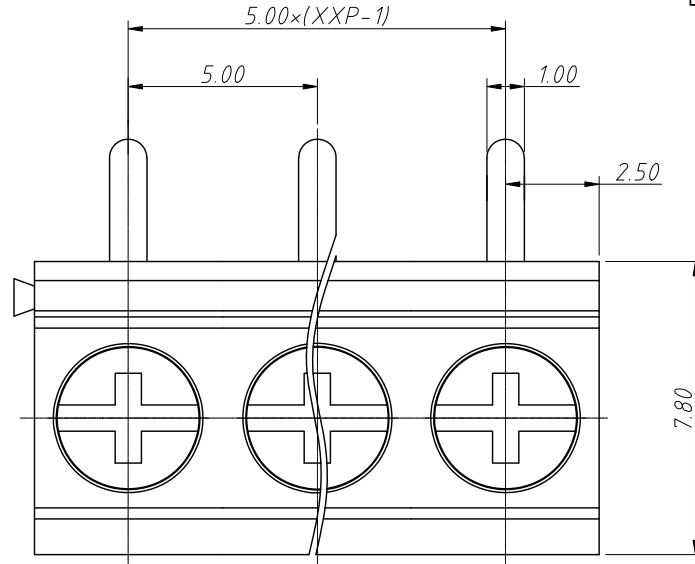


1 RoHS Compliance

REV	SYM	Revision Record	Appr.	Date
V0	KLS02006	New Version Release	Song	2024-09-09



Recommended PCB Layout



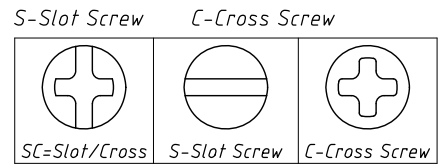
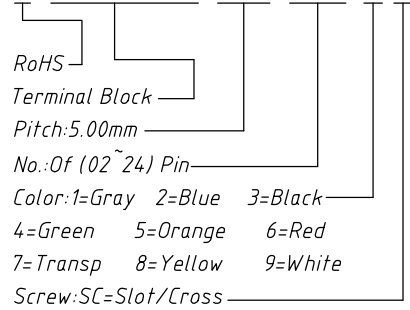
SECTION A-A

Electrical Characteristics	UL	IEC
Rated Voltage	300V	250V
Rated Current	8A	18A
Withstand Voltage	1600V/1min	4.0KV
Wire Range	26~14 AWG	0.5~2.5mm ²

Material and other:
 Housing:PA66, UL94V-0
 Pin Header:Coppo Alloy, Sn Plated
 Screw/Torque:M2.5/0.25N.m
 Stripping Length:6~7mm
 Operating Temperature:-40°C~+105°C

Order Information

L-KLS2-126R-5.00-XXP-X X



ANGLE TOLERANCE	PROJECTION	Description:
±3°		Pitch 5.00mm Screw Fixation Terminal Block
GENERAL TOLERANCE	UNITS	mm
0~30	±0.50	KLS P/N:
30~60	±0.75	L-KLS2-126R-5.00-XXP-XX
60~90	±1.00	Draw: Song
	Check: Daniel	2024-09-09



NingBo KLS ELECTRONIC CO.,LTD.