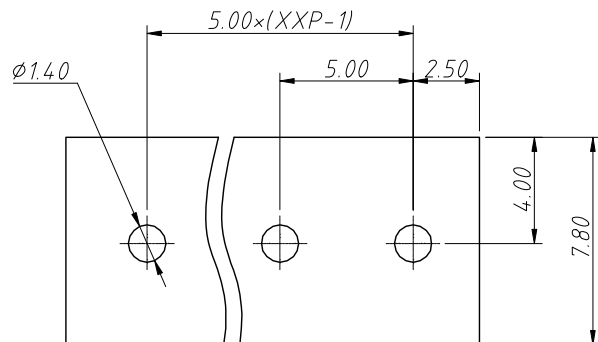
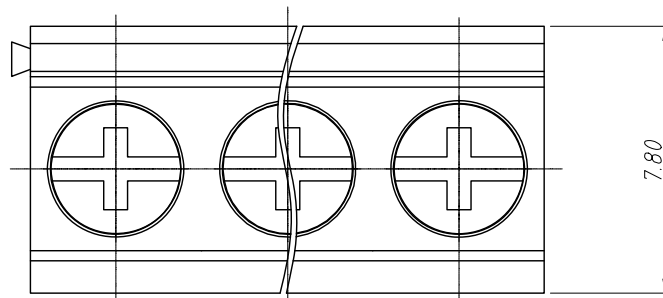


1 RoHS Compliance

REV	SYM	Revision Record	Appr.	Date
V0	KLS02006	New Version Release	Song	2024-09-09



Recommended PCB Layout



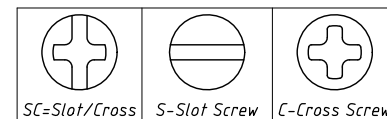
Electrical Characteristics	UL	IEC
Rated Voltage	300V	250V
Rated Current	8A	18A
Withstand Voltage	1600V/1min	4.0KV
Wire Range	26~14 AWG	0.5~2.5mm ²

Material and other:
 Housing:PA66, UL94V-0
 Pin Header:Coppy Alloy,Sn Plated
 Spring:Stainless Steel
 Screw/Torque:Steel,M2.5,Zn Plated/0.25N.m
 Stripping Length:6~7mm
 Operating Temperature:-40°C~+105°C
 Soldering:260°C For 5S Max

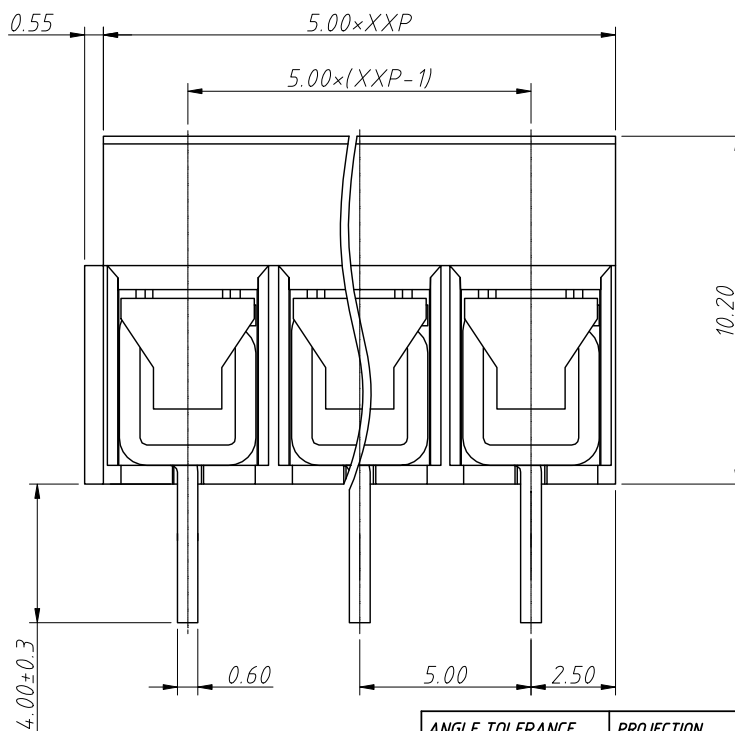
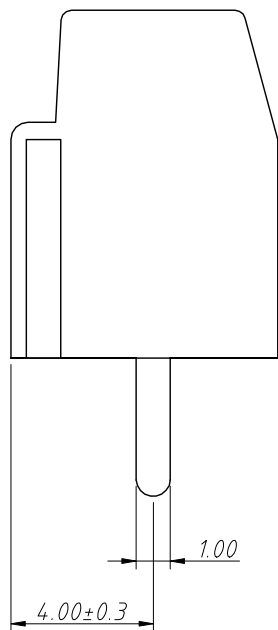
Order Information

L-KLS2-126-5.00-XXP-X X XX

RoHS
 Terminal Block
 Pitch:5.00mm
 No.:Of (02~24) Pin
 Color:1=Gray 2=Blue 3=Black
 4=Green 5=Orange 6=Red
 7=Transp 8=Yellow 9=White
 Screw:SC=Slot/Cross
 S-Slot Screw C-Cross Screw



Product Code:00~99



ANGLE TOLERANCE	PROJECTION	Description:
$\pm 3^\circ$		Pitch 5.00mm Screw Fixation Terminal Block
GENERAL TOLERANCE	UNITS	mm
0~30	± 0.50	KLS P/N:
30~60	± 0.75	SHEET SIZE
60~90	± 1.00	Draw: Song
	Check: Daniel	2024-09-09
		2024-09-09



NingBo KLS ELECTRONIC CO.,L TD.