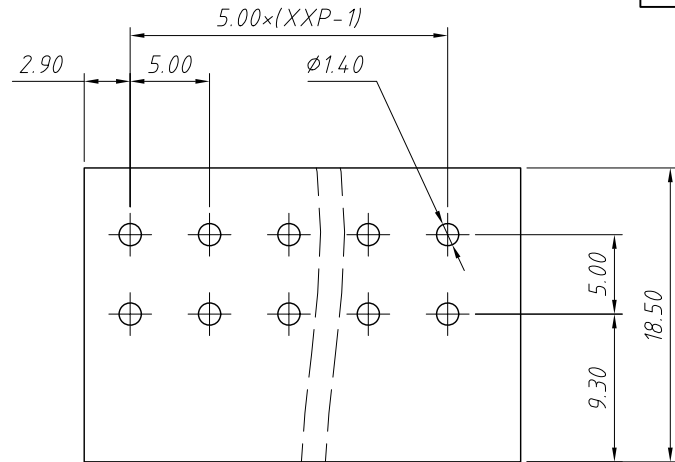
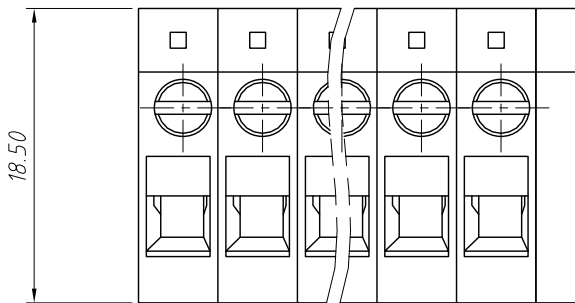


1
RoHS Compliance

REV	SYM	Revision Record	Appr.	Date
V0	KLS02006	New Version Release	WuHao	2024-11-13

B



Recommended PCB Layout

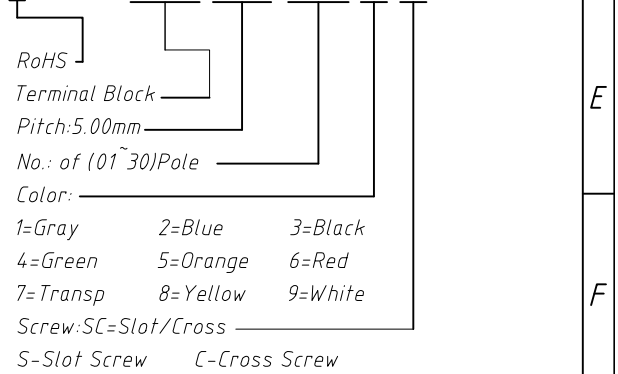
Electrical Characteristics	UL	IEC
Rated Voltage	300V	250V
Rated Current	20A	24A
Withstand Voltage	1600V/1 min	4.0 KV
Wire Range	26~12 AWG	0.5~2.5mm ²

Material
 Housing: PA66, UL94V-0
 Pin Header: Copper alloy, Sn plated
 Screw/Torque: M2.5/0.4N.m Max
 Stripping Length: 12~13 mm
 Operating Temperature: -40°C ~ +105°C
 Soldering Temperature: +260°C, For 5 Sec

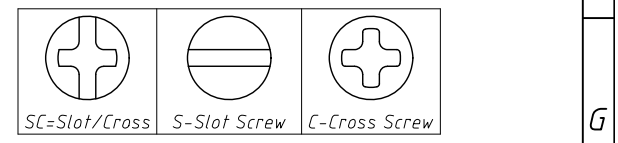
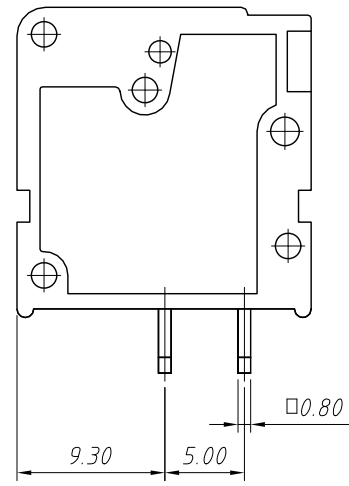
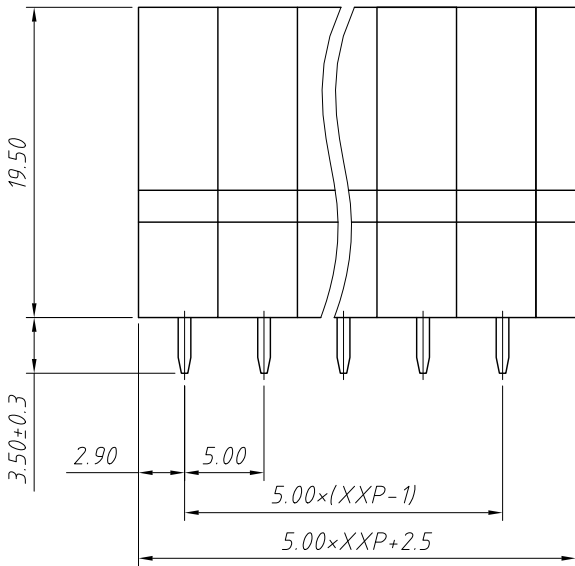
D

Order Information

L-KLS2-146V-5.00-XXP-X X



E



F

ANGLE TOLERANCE	PROJECTION	Description:
±3°		Pitch 5.00mm Terminal Blocks
GENERAL TOLERANCE	UNITS	mm
x.x ±0.30	SHEET SIZE	A4
x.xx ±0.20	Draw:	WuHao 2024-11-13
x.xxx ±0.10	Check:	Daniel 2024-11-13

NingBo KLS ELECTRONIC CO.,L TD.

H