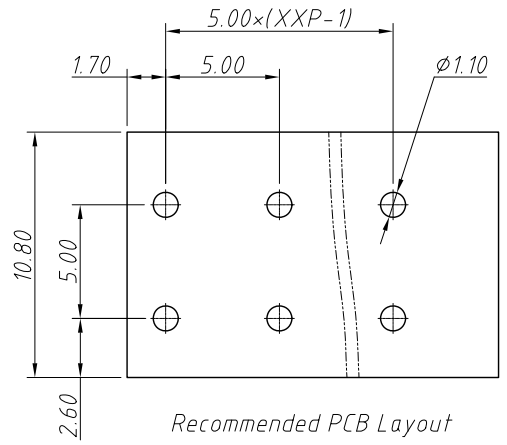
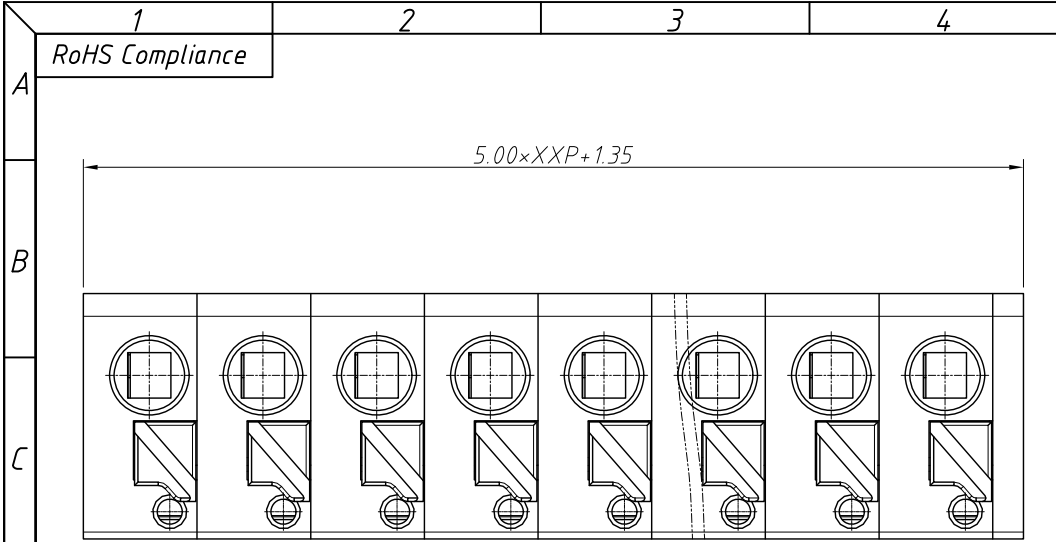
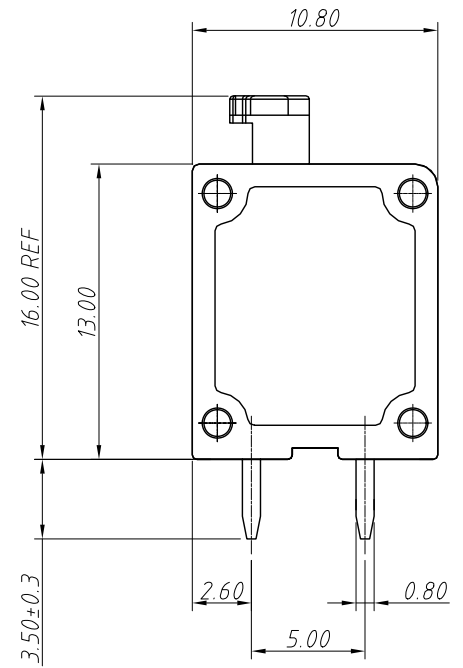
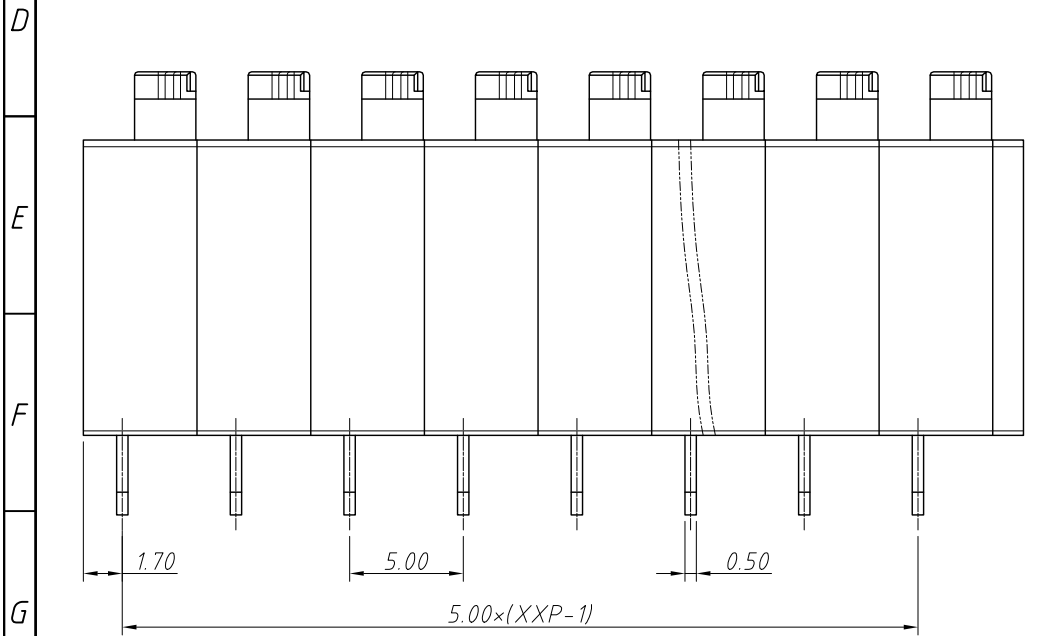


1
RoHS Compliance

REV	SYM	Revision Record	Appr.	Date
V0	KLS02006	New Version Release	Song	2024-08-28



Electrical Characteristics	UL	IEC
Rated Voltage	300V	320V
Rated Current	10A	10A
Withstand Voltage	1600V/1 min	4.0KV
Wire Range	20 ~ 16AWG	0.5 ~ 1.5mm ²



Material and other:
 Housing: PA66, UL 94V-0
 Pin Header: Copsy Alloy, Sn Plated
 Stripping Length: 8-9mm
 Operating Temperature: -40°C ~ +105°C
 Soldering Temperature: 260°C For 5S

Order Information
 L-KLS2-236-5.00-XXP-X

RoHS
 Terminal Block
 Pitch: 5.00mm
 No. of (01~24) Pins
 Color: 1=Gray 2=Blue 3=Black
 4=Green 5=Orange 6=Red
 7=Transp 8=Yellow 9=White

ANGLE TOLERANCE	PROJECTION	Description:
$\pm 3^\circ$		5.00mm Spring Terminal Blocks
GENERAL TOLERANCE	UNITS	mm
0 ~ 30	± 0.50	KLS P/N:
30 ~ 60	± 0.75	SHEET SIZE
60 ~ 90	± 1.00	A4
	Draw:	Song
	Check:	Daniel
		2024-08-28
		2024-08-28

