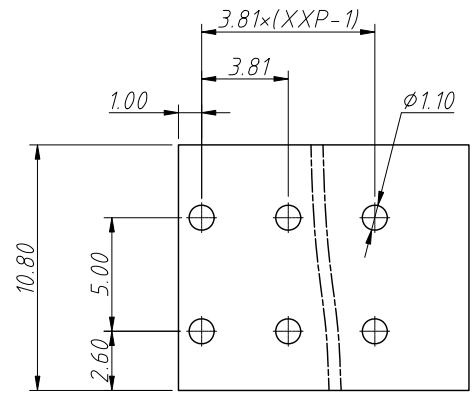
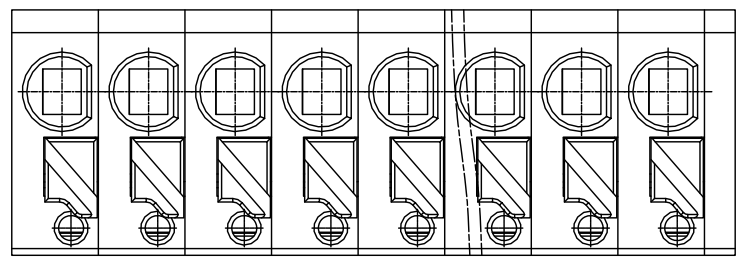


1  
RoHS Compliance

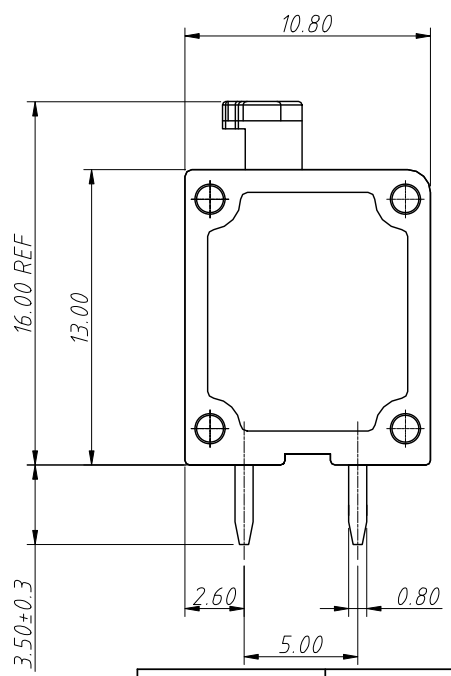
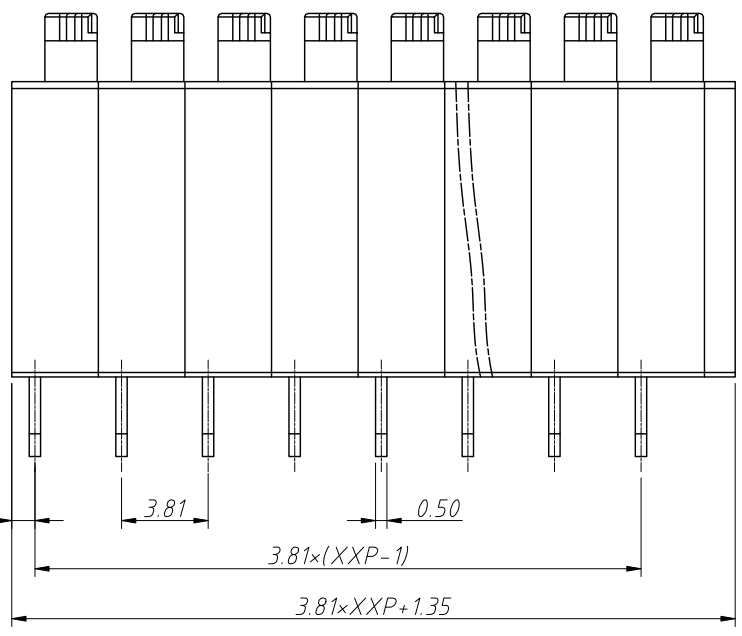
6	7	8
REV	SYM	Revision Record
V0	KLS02006	New Version Release
		Appr. Song
		Date 2024-08-28

Electrical Characteristics	UL	IEC
Rated Voltage	300V	250V
Rated Current	10A	10A
Withstand Voltage	1600V/1 min	4.0KV
Wire Range	20~16AWG	0.5~1.5mm <sup>2</sup>



Recommended PCB Layout

Material and other:  
 Housing: PA66, UL 94V-0  
 Pin Header: Coppy Alloy, Sn Plated  
 Stripping Length: 8-9mm  
 Operating Temperature: -40°C ~ +105°C



Order Information  
 L-KLS2-236-3.81-XXP-X  
 RoHS  
 Terminal Block  
 Pitch: 3.81mm  
 No.: Of Pins (01~24)  
 Color: 1=Gray 2=Blue 3=Black  
 4=Green 5=Orange 6=Red  
 7=Transp 8=Yellow 9=White

ANGLE TOLERANCE	PROJECTION	Description:
±3°		3.81mm Spring Terminal Blocks
GENERAL TOLERANCE	UNITS	mm
0~30	±0.50	KLS P/N:
30~60	±0.75	SHEET SIZE
60~90	±1.00	A4
	Draw:	Song
	Check:	Daniel
		2024-08-28
		2024-08-28

