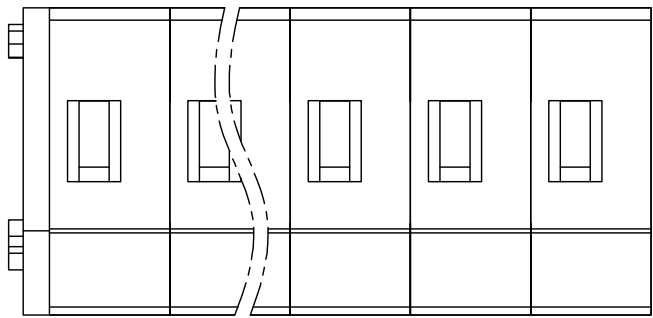
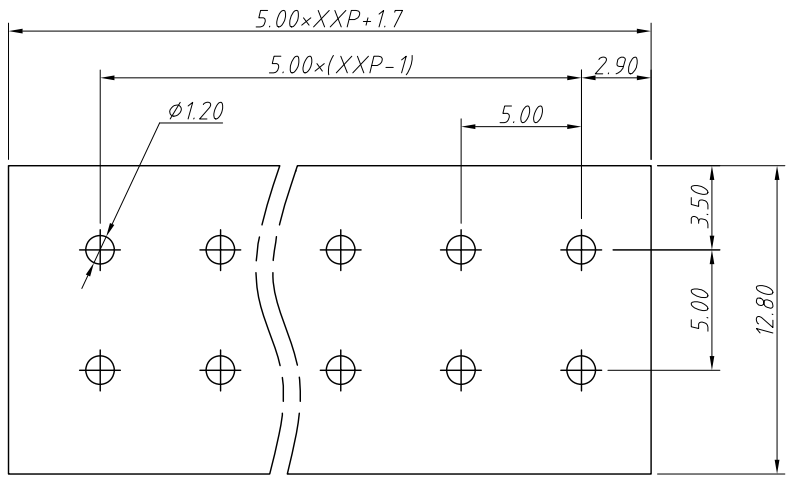


1
RoHS Compliance

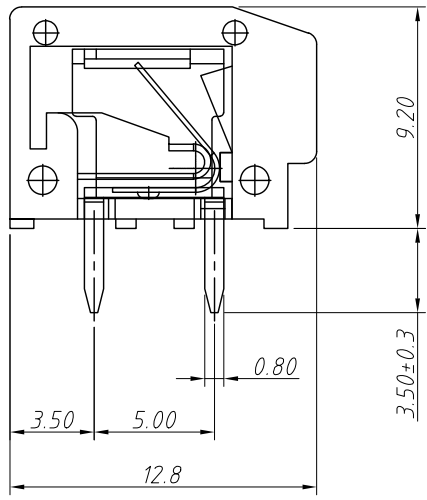
6		7		8	
REV	SYM	Revision Record		Appr.	Date
V0	KLS02006	New Version Release		Song	2024-08-28



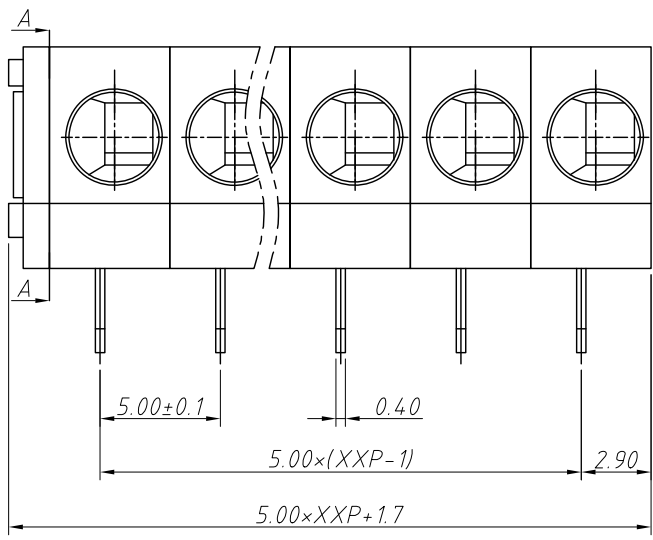
Recommended PCB Layout

Electrical Characteristics	UL	IEC
Rated Voltage	300V	320V
Rated Current	10A	17.5A
Withstand Voltage	AC2000V/1 min	---
Wire Range	22 ~ 16AWG	1.5mm ²

Material and other:
 Housing: PA66, UL 94 V-0
 Pin Header: Copsy Alloy, Sn Plated
 Wire Guard: Stainless Steel
 Contact Resistance: 20mΩ Max
 Insulation Resistance: 500MΩ/DC500V Min
 Stripping Length: 9-10mm
 Temp. Range: -40°C ~ +105°C
 MAX Soldering: 250°C For 5S



SECTION A-A



Order Information
 L-KLS2-235W-5.00-XXP-X

RoHS
 Terminal Block
 Pitch: 5.00mm
 No.: Of (01~30) Pins
 Color: 1=Gray 2=Blue 3=Black
 4=Green 5=Orange 6=Red
 7=Transp 8=Yellow 9=White

ANGLE TOLERANCE	PROJECTION	Description:			
±3°		5.00mm Spring Terminal Blocks			
GENERAL TOLERANCE	UNITS	mm	KLS P/N:	L-KLS2-235W-5.00-XXP-X	
0°~30° ±0.50	SHEET SIZE	A4			
30°~60° ±0.75	Draw:	Song	2024-08-28	NingBo KLS ELECTRONIC CO.,L TD.	
60°~90° ±1.00	Check:	Daniel	2024-08-28		