

RoHS Compliance

REV	SYM	Revision Record	Appr.	Date
V0	KLS02006	New Version Release	Song	2024-08-27

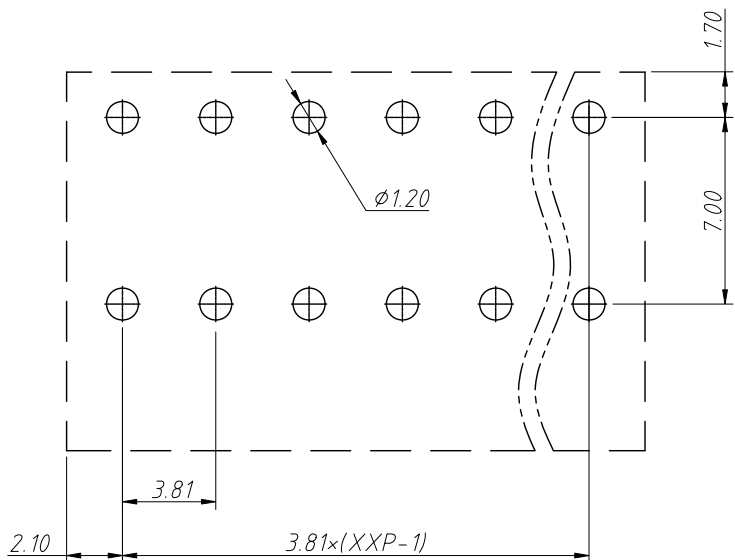
Electrical Characteristics	UL	IEC
Rated Voltage	300V	250V
Rated Current	10A	17.5A
Withstand Voltage	1600V / 1min	4.0KV
Wire Range	24 ~ 16 AWG	0.2 ~ 1.5mm ²

Material and other:
 Housing: LCP, UL94V-0
 Pin: Copper Alloy, Sn Plated
 Stripping Length: 7 ~ 8mm
 Operating Temperature: -40°C ~ +130°C
 Soldering Temperature: 285°C / 10S

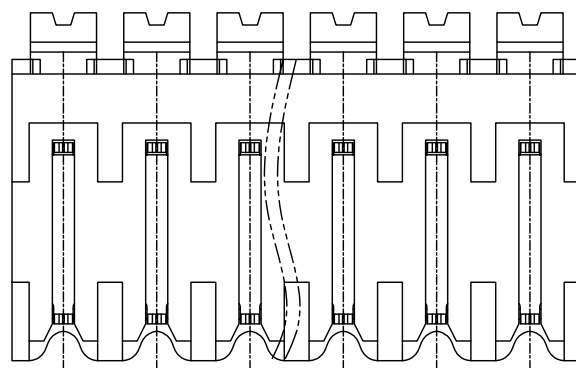
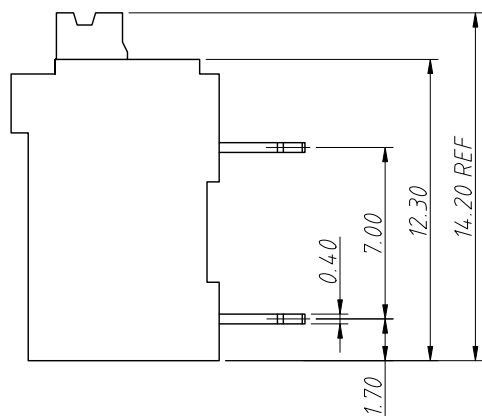
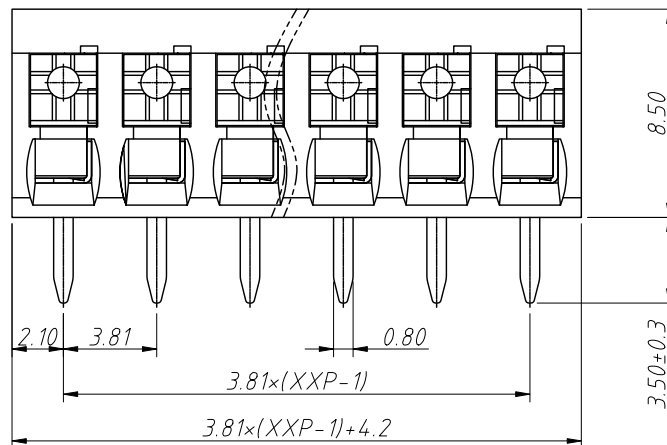
Order Information

L-KLS2-212R-3.81-XXP-X

RoHS
 Terminal Block
 Pitch: 3.81mm
 No.: Of Pins (02 ~ 24)
 Color:
 1=Gray 2=Blue 3=Black
 4=Green 5=Orange 6=Red
 7=Transp 8=Yellow 9=White



Recommended PCB Layout



ANGLE TOLERANCE	PROJECTION	Description:		
±3°		3.81mm Spring Terminal Block		
GENERAL TOLERANCE	UNITS	mm	KLS P/N:	L-KLS2-212R-3.81-XXP-X
0°~30° ±0.50	SHEET SIZE	A4	Draw:	Song 2024-08-27
30°~60° ±0.75	Check:	Daniel	2024-08-27	NingBo KLS ELECTRONIC CO.,L TD.
60°~90° ±1.00				