

1  
RoHS Compliance

2  
XXP 02P 01P

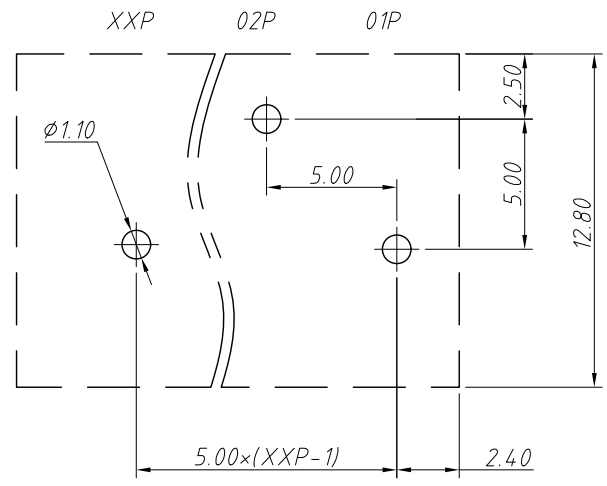
3

4

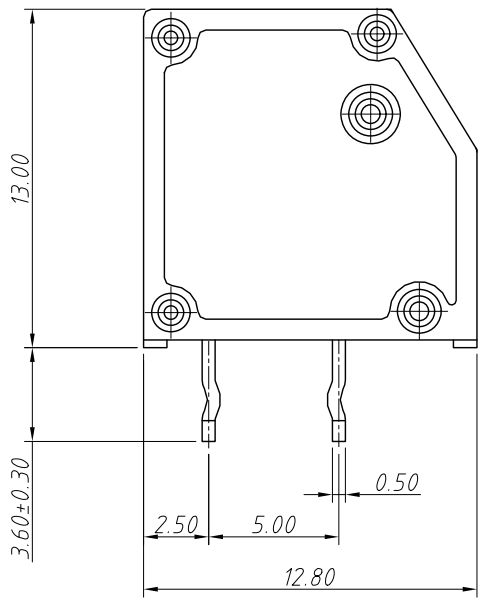
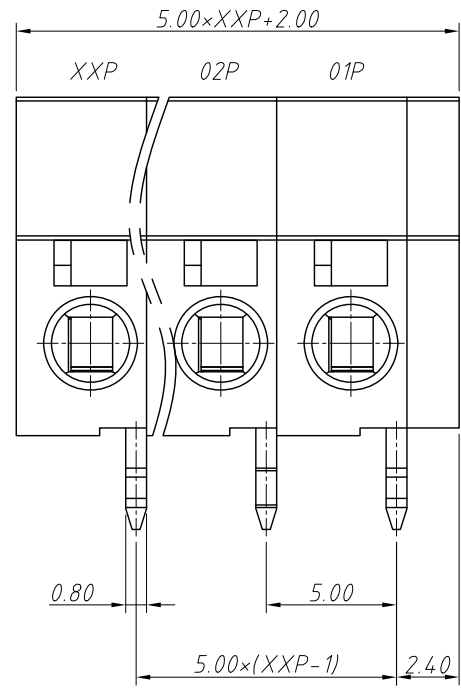
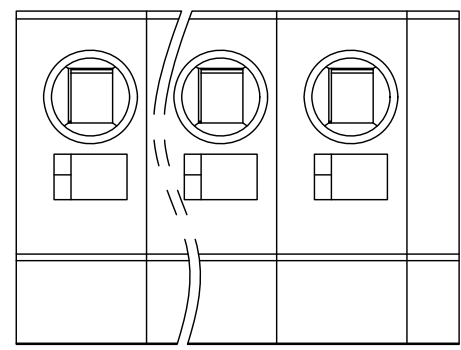
5

6

7  
REV SYM Revision Record Appr. Date  
V0 KLS02006 New Version Release Song 2024-08-28



Recommended PCB Layout



Electrical Characteristics	UL	IEC
Rated Voltage	300V	320V
Rated Current	8A	17.5A
Withstand Voltage	1600V/1 min	4.0KV
Wire Range	20~16AWG	0.2~1.5mm <sup>2</sup>

Material and other:  
 Housing:PA66,UL 94V-0  
 Pin Header:Coppo Alloy,Sn Plated  
 Stripping Length:7~8mm  
 Operating Temperature:-40°C ~ +105°C

Order Information  
 L-KLS2-240-5.00-XXP-X

Pitch:5.00mm  
 No.:Of (02~24) Pins  
 Color:1=Gray 2=Blue 3=Black  
 4=Green 5=Orange 6=Red  
 7=Transp 8=Yellow 9=White

ANGLE TOLERANCE	PROJECTION	Description:
±3°		5.00mm Spring Terminal Blocks
GENERAL TOLERANCE	UNITS	mm
0~30 ±0.50	SHEET SIZE	A4
30~60 ±0.75	Draw:	Song 2024-08-28
60~90 ±1.00	Check:	Daniel 2024-08-28
		KLS NingBo KLS ELECTRONIC CO.,L TD.