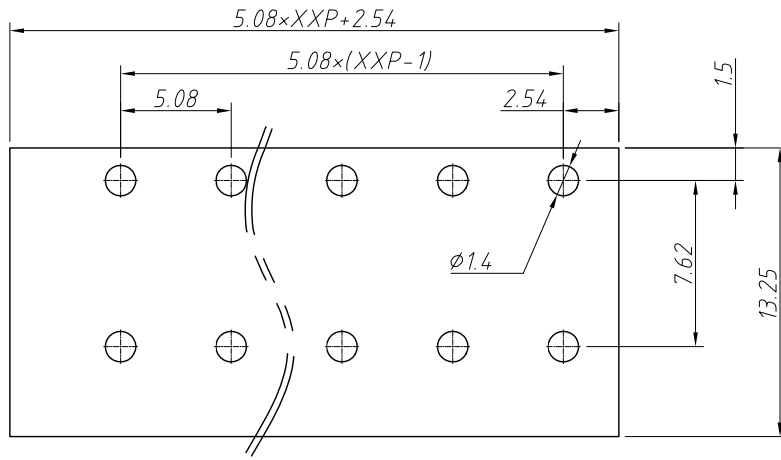
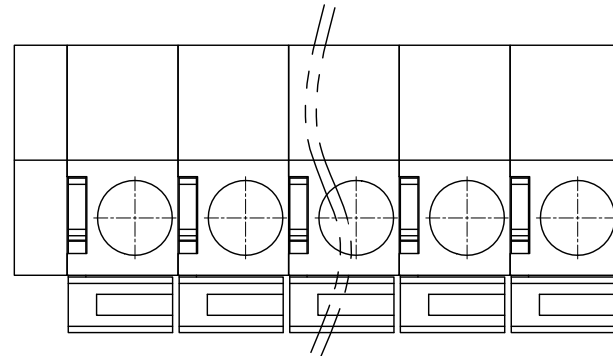


RoHS Compliance

REV	SYM	Revision Record	Appr.	Date
V0	KLS02006	New Version Release	Song	2024-08-20



Recommended PCB Layout



Electrical Characteristics	UL	IEC
Rated Voltage	300V	250V
Rated Current	10A	15A
Withstand Voltage	AC2000V/1 min	---
Wire Range	24 ~ 14 AWG	1.5mm ²

Material and other:

Housing: PA66, UL94V-0

Pin Header: Brass, Tin Plated

Wire Guard: Stainless Steel

Contact Resistance: 20mΩ

Insulation Resistance: 500MΩ/DC500V

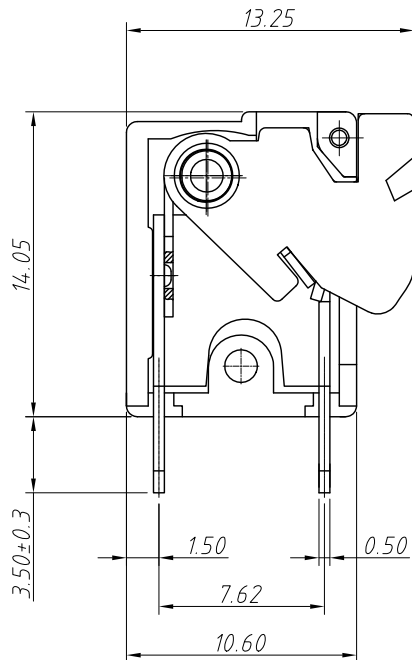
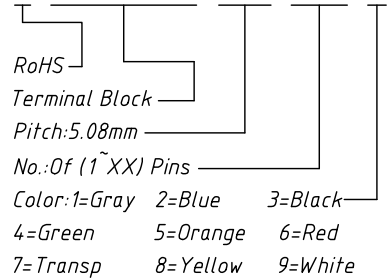
Stripping Length: 10mm

Temp. Range: -40°C ~ +105°C

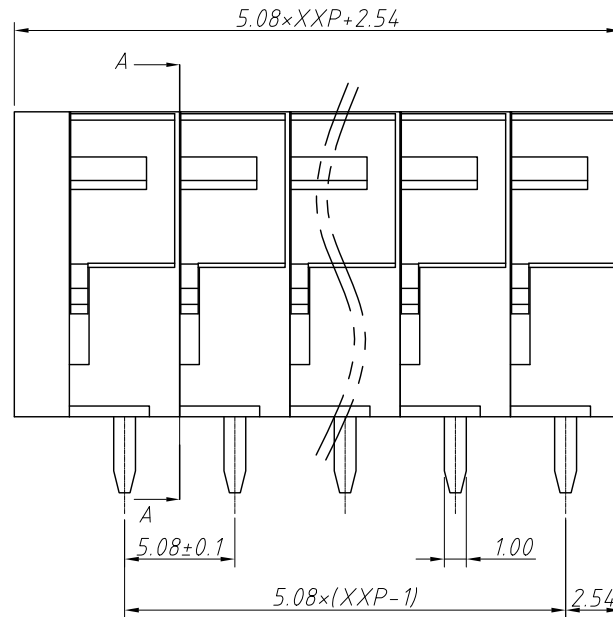
Max Soldering: 250°C for 5 Sec

Order Information

L-KLS2-142V-5.08-XXP-X



SECTION A-A



ANGLE TOLERANCE	PROJECTION	Description:	5.08mm Spring Terminal Blocks	
±3°				
GENERAL TOLERANCE	UNITS	mm	KLS P/N:	L-KLS2-142V-5.08-XXP-X
0 ~ 30	±0.50	SHEET SIZE	A4	
30 ~ 60	±0.75	Draw:	Song	2024-08-20
60 ~ 90	±1.00	Check:	Daniel	2024-08-20



NingBo KLS ELECTRONIC CO.,L TD.