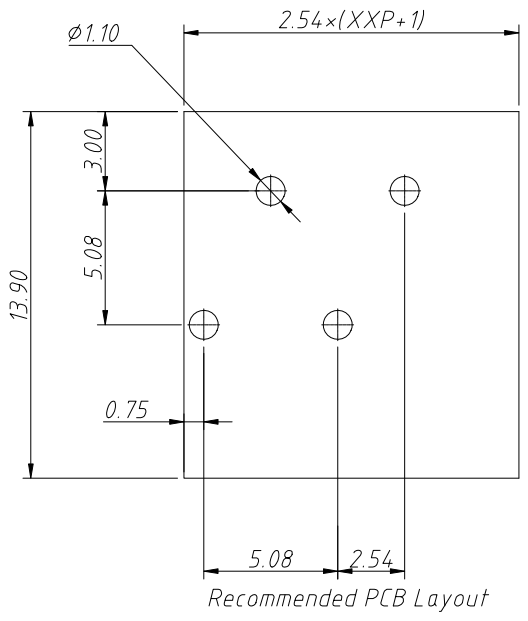
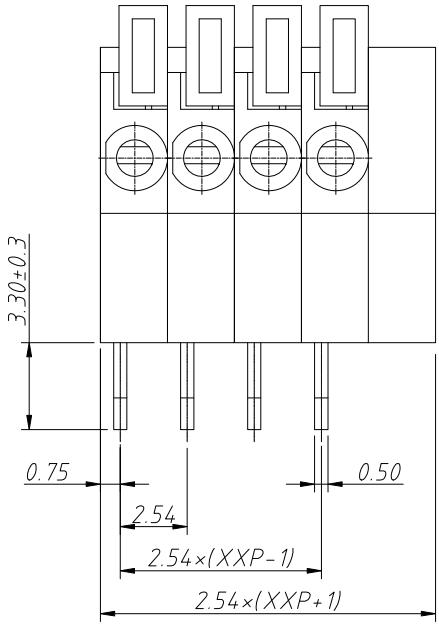


1  
RoHS Compliance

6	7	8
REV	SYM	Revision Record
V0	KLS02006	New Version Release
		Appr. Song
		Date 2024-10-14

B

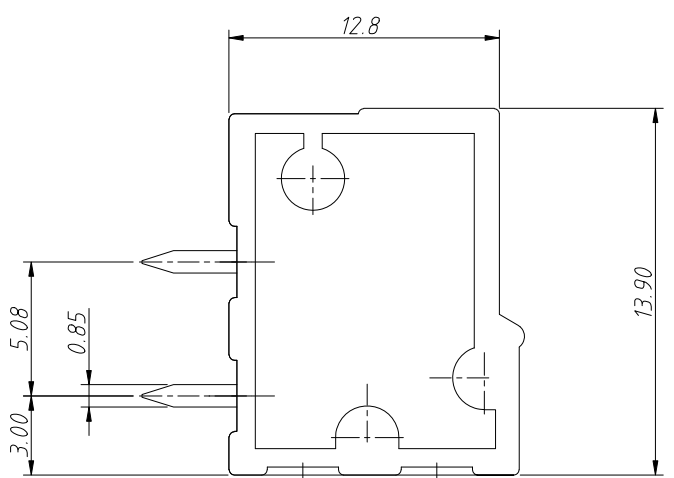


Electrical Characteristics	UL	IEC
Rated Voltage	150V	63V
Rated Current	4A	6A
Withstand Voltage	1300V/1Min	2.5KV
Wire Range	26~18AWG	0.2~0.5mm <sup>2</sup>

D

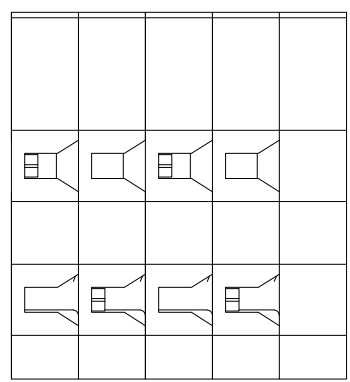
Material and other:  
 Housing: PA66, UL 94V-0  
 Pin Header: Brass, Tin Plated  
 Stripping Length: 11mm  
 Temp. Range: -40°C ~ +105°C

E



Order Information  
 L-KLS2-141R-2.54-XXP-4  
 RoHS  
 Terminal Block  
 Pitch: 2.54mm  
 No.: Of Pins  
 Color: 1=Gray 2=Blue 3=Black  
 4=Green 5=Orange 6=Red  
 7=Transp 8=Yellow 9=White

F



G

ANGLE TOLERANCE	PROJECTION	Description:
±3°		Pitch 2.54mm Screw fixation Terminal Block
GENERAL TOLERANCE	UNITS	mm
0~30 ±0.50	SHEET SIZE	A4
30~60 ±0.75	Draw:	Song
60~90 ±1.00	Check:	Daniel
		2024-10-14
		2024-10-14
		L-KLS2-141R-2.54-XXP-X
		NingBo KLS ELECTRONIC CO.,L TD.

H