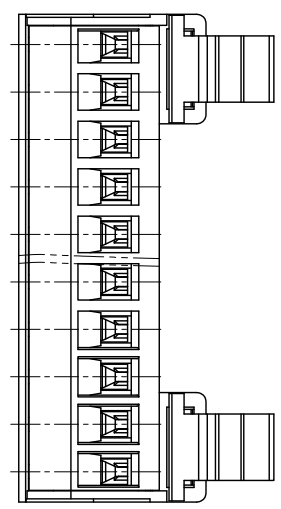
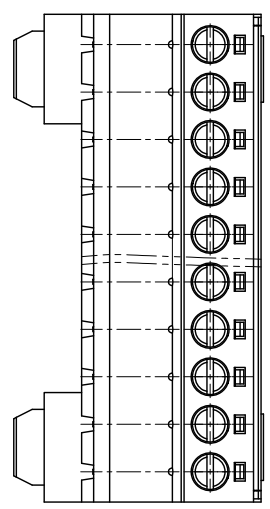
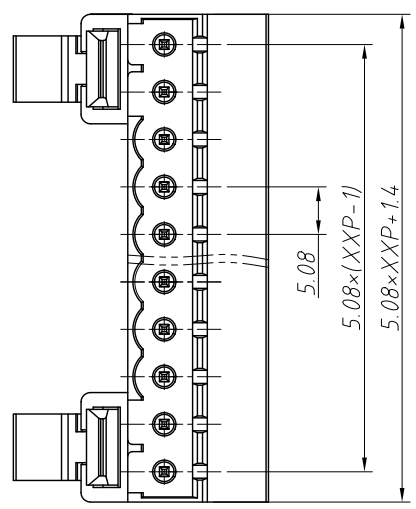


1
RoHS Compliance

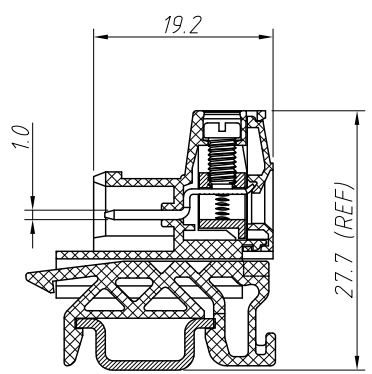
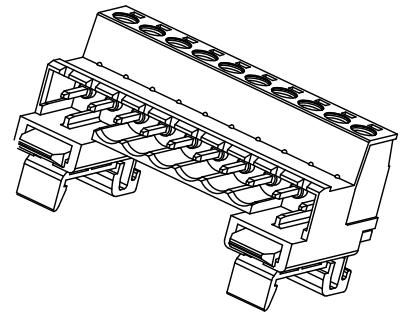
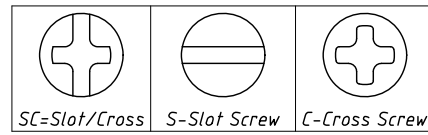
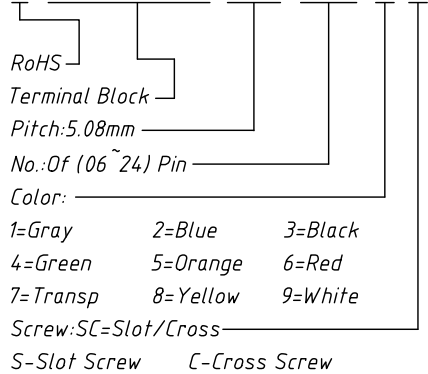
6		7		8	
REV	SYM	Revision Record		Appr.	Date
V0	KLS02006	New Version Release		WuHao	2024-10-28



Electrical Characteristics	UL	IEC
Rated Voltage	300V	450V
Rated Current	15A	20A
Withstand Voltage	AC2000V/1 min	---
Wire Range	28~14 AWG	2.5mm ²

Material and other:
 Housing:PA66, UL 94V-0 Cage:Brass,Ni Plated
 Pin Header:Brass,Tin Plated
 Screw/Torque:Steel,M3,Zn Plated/0.5N.m
 Contact Resistance:20mΩ Max
 Insulation Resistance:500MΩ/DC500V Min
 Stripping Length:7~8mm
 Temp. Range:-40°C ~ +105°C

Order Information
 L-KLS2-DGXX-5.08-XXP-X X



ANGLE TOLERANCE	PROJECTION	Description:			
±3°		Pitch 5.08mm Terminal Block			
GENERAL TOLERANCE	UNITS	mm	KLS P/N:	L-KLS2-DGXX-5.08-XXP-XX	
0~30 ±0.50	SHEET SIZE	A4			
30~60 ±0.75	Draw:	WuHao	2024-10-28	NingBo KLS ELECTRONIC CO.,L TD.	
60~90 ±1.00	Check:	Daniel	2024-10-28		