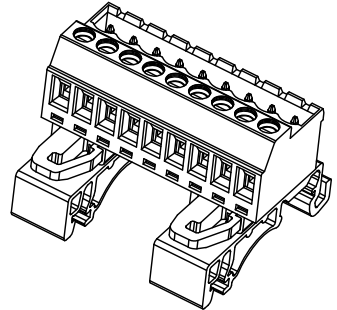
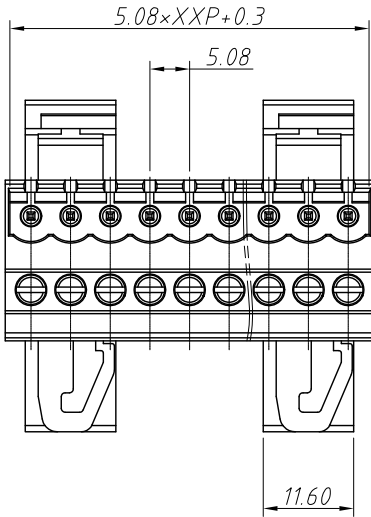


1
RoHS Compliance

6		7		8	
REV	SYM	Revision Record		Appr.	Date
V0	KLS02006	New Version Release		WuHao	2024-11-07

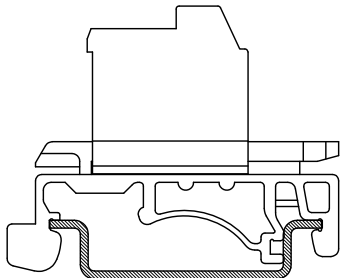
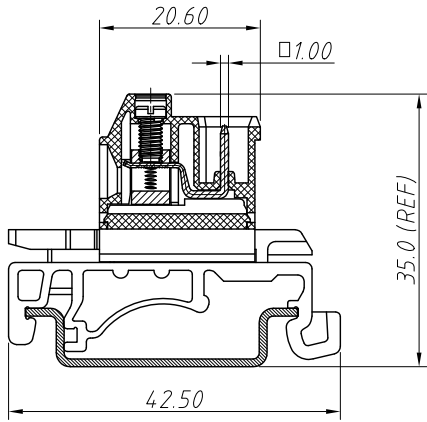
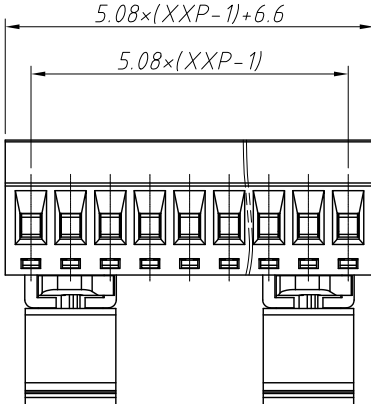
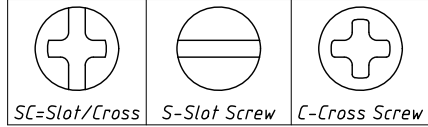
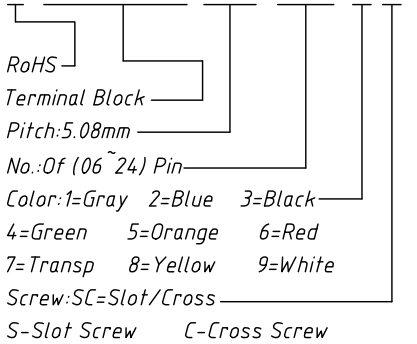


Electrical Characteristics	UL	IEC
Rated Voltage	300V	450V
Rated Current	15A	20A
Withstand Voltage	AC2000V/1 min	---
Wire Range	28~14 AWG	2.5mm ²

Material and other:
 Housing: PA66, UL 94V-0
 Pin Header/Cage: Brass, Ni Plated
 Screw/Torque: Steel, M3, Zn Plated/0.5N.m
 Contact resistance: 20mΩ MAX
 Insulation resistance: 500MΩ/DC500V
 Stripping Length: 7~8mm
 Temp. Range: -40°C ~ +105°C

Order Information

L-KLS2-UVK-5.08-XXP-XX



ANGLE TOLERANCE	PROJECTION		Description:		
±3°			Pitch 5.08mm Terminal Block		
GENERAL TOLERANCE	UNITS	mm	KLS P/N:	L-KLS2-UVK-5.08-XXP-XX	
0~30	±0.50	SHEET SIZE	A4		
30~60	±0.75	Draw:	WuHao	2024-11-07	
60~90	±1.00	Check:	Daniel	2024-11-07	

NingBo KLS ELECTRONIC CO.,L TD.