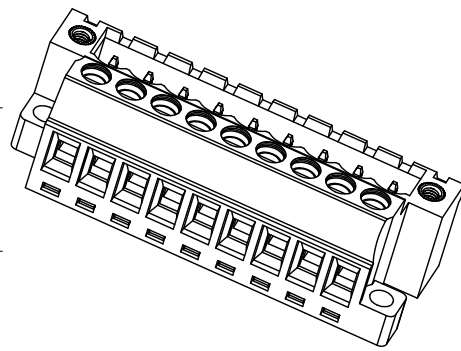
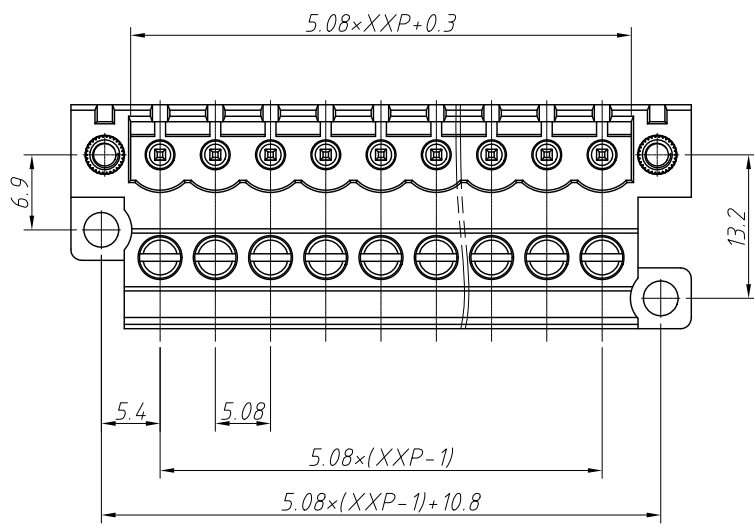


1 RoHS Compliance

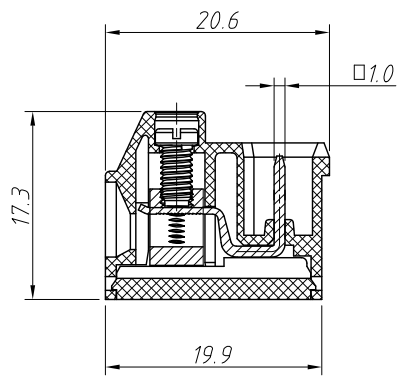
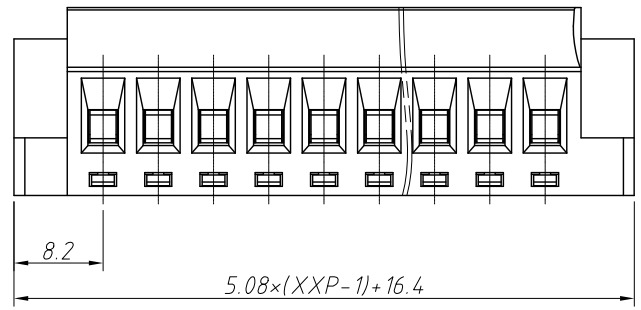
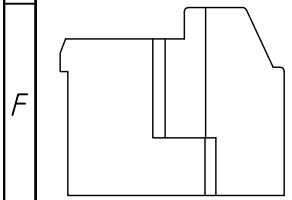
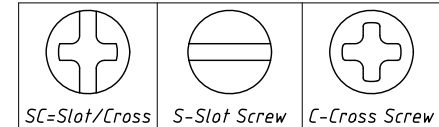
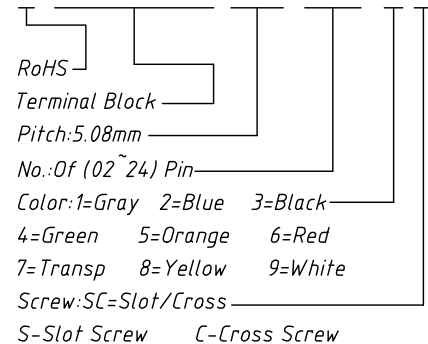
| | | | | |
|-----|----------|---------------------|-------|------------|
| REV | SYM | Revision Record | Appr. | Date |
| V0 | KLS02006 | New Version Release | WuHao | 2024-11-07 |



| | | |
|----------------------------|---------------|--------------------|
| Electrical Characteristics | UL | IEC |
| Rated Voltage | 300V | 450V |
| Rated Current | 15A | 20A |
| Withstand Voltage | AC2000V/1 min | --- |
| Wire Range | 28~14 AWG | 2.5mm ² |

Material and other:
 Housing:PA66, UL94V-0
 Pin Header/Cage:Brass,Ni Plated
 Screw/Torque:Steel,M3,Zn Plated/0.5N.m
 Nut:Brass
 Contact resistance:20mΩ MAX
 Insulation resistance:500MΩ/DC500V
 Stripping Length:7~8mm
 Temp.Range:-40°C~+105°C

Order Information
 L-KLS2-UHKM-5.08-XXP-XX



| | | |
|-------------------|------------|-----------------------------|
| ANGLE TOLERANCE | PROJECTION | Description: |
| ±3° | | Pitch 5.08mm Terminal Block |
| GENERAL TOLERANCE | UNITS | mm |
| 0~30 ±0.50 | SHEET SIZE | A4 |
| 30~60 ±0.75 | Draw: | WuHao 2024-11-07 |
| 60~90 ±1.00 | Check: | Daniel 2024-11-07 |

KLS NingBo KLS ELECTRONIC CO.,L TD.