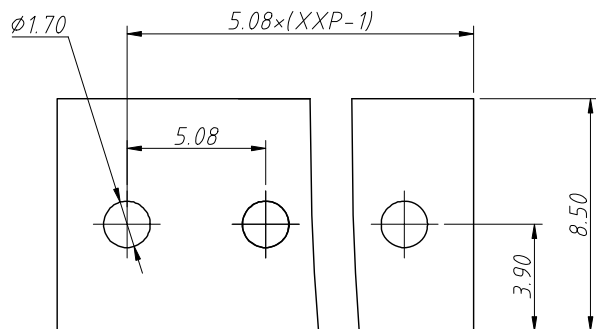
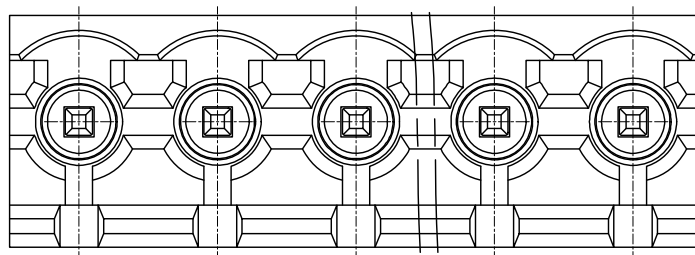


1 RoHS Compliance

REV	SYM	Revision Record	Appr.	Date
V0	KLS02006	New Version Release	Song	2024-08-19



Recommended PCB Layout



Electrical Characteristics	UL	IEC
Rated Voltage	300V	250V
Rated Current	15A	12A
Withstand Voltage	1600V / 1min	4.0KV

Material and other:

Housing:LCP, UL94V-0

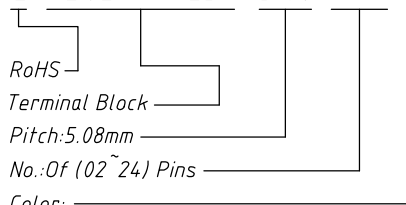
Pin:Copper Alloy,Sn Plated

Operating Temperature:-40°C ~ +130°C

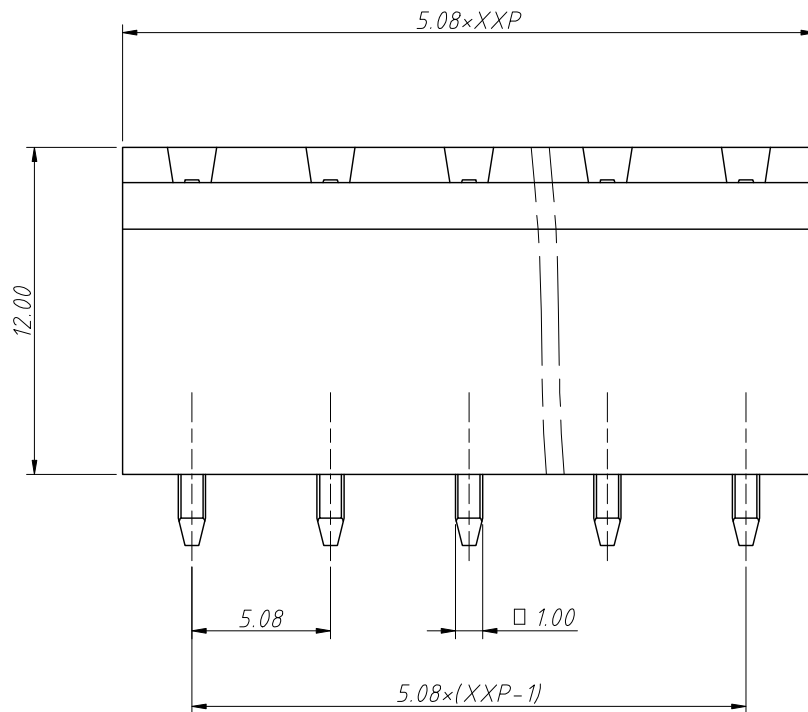
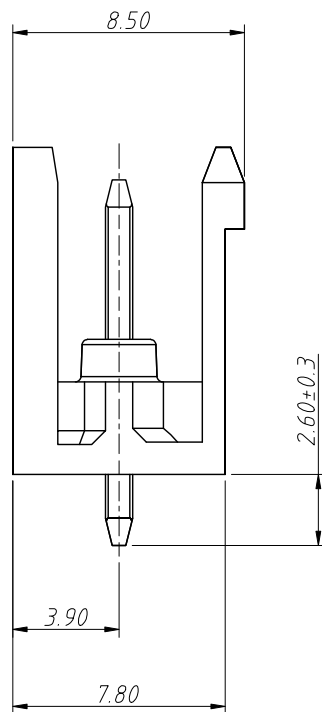
Soldering Temperature:285°C /10S

Order Information

L-KLS2-THREDV-5.08-XXP-X



- Color:
- 1=Gray      2=Blue      3=Black
  - 4=Green     5=Orange    6=Red
  - 7=Transp    8=Yellow    9=White



ANGLE TOLERANCE	PROJECTION	Description:
±3°		Pitch 5.08mm Pluggable Terminal Block ,Socket
GENERAL TOLERANCE	UNITS	mm
0~30 ±0.50	SHEET SIZE	A4
30~60 ±0.75	Draw:	Song 2024-08-19
60~90 ±1.00	Check:	Daniel 2024-08-19
		NingBo KLS ELECTRONIC CO.,LTD.