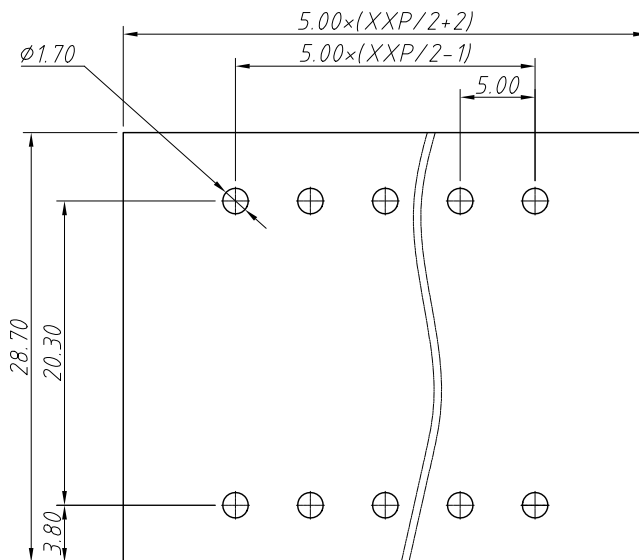
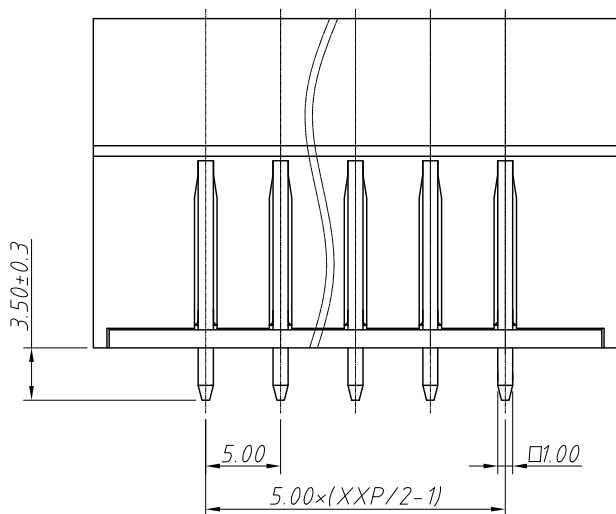
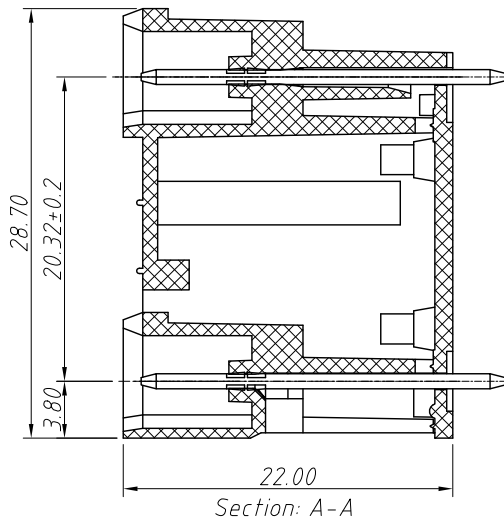
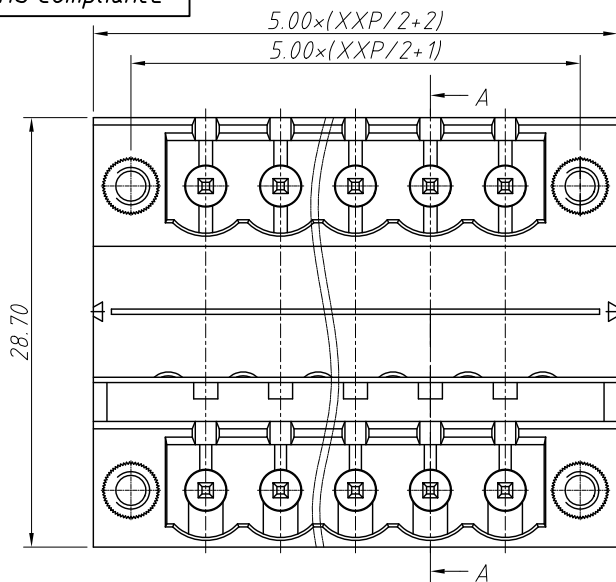


1 RoHS Compliance



Recommended PCB Layout

6	7	8
REV	SYM	Revision Record
V0	KLS02006	New Version Release
		Appr.
		WuHao
		Date
		2024-10-30

Electrical Characteristics	UL	IEC
Rated Voltage	300V	320V
Rated Current	15A	10A
Withstand Voltage	AC2000V/1 min	---

Material and other:
 Housing: PA66, UL 94V-0
 Pin Header: Brass, Sn Plated
 Temp. Range: $-40^{\circ}\text{C} \sim +105^{\circ}\text{C}$
 Soldering: $+250^{\circ}\text{C}$ For 5 Sec Max

Order Information

L-KLS2-EDDLV-5.00-XXP-4 09

RoHS

Terminal Block

Pitch: 5.00mm

No.: Of (04 ~ 48) Pin

Color:

1=Gray 2=Blue 3=Black

4=Green 5=Orange 6=Red

7=Transp 8=Yellow 9=White

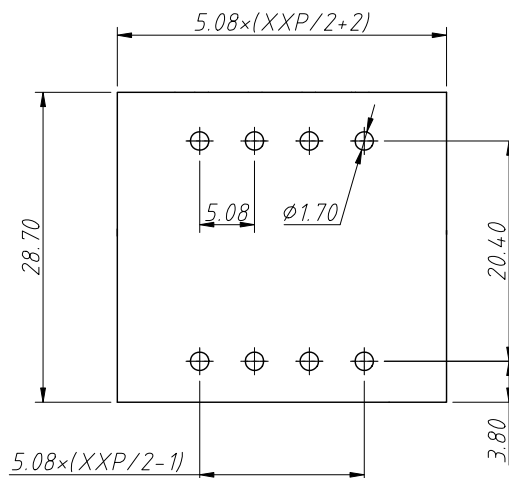
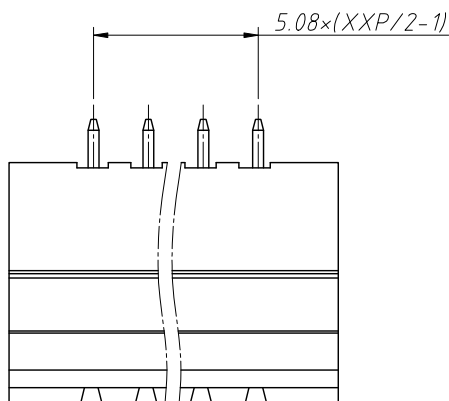
Product Code: 00 ~ 99

ANGLE TOLERANCE	PROJECTION	Description:
$\pm 3^{\circ}$		Pitch 5.00mm Terminal Block
GENERAL TOLERANCE	UNITS	KLS P/N:
$0 \sim 30$ ± 0.50	mm	L-KLS2-EDDLV-5.00-XXP-409
$30 \sim 60$ ± 0.75	SHEET SIZE	NingBo KLS ELECTRONIC CO.,L TD.
$60 \sim 90$ ± 1.00	A4	
	Draw:	WuHao 2024-10-30
	Check:	Daniel 2024-10-30

1 RoHS Compliance

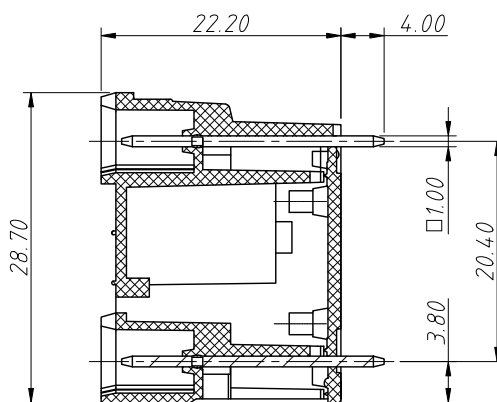
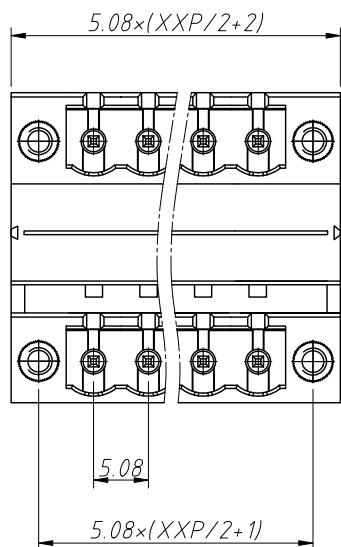
6	7	8
REV	SYM	Revision Record
V0	KLS02006	New Version Release
		Appr. Jenny
		Date 2024-10-30

Electrical	UL	IEC
Rated Voltage	300V	450V
Rated Current	15A	17.5A
Withstand Voltage	AC1250V/1 min	---



Recommended PCB Layout

Material and other:
 Housing:PA66, UL94V-0
 Pin Header:Brass,Tin Plated
 Nut:Brass
 Contact Resistance:20mΩ Max
 Insulation Resistance:500MΩ/DC500V Min
 Temp.Range:-40°C ~ +105°C
 Soldering:+250°C For 5 S Max



Order Information

L-KLS2-EDDLV-5.08-XXP-4 09

RoHS
 Terminal Block
 Pitch:5.08mm
 No.:Of (04 ~ 48) Pin
 Color:
 1=Gray 2=Blue 3=Black
 4=Green 5=Orange 6=Red
 7=Transp 8=Yellow 9=White
 Product Code:00 ~ 99

ANGLE TOLERANCE	PROJECTION	Description:
±3°		Pitch 5.08mm Terminal Block
GENERAL TOLERANCE	UNITS	mm
0 ~ 30	±0.50	KLS P/N:
30 ~ 60	±0.75	L-KLS2-EDDLV-5.08-XXP-409
60 ~ 90	±1.00	Draw: Jenny
	Check: Daniel	2024-10-30



NingBo KLS ELECTRONIC CO.,L TD.