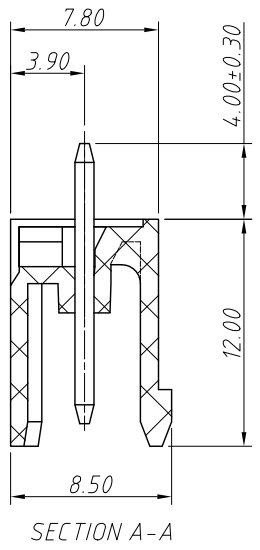
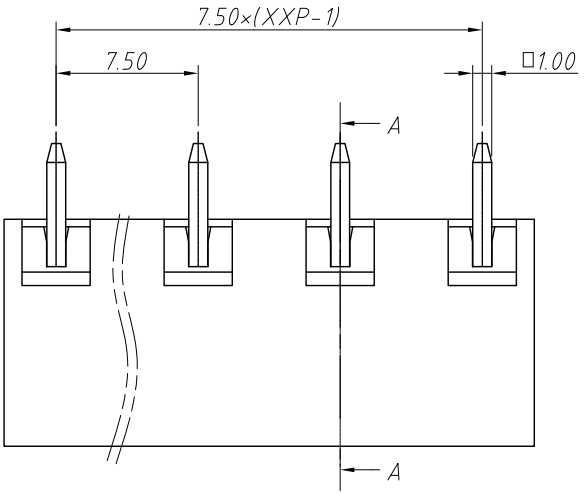


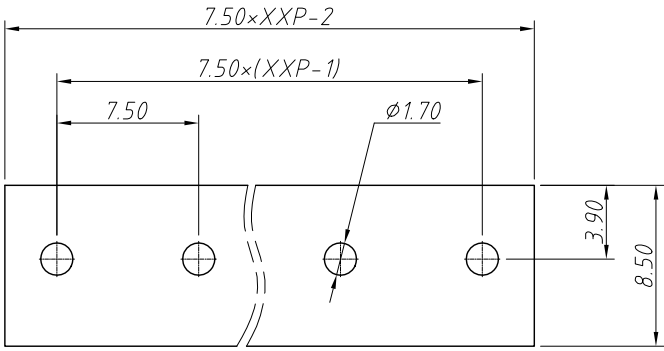
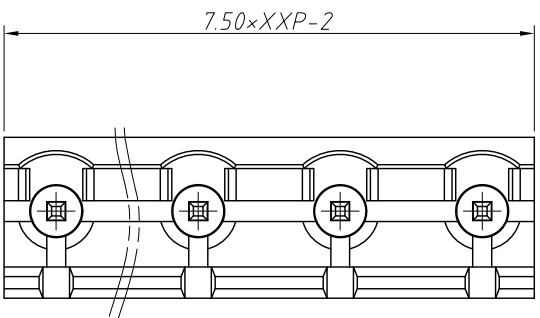
1
RoHS Compliance

6	7	8
REV	SYM	Revision Record
V0	KLS02006	New Version Release
		Appr.
		WuHao
		Date
		2024-11-04

Electrical Characteristics	UL	IEC
Rated Voltage	300V	450V
Rated Current	15A	17.5A
Withstand Voltage	AC2000V/1 min	---



Material and other:
 Housing: PA66, UL 94 V-0
 Pin Header: Brass, Tin Plated
 Contact resistance: 20mΩ MAX
 Insulation resistance: 500MΩ/DC500V
 Temp. Range: -40°C ~ +105°C
 Soldering: +250°C For 5 Sec



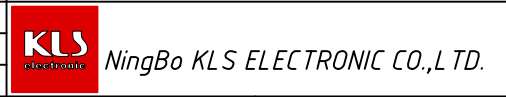
Order Information
 L-KLS2-EDV-7.50-XXP-X

RoHS
 Terminal Block
 Pitch: 7.50mm
 No. of (02 ~ 24) Pin
 Color:

1=Gray	2=Blue	3=Black
4=Green	5=Orange	6=Red
7=Transp	8=Yellow	9=White

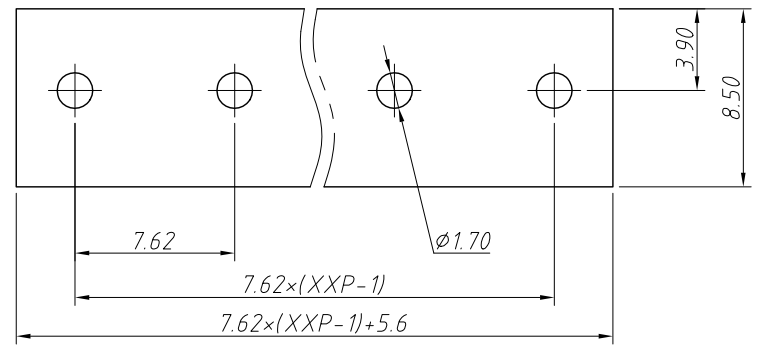
Recommended PCB Layout

ANGLE TOLERANCE	PROJECTION	Description:
±3°		Pitch 7.50mm Terminal Block
GENERAL TOLERANCE	UNITS	KLS P/N:
0 ~ 30 ±0.50	mm	L-KLS2-EDV-7.50-XXP-X
30 ~ 60 ±0.75	SHEET SIZE	
60 ~ 90 ±1.00	A4	
	Draw:	WuHao 2024-11-04
	Check:	Daniel 2024-11-04

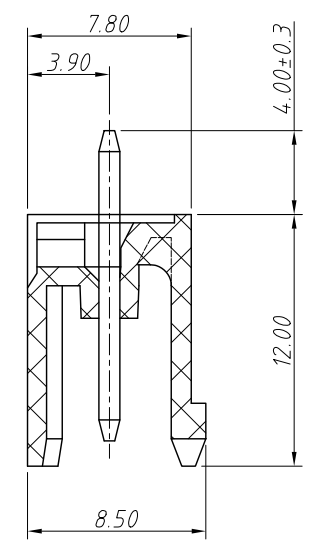
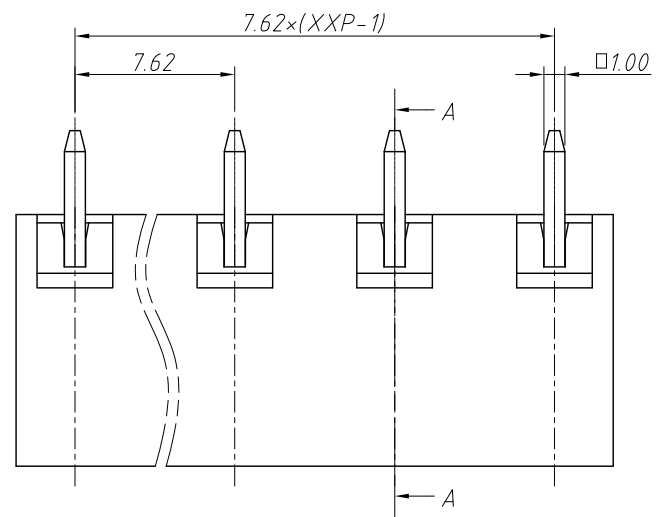


1
RoHS Compliance

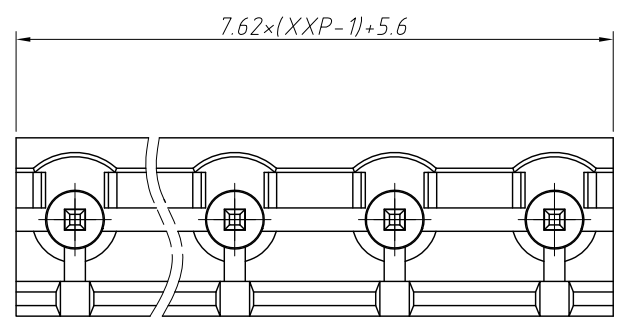
6		7		8	
REV	SYM	Revision Record		Appr.	Date
V0	KLS02006	New Version Release		WuHao	2024-11-06



Recommended PCB Layout



SECTION A-A



Electrical Characteristics	UL	IEC
Rated Voltage	300V	400V
Rated Current	15A	10A
Withstand Voltage	AC2000V/1 min	---

Material and other:
 Housing:PA66, UL 94 V-0
 Pin Header:Copper Alloy, Sn Plated
 Contact resistance:20mΩ MAX
 Insulation resistance:500MΩ/DC500V
 Temp.Range:-40°C ~ +105°C
 Soldering:+250°C For 5 Sec

Order Information
L-KLS2-EDV-7.62-XXP-X
 RoHS
 Terminal Block
 Pitch:7.62mm
 No.:Of (02~24) Pin
 Color:
 1=Gray 2=Blue 3=Black
 4=Green 5=Orange 6=Red
 7=Transp 8=Yellow 9=White

ANGLE TOLERANCE	PROJECTION	Description:			
±3°		Pitch 7.62mm Terminal Block			
GENERAL TOLERANCE	UNITS	mm	KLS P/N:		
0~30 ±0.50	SHEET SIZE	A4	L-KLS2-EDV-7.62-XXP-X		
30~60 ±0.75	Draw:	WuHao	2024-11-06		
60~90 ±1.00	Check:	Daniel	2024-11-06		