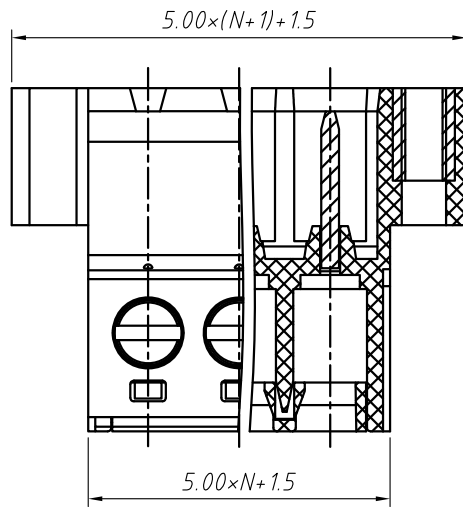


SECTION A-A



SECTION B-B

Material
 Housing: PA66, UL94V-0
 Screws: M3 Steel, Zinc plated
 Pin header: Brass, Tin plated
 Wire guard: Brass, Ni plated

Electrical
 Rated voltage: 300V
 Rated current: 15A
 Contact Resistance: 20 mΩ
 Insulation resistance: 500MΩ/DC500V
 Withstand voltage: AC2000V / 1 min
 Wire range: 28-14 AWG 2.5mm²

Mechanical
 Torque: 0.4Nn(3.6Lb.in)
 Steip Length: 7mm
 Temp. Range: -40 °C - + 105 °C

Order Information

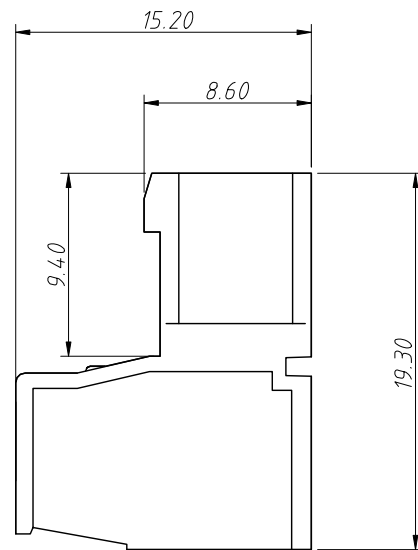
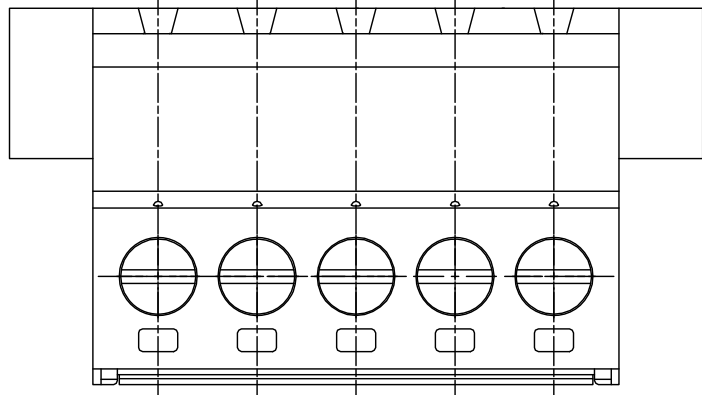
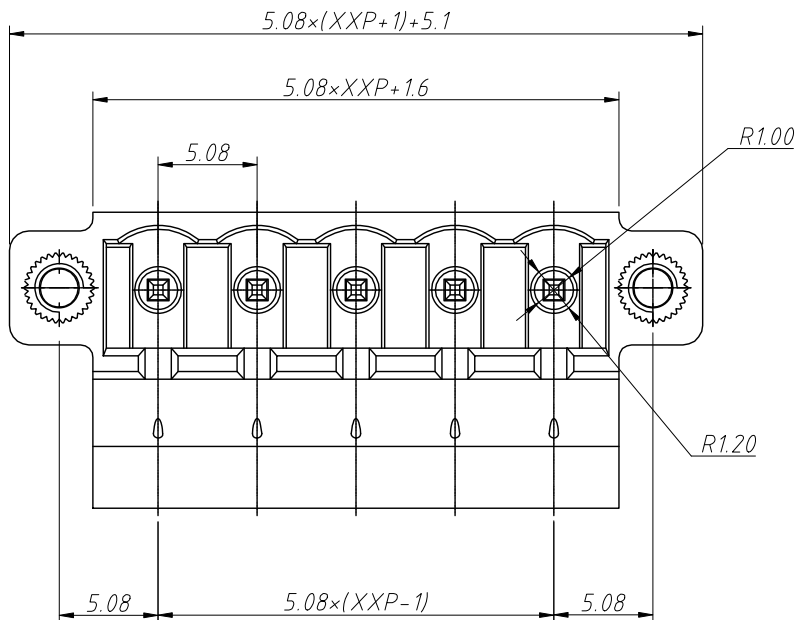
L-KLS2-DGKM-5.00-XXP-4 S 00

RoHS
 Terminal Block
 Pitch
 No.: of Pole
 Color: 4- Green
 Screw: S-Slot Screw C-Cross Screw
 Product Code: 00~99

GENERAL TOLERANCE		ANGLE TOLERANCE		Description:	
X. ±0.60		X. ±5°		Pluggable Terminal Block 5.00MM	
.X ±0.38		.X ±3°		KLS P/N:	KLS2-DGKM-5.00-XXP-4S-00
.XX ±0.25		.XX ±2°			
Draw by	2015-09-01	PROJECTION			NingBo KLS ELECTRONIC CO.,L TD.
Check by	2015-09-15	UNITS	mm		
SCALE		SHEET SIZE	A4		

1 RoHS Compliance

REV	SYM	Revision Record	Appr.	Date
V0	KLS02006	New Version Release	Song	2024-10-26

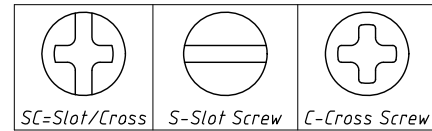
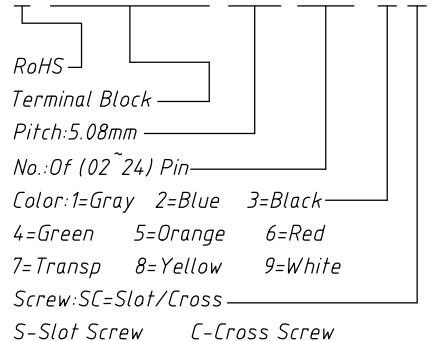


Electrical Characteristics	UL	IEC
Rated Voltage	300V	250V
Rated Current	15A	12A
Withstand Voltage	1600V/1 min	4.0KV
Wire Range	28~12 AWG	0.2~2.5mm ²

Material and other:
 Housing: PA66, UL94V-0
 Pin Header: Cobby Alloy, Sn Plated
 Screw/Torque: Steel, M3/0.5N.m
 Stripping Length: 7~8mm
 Operating Temperature: -40°C ~ +105°C

Order Information

L-KLS2-DGKM-5.08-XXP-XX



ANGLE TOLERANCE	PROJECTION	Description:	Pitch 5.08mm Terminal Block		
±3°					
GENERAL TOLERANCE	UNITS	mm	KLS P/N:	L-KLS2-DGKM-5.08-XXP-XX	
0~30 ±0.50	SHEET SIZE	A4			
30~60 ±0.75	Draw:	Song	2024-10-26	NingBo KLS ELECTRONIC CO.,LTD.	
60~90 ±1.00	Check:	Daniel	2024-10-26		