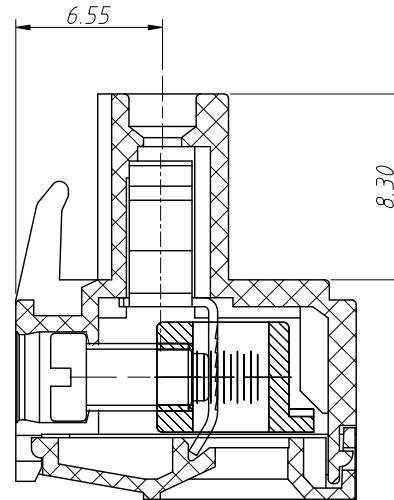
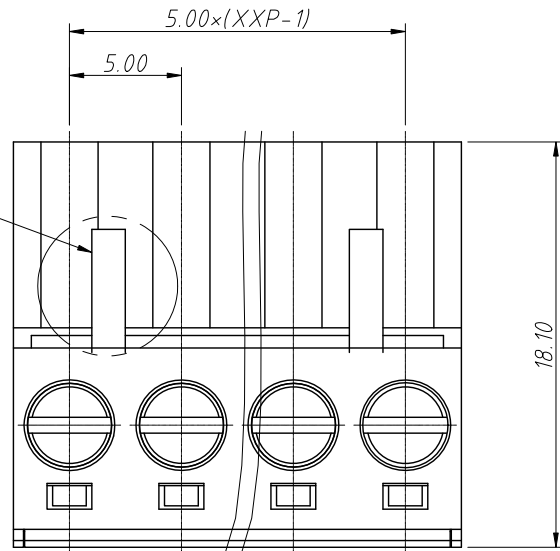


1 RoHS Compliance

| 6 | 7 | 8 | | |
|-----|----------|---------------------|-------|------------|
| REV | SYM | Revision Record | Appr. | Date |
| V0 | KLS02006 | New Version Release | WuHao | 2024-10-29 |



| | | |
|----------------------------|---------------|--------------------|
| Electrical Characteristics | UL | IEC |
| Rated Voltage | 300V | 320V |
| Rated Current | 15A | 17.5A |
| Withstand Voltage | AC2000V/1 min | --- |
| Wire Range | 22~12 AWG | 2.5mm ² |

Material and other:

Housing:PA66, UL 94 V-0

Cage:Brass,Ni Plated

Clamp:Phosphor Bronze,Ni Plated

Screws/Torque:Steel,M3.0,Zn Plated/0.5Nm

Temp.Range:-40°C ~ +105°C

Steip Length:7~8mm

Order Information

L-KLS2-EDDK-5.00-XXP-XX

RoHS

Terminal Block

Pitch:5.00mm

No.:Of (02~24) Pin

Color:

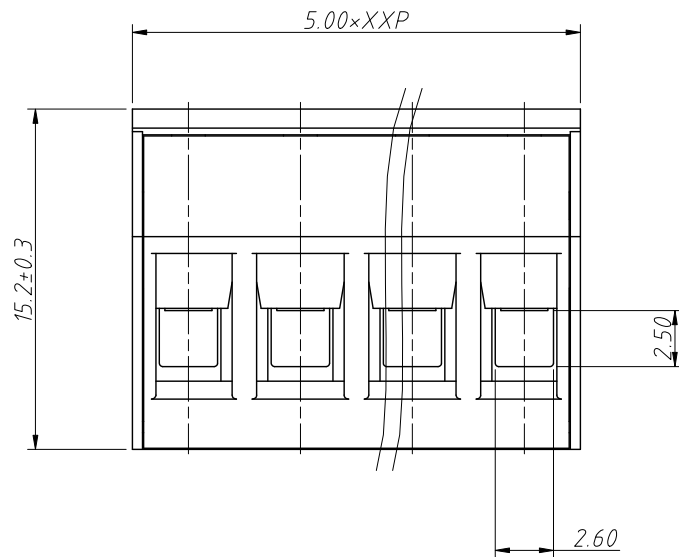
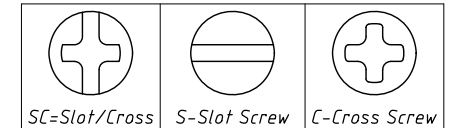
1=Gray 2=Blue 3=Black

4=Green 5=Orange 6=Red

7=Transp 8=Yellow 9=White

Screw:SC=Slot/Cross

S-Slot Screw C-Cross Screw



| | | |
|-------------------|------------|---------------------------------|
| ANGLE TOLERANCE | PROJECTION | Description: |
| ±3° | | Pitch 5.00mm Terminal Block |
| GENERAL TOLERANCE | UNITS | mm |
| 0~30 ±0.50 | SHEET SIZE | A4 |
| 30~60 ±0.75 | Draw: | WuHao 2024-10-29 |
| 60~90 ±1.00 | Check: | Daniel 2024-10-29 |
| KLS | | NingBo KLS ELECTRONIC CO.,L TD. |