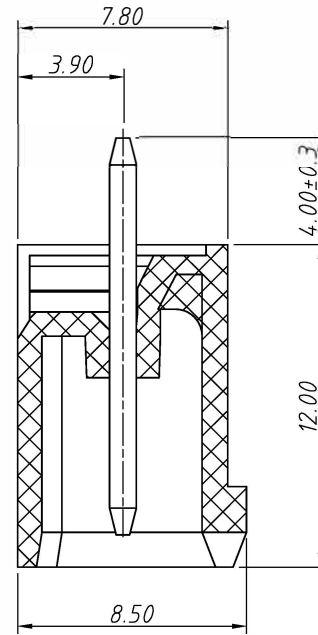
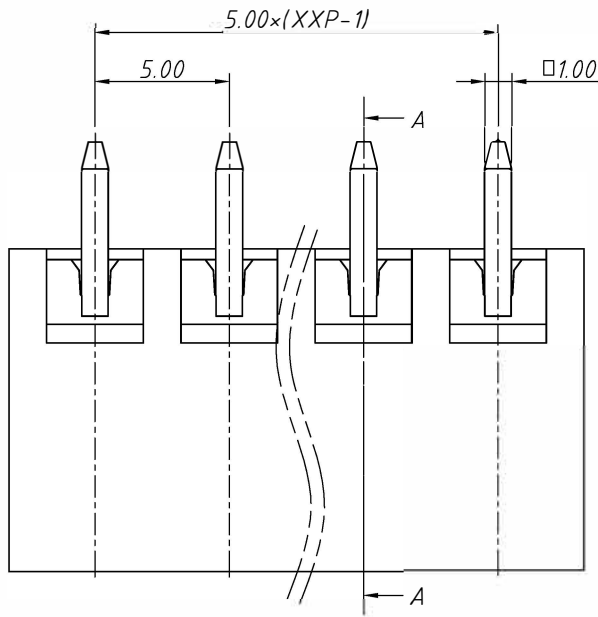
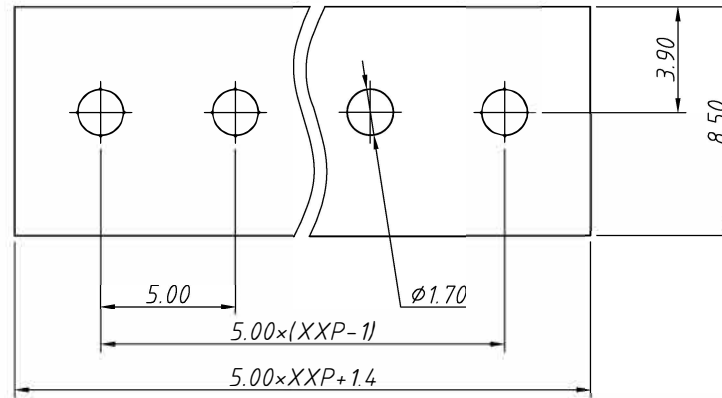
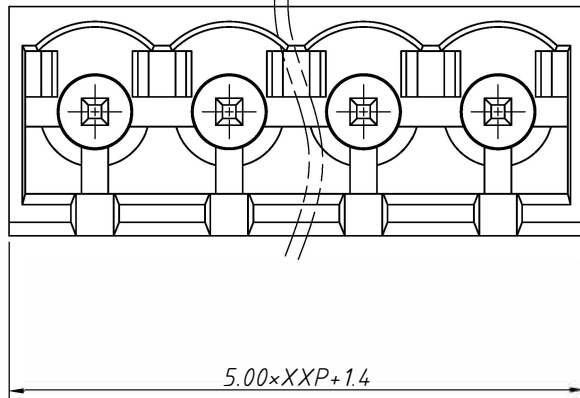


RoHS Compliance

REV	SYM	Revision Record	Appr.	Date
V0	KLS02006	New Version Release	WuHao	2024-11-06



SECTION A-A



Recommended PCB Layout

Electrical Characteristics	UL	IEC
Rated Voltage	300V	450V
Rated Current	15A	17.5A
Withstand Voltage	AC 2000V/1 min	---

Material and other:

Housing:PA66, UL94V-0

Pin Header:Brass,Tin Plated

Contact resistance:20mΩ MAX

Insulation resistance:500MΩ/DC500V

Temp. Range:-40°C ~ +105°C

Soldering:+250°C For 5 Sec

Order Information

L-KLS2-EDVC-5.00-XXP-X

RoHS

Terminal Block

Pitch:5.00mm

No.:Of (02 ~ 24) Pin

Color:

1=Gray 2=Blue 3=Black

4=Green 5=Orange 6=Red

7=Transp 8=Yellow 9=White

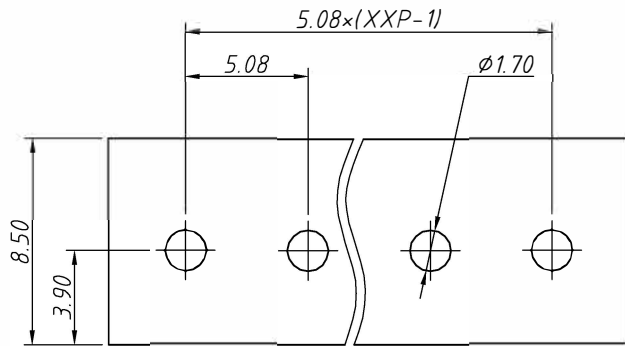
ANGLE TOLERANCE	PROJECTION	Description:
±3°		Pitch 5.00mm Terminal Block
GENERAL TOLERANCE	UNITS	mm
0 ~ 30	±0.50	SHEET SIZE
30 ~ 60	±0.75	Draw:
60 ~ 90	±1.00	Check:
		KLS P/N:
		L-KLS2-EDVC-5.00-XXP-X
		WuHao 2024-11-06
		Daniel 2024-11-06



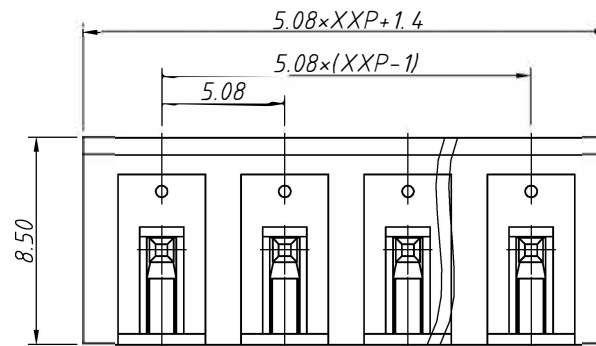
NingBo KLS ELECTRONIC CO.,LTD.

1 RoHS Compliance

REV	SYM	Revision Record	Appr.	Date
V0	KLS02006	New Version Release	WuHao	2024-11-06



Recommended PCB Layout



Electrical Characteristics	UL	IEC
Rated Voltage	300V	250V
Rated Current	15A	10A
Withstand Voltage	1600V/1 min	4.0 KV

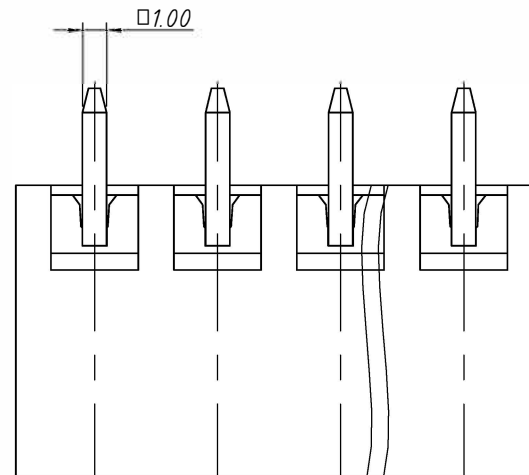
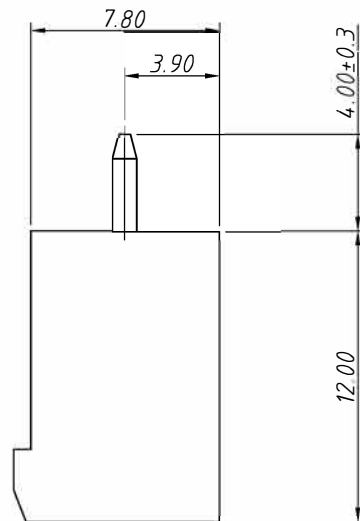
Material and other:

Housing:PA66, UL94V-0

Pin Header:Copper Alloy,Sn Plated

Operating Temperature:-40°C ~ +105°C

Soldering Temperature:+260°C For 5 Sec



Order Information

L-KLS2-EDVC-5.08-XXP-X

RoHS

Terminal Block

Pitch:5.08mm

No.:Of (02~24) Pin

Color:

1=Gray 2=Blue 3=Black

4=Green 5=Orange 6=Red

7=Transp 8=Yellow 9=White

ANGLE TOLERANCE	PROJECTION	Description:	Pitch 5.08mm Terminal Block	
±3°				
GENERAL TOLERANCE	UNITS	mm	KLS P/N:	L-KLS2-EDVC-5.08-XXP-X
0~30	±0.50	SHEET SIZE	A4	
30~60	±0.75	Draw:	WuHao	2024-11-06
60~90	±1.00	Check:	Daniel	2024-11-06



NingBo KLS ELECTRONIC CO.,LTD.