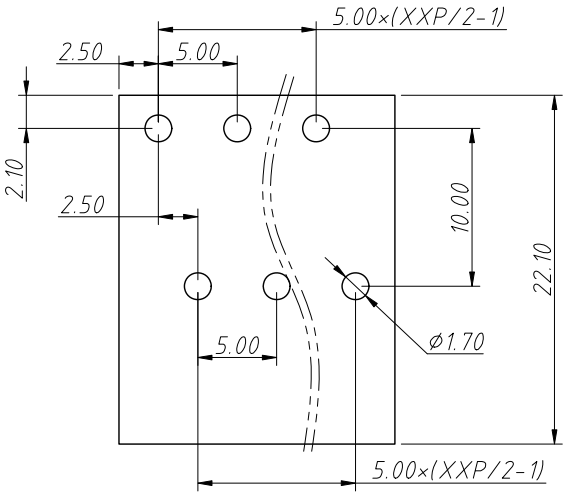
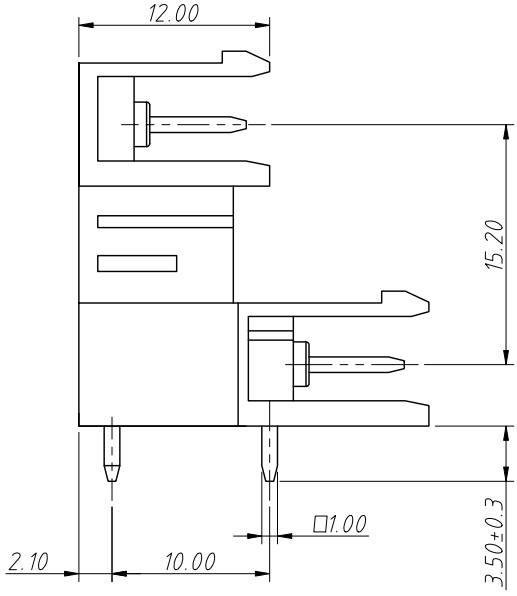
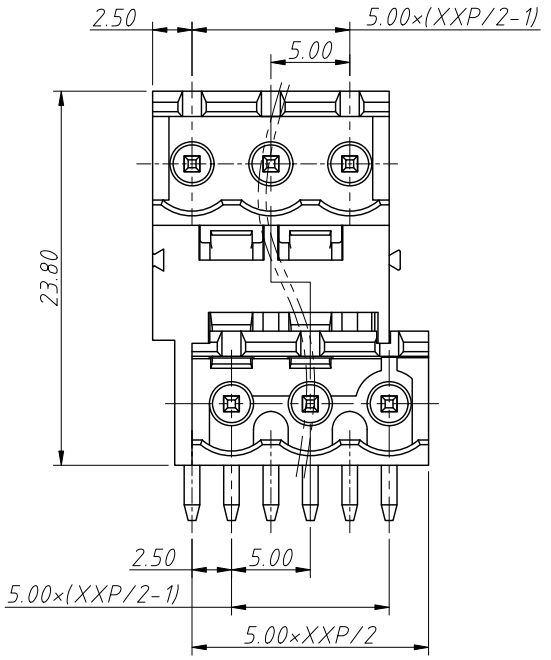
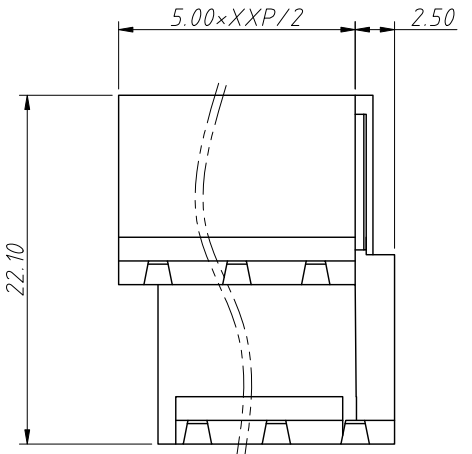


1
RoHS Compliance



Recommended PCB Layout



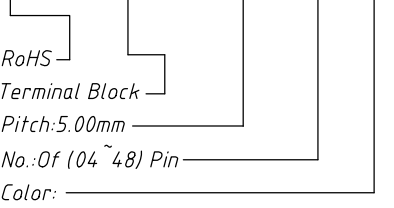
6	7	8
REV	SYM	Revision Record
V0	KLS02006	New Version Release
		Appr.
		WuHao
		Date
		2024-10-29

Electrical Characteristics	UL	IEC
Rated Voltage	300V	250V
Rated Current	15A	10A
Withstand Voltage	1600V/1 min	4.0 KV

Material and other:
 Housing/Cover:PA66, UL 94 V-0
 Pin Header:Copper Alloy,Sn Plated
 Operating temperature:-40°C ~ +105°C
 Soldering Temperature:+260°C For 5 Sec Max

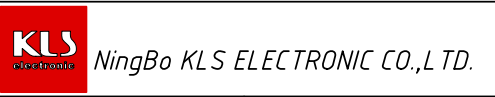
Order Information

L-KLS2-EDCR-5.00-XXP-X

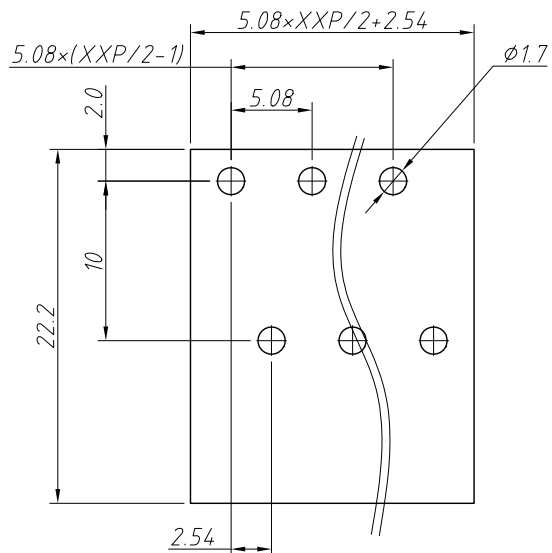


- 1=Gray 2=Blue 3=Black
- 4=Green 5=Orange 6=Red
- 7=Transp 8=Yellow 9=White

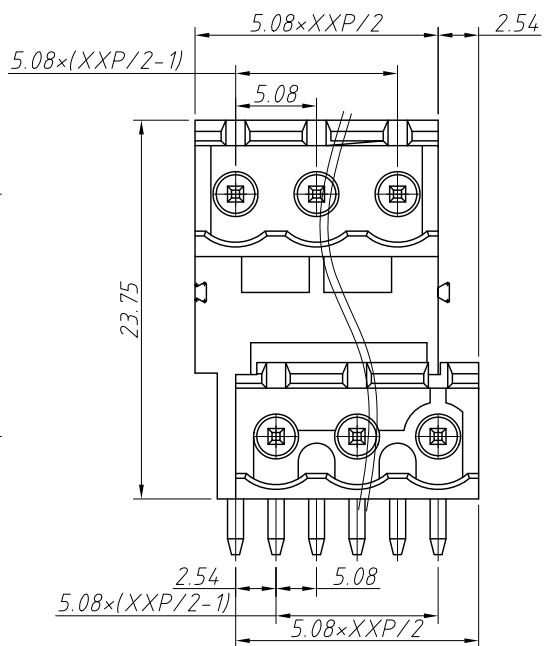
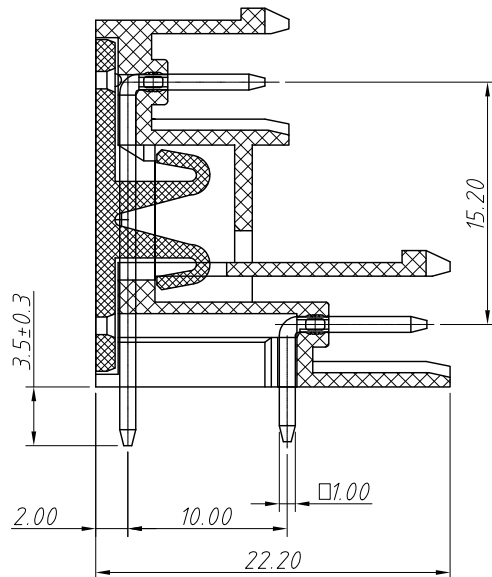
ANGLE TOLERANCE	PROJECTION	Description:
±3°		Pitch 5.00mm Terminal Block
GENERAL TOLERANCE	UNITS	mm
0~30	±0.50	KLS P/N:
30~60	±0.75	L-KLS2-EDCR-5.00-XXP-X
60~90	±1.00	
	SHEET SIZE	A4
	Draw:	WuHao 2024-10-29
	Check:	Daniel 2024-10-29



1 RoHS Compliance



Recommended PCB Layout



REV	SYM	Revision Record	Appr.	Date
V0	KLS02006	New Version Release	WuHao	2024-10-29

Electrical Characteristics	UL	IEC
Rated Voltage	300V	450V
Rated Current	15A	17.5A
Withstand Voltage	AC2000V/1 min	---

Material and other:
 Housing:PA66, UL 94V-0
 Pin Header:Brass, Tin Plated
 Temp.Range:-40°C ~ +105°C
 Soldering:+250°C For 5 Sec Max

Order Information

L-KLS2-EDCR-5.08-XXP-X

RoHS
 Terminal Block
 Pitch:5.08mm
 No.:Of (04~48) Pin
 Color:
 1=Gray 2=Blue 3=Black
 4=Green 5=Orange 6=Red
 7=Transp 8=Yellow 9=White

ANGLE TOLERANCE	PROJECTION	Description:
±3°		Pitch 5.08mm Terminal Block
GENERAL TOLERANCE	UNITS	mm
0~30	±0.50	SHEET SIZE
30~60	±0.75	Draw:
60~90	±1.00	Check:
KLS P/N:		L-KLS2-EDCR-5.08-XXP-X
KLS ELECTRONIC		NingBo KLS ELECTRONIC CO.,L TD.