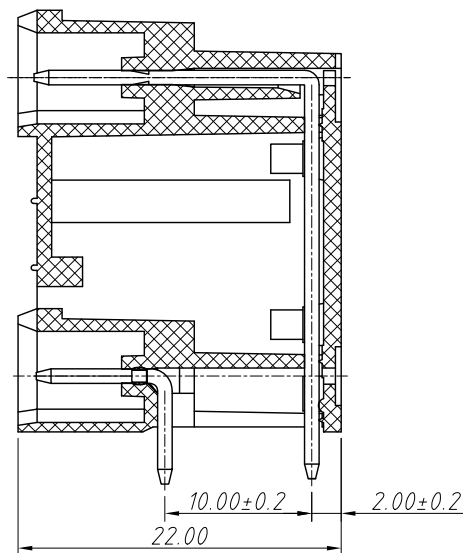
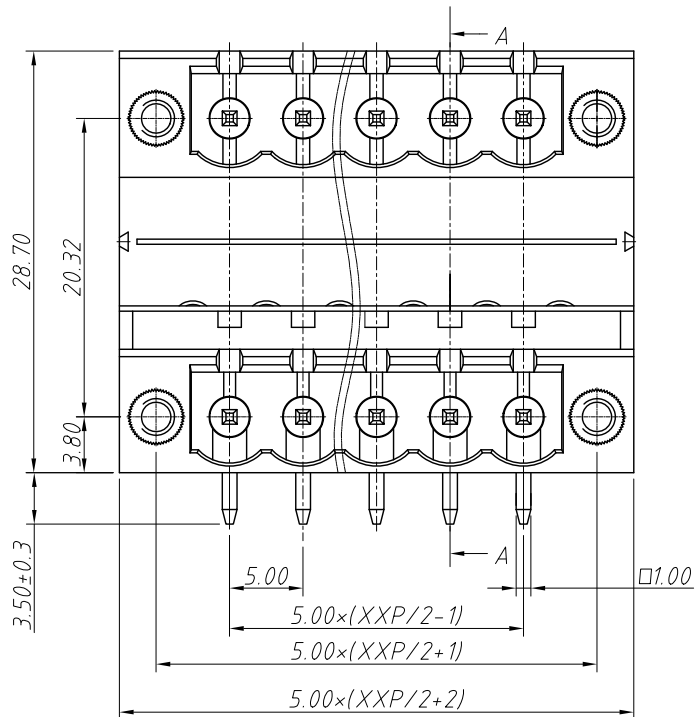
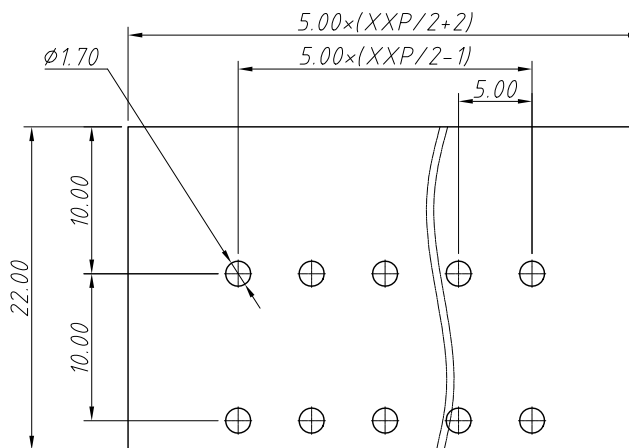


1 RoHS Compliance

6	7	8		
REV	SYM	Revision Record	Appr.	Date
V0	KLS02006	New Version Release	WuHao	2024-10-30



Section: A-A



Recommended PCB Layout

Electrical Characteristics	UL	IEC
Rated Voltage	300V	320V
Rated Current	15A	10A
Withstand Voltage	AC2000V/1 min	---

Material and other:
 Housing:PA66, UL 94V-0
 Pin Header:Brass,Sn Plated
 Temp.Range:-40°C ~ +105°C
 Soldering:+250°C For 5 Sec Max

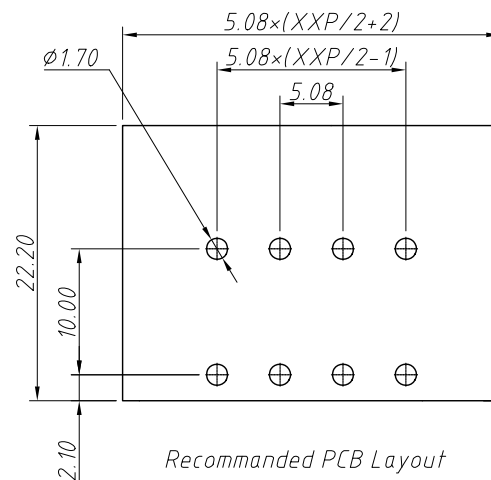
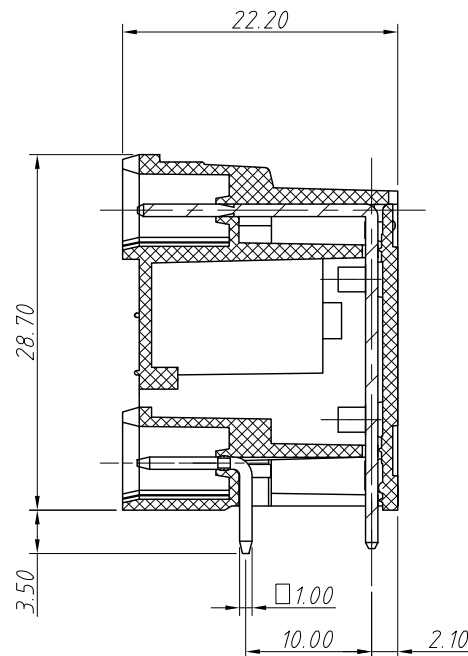
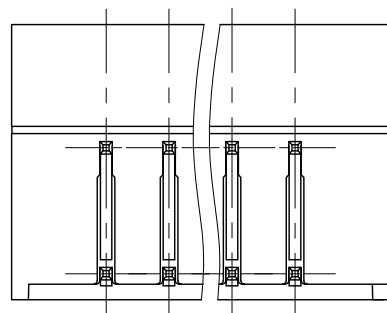
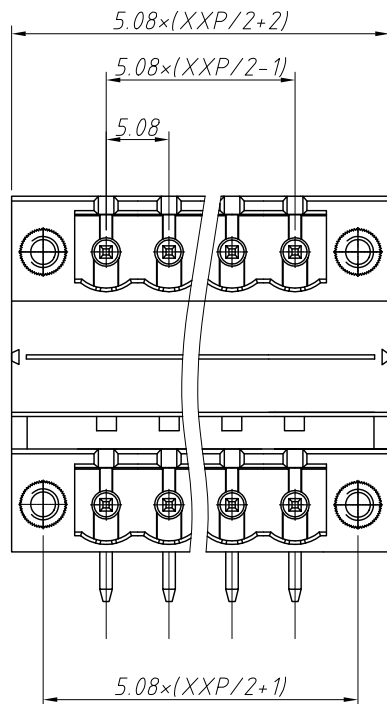
Order Information

L-KLS2-EDDLR-5.00-XXP-4 09

RoHS
 Terminal Block
 Pitch:5.00mm
 No.:Of (04~48) Pin
 Color:
 1=Gray 2=Blue 3=Black
 4=Green 5=Orange 6=Red
 7=Transp 8=Yellow 9=White
 Product Code:00~99

ANGLE TOLERANCE	PROJECTION	Description:		
±3°		Pitch 5.00mm Terminal Block		
GENERAL TOLERANCE	UNITS	mm	KLS P/N:	L-KLS2-EDDLR-5.00-XXP-409
0~30	±0.50	SHEET SIZE	A4	NingBo KLS ELECTRONIC CO.,L TD.
30~60	±0.75	Draw:	WuHao 2024-10-30	
60~90	±1.00	Check:	Daniel 2024-10-30	

1 RoHS Compliance



Recommended PCB Layout

REV	SYM	Revision Record	Appr.	Date
V0	KLS02006	New Version Release	WuHao	2024-10-30

Electrical Characteristics	UL	IEC
Rated Voltage	300V	450V
Rated Current	15A	17.5A
Withstand Voltage	AC1250V/1 min	---

Material and other:
 Housing:PA66, UL 94V-0
 Pin Header:Brass, Tin Plated
 Nut:Brass
 Temp.Range:-40°C ~ +105°C
 Soldering:+250°C For 5 Sec Max

Order Information

L-KLS2-EDDLR-5.08-XXP-4 09

RoHS
 Terminal Block
 Pitch:5.08mm
 No.:Of (04~48) Pin
 Color:
 1=Gray 2=Blue 3=Black
 4=Green 5=Orange 6=Red
 7=Transp 8=Yellow 9=White
 Product Code:00~99

ANGLE TOLERANCE	PROJECTION	Description:
±3°		Pitch 5.08mm Terminal Block
GENERAL TOLERANCE	UNITS	mm
0~30	±0.50	SHEET SIZE
30~60	±0.75	A4
60~90	±1.00	Draw: WuHao 2024-10-30
	Check: Daniel 2024-10-30	
		KLS NingBo KLS ELECTRONIC CO.,L TD.