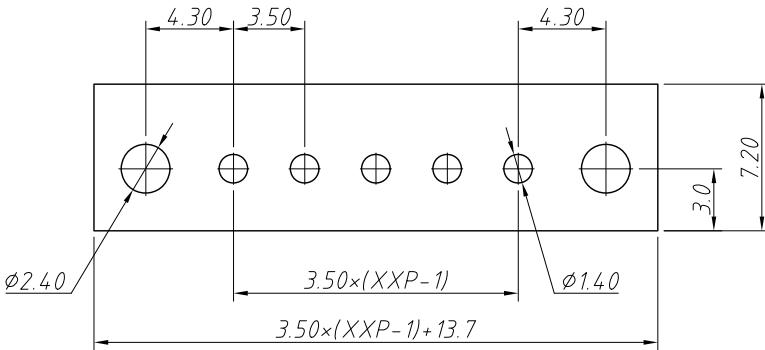
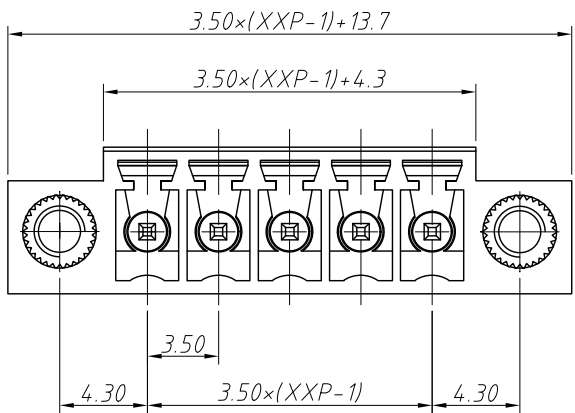


1
RoHS Compliance

2	3	4	5	6	7	8
REV	SYM	Revision Record		Appr.	Date	
V0	KLS02006	New Version Release		WuHao	2024-11-01	

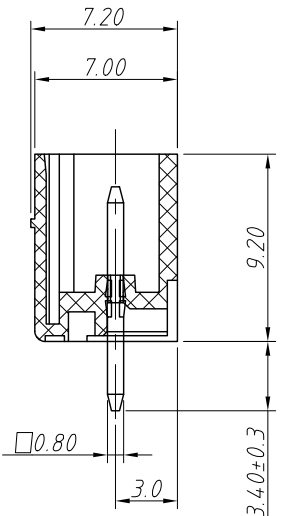


Recommended PCB Layout

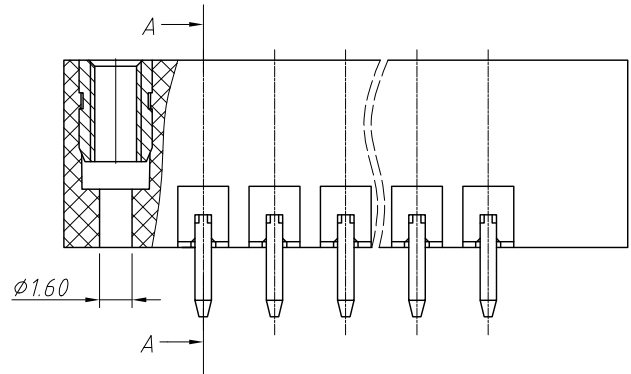


Electrical Characteristics	UL	IEC
Rated Voltage	300V	250V
Rated Current	8A	7A
Withstand Voltage	AC 2000V/1 min	---

Material and other:
Housing:PA66, UL 94V-0
Pin Header:Copper Alloy,Sn Plated
Nut:Copper Alloy
Temp. Range:-40°C ~ +105°C
Soldering:+250°C For 5 Sec



SECTION A-A



Order Information
L-KLS2-EDLV-3.50-XXP-X

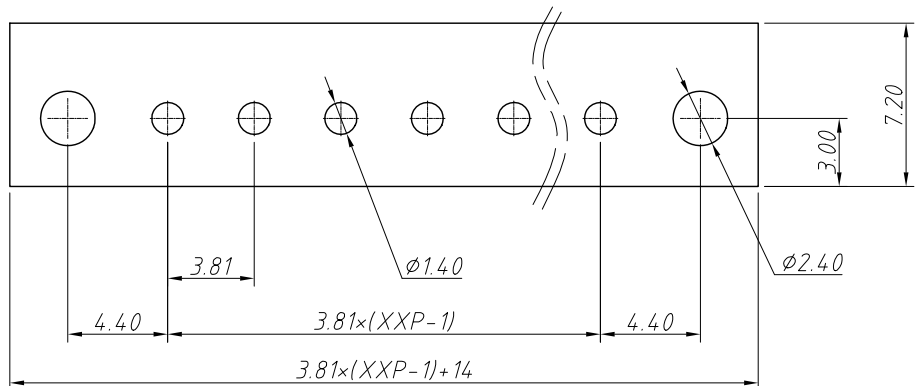
RoHS
Terminal Block
Pitch:3.50mm
No.:Of (02~24) Pin
Color:

1=Gray 2=Blue 3=Black
4=Green 5=Orange 6=Red
7=Transp 8=Yellow 9=White

ANGLE TOLERANCE	PROJECTION	Description:				
±3°		Pitch 3.50mm Terminal Block				
GENERAL TOLERANCE	UNITS	mm	KLS P/N:			
0~30	±0.50	SHEET SIZE	A4	L-KLS2-EDLV-3.50-XXP-X		
30~60	±0.75	Draw:	WuHao	2024-11-01		
60~90	±1.00	Check:	Daniel	2024-11-01	NingBo KLS ELECTRONIC CO.,L TD.	

1 RoHS Compliance

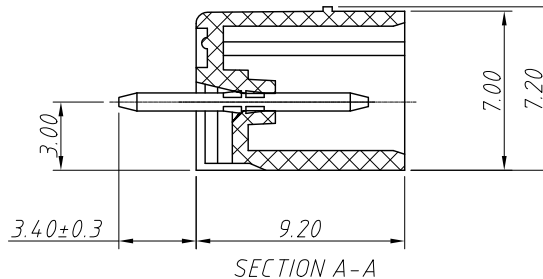
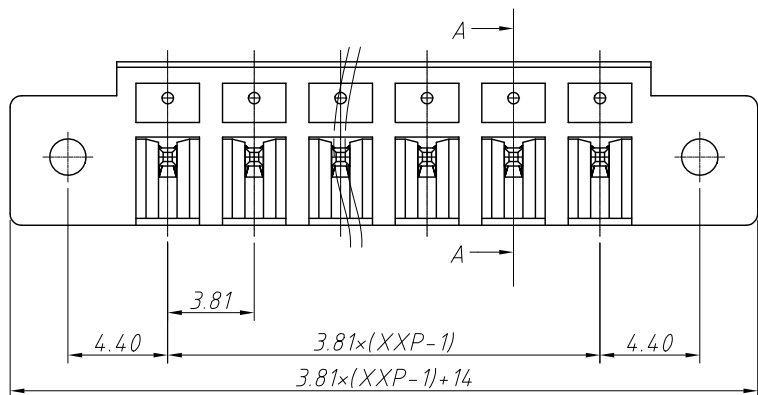
6	7	8		
REV	SYM	Revision Record	Appr.	Date
V0	KLS02006	New Version Release	WuHao	2024-11-01



Recommended PCB Layout

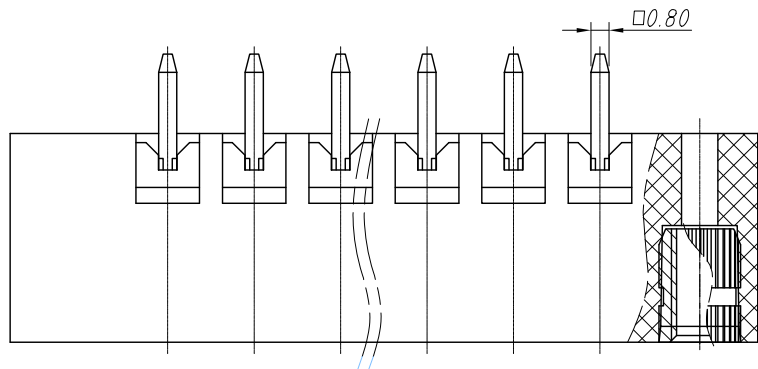
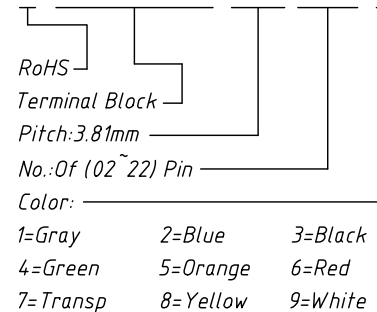
Electrical Characteristics	UL	IEC
Rated Voltage	300V	250V
Rated Current	8A	7A
Withstand Voltage	AC 2000V/1 min	---

Material and other:
 Housing: PA66, UL 94V-0
 Pin Header: Copper Alloy, Sn Plated
 Temp. Range: -40°C ~ +105°C
 Soldering: +250°C For 5 Sec



Order Information

L-KLS2-EDLV-3.81-XXP-X



ANGLE TOLERANCE	PROJECTION	Description:	Pitch 3.81mm Terminal Block	
±3°				
GENERAL TOLERANCE	UNITS	mm	KLS P/N:	L-KLS2-EDLV-3.81-XXP-X
0 ~ 30	±0.50	SHEET SIZE	A4	
30 ~ 60	±0.75	Draw:	WuHao	2024-11-01
60 ~ 90	±1.00	Check:	Daniel	2024-11-01

NingBo KLS ELECTRONIC CO.,L TD.