

1 RoHS Compliance

6	7	8		
REV	SYM	Revision Record	Appr.	Date
V0	KLS02006	New Version Release	WuHao	2024-11-01

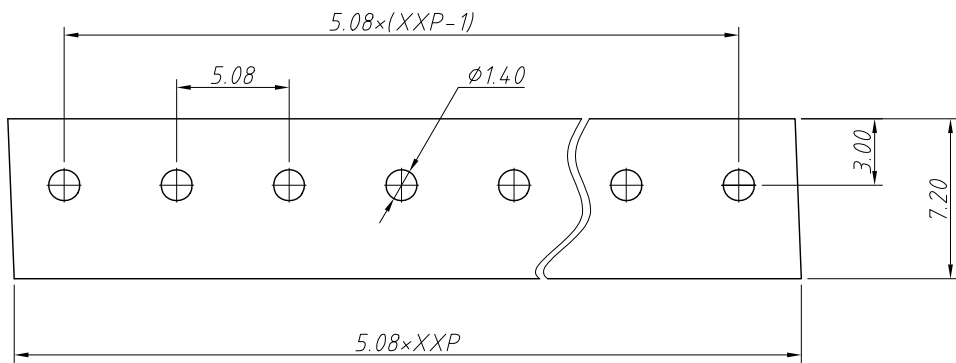
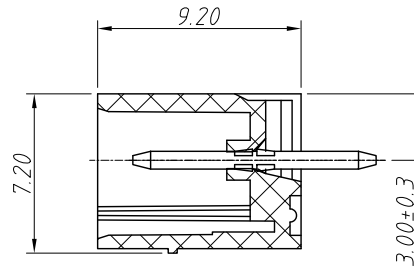
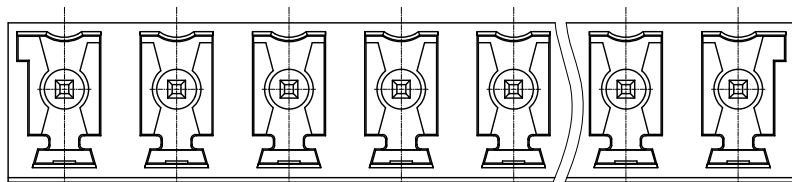
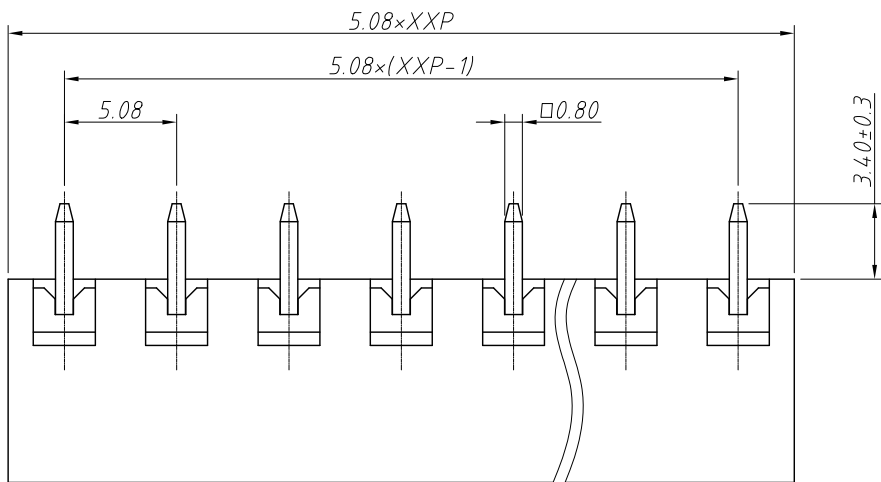
Electrical Characteristics	UL	IEC
Rated Voltage	300V	250V
Rated Current	8A	10A
Withstand Voltage	AC2000V/1 min	---

Material and other:  
 Housing:PA66, UL 94 V-0  
 Pin Header:Copper Alloy,Sn Plated  
 Contact resistance:20mΩ MAX  
 Insulation resistance:500MΩ/DC500V  
 Temp.Range:-40°C ~ +105°C  
 Soldering:+250°C, for 5 Sec

Order Information

L-KLS2-EDKFV-5.08-XXP-X

- RoHS
- Terminal Block
- Pitch:5.08mm
- No.:Of (02~24) Pin
- Color:1=Gray 2=Blue 3=Black
- 4=Green 5=Orange 6=Red
- 7=Transp 8=Yellow 9=White



Recommended PCB Layout

ANGLE TOLERANCE	PROJECTION	Description:
±3°		Pitch 5.08mm Terminal Block
GENERAL TOLERANCE	UNITS	mm
0~30	±0.50	SHEET SIZE
30~60	±0.75	Draw:
60~90	±1.00	Check:
		KLS P/N:
		L-KLS2-EDKFV-5.08-XXP-X
		NingBo KLS ELECTRONIC CO.,L TD.