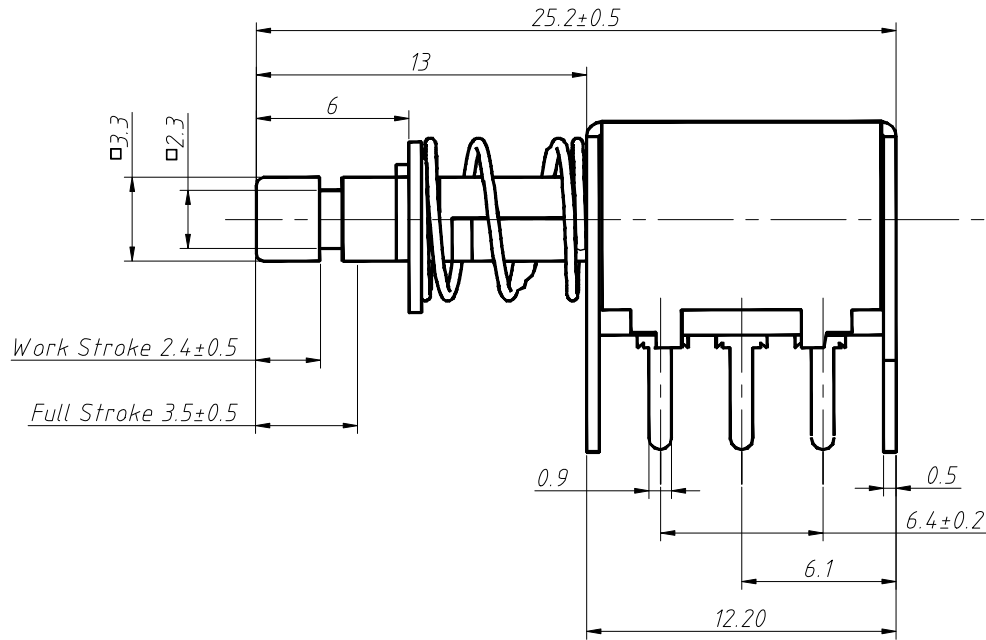


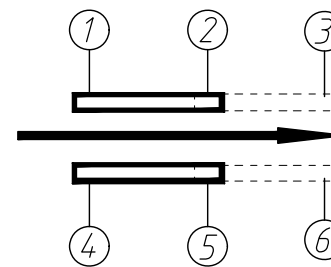
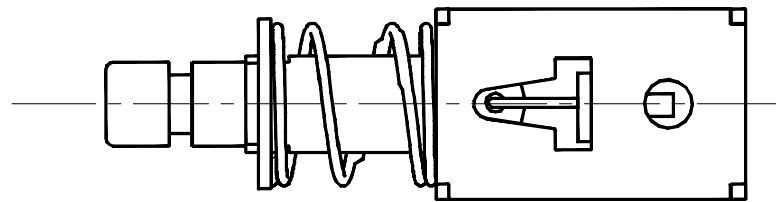
REV	SYM	Revision Record	Appr.	Date
V0	KLS07023	New Version Release	Yu	2024-08-12



**Electrical:**  
 Voltage rating:30V DC  
 Current rating:0.3A  
 Contact resistance:50mΩ Max.  
 Insulation resistance:100MΩ Min  
 Dielectric Withstanding Voltage:250V AC

**Mechanical:**  
 Operating Force:2~6N  
 Operating Life:10000 Cycles

**Notes:**  
 Install the switch: keep the appearance clean and smooth without scratching and feel good.

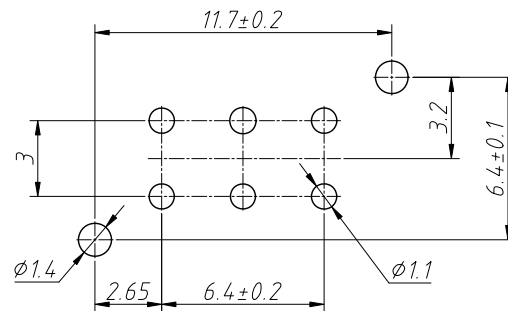


Schematic Diagram

**Order Information:**

L-KLS7-PS-003-22 A B A-X-X

L: RoHS  
 Push Switch  
 A-Lever Type  
 B-Class of metal house  
 A-Terminal Type  
 Switching action:  
 N-Non Locking L-Self Locking  
 Handle Color:BL-Blue  
 R-Red B-Black W-White



PCB Mounting Hole

ANGLE TOLERANCE	PROJECTION	Description:	Push Switch	
±3°				
GENERAL TOLERANCE	UNITS	mm	KLS P/N:	L-KLS7-PS-003-22ABA-X-X
x.x ±0.30	SHEET SIZE	A4		
x.xx ±0.20	Draw:	Jenny	2024-08-12	NingBo KLS ELECTRONIC CO.,L TD.
x.xxx ±0.10	Check:	Daniel	2024-08-12	