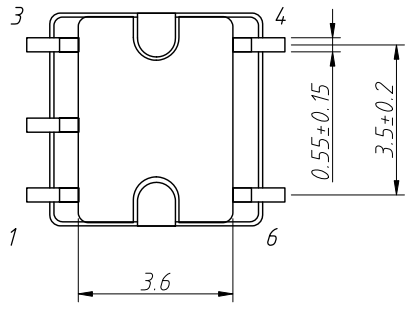
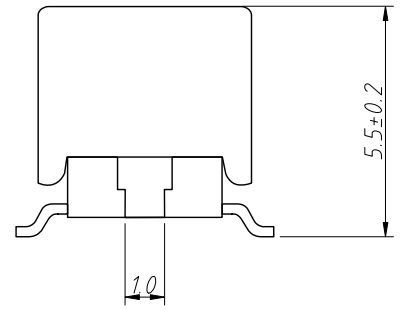
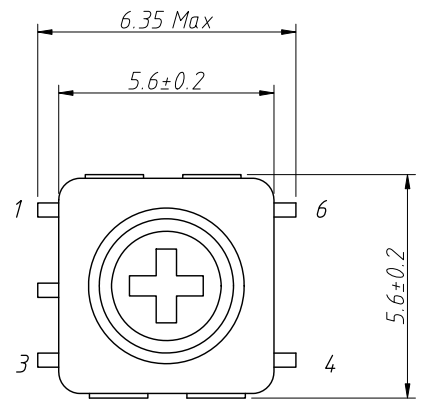
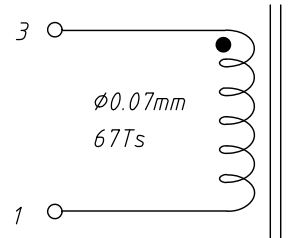


1. Physical Characteristics(mm)



2. Electronical Schematic



3. Electronical Specifications:

- No-Load Q: 45 Min@796kHz
- Inductance: 100uH±6%@796kHz
- Dielectric Strength: 100VDC.1 min
COIL-COIL, COIL CASE
- Insulating Resistance: 100MΩ Min. 100VDC
COIL-COIL, COIL-CASE
- Torque: 45 to 300g.cm
- Operating Temperature: -25°C ~ 85°C
- Storage Temperature: -40°C ~ 70°C

Notes:
Temp: 20°C 48%RH

ANGLE TOLERANCE	PROJECTION	Description:	Adjustable Inductors	
±3°				
GENERAL TOLERANCE	UNITS	mm	KLS P/N:	L-KLS18-MDS5655
.x ±0.30	SHEET SIZE	A4		
.xx ±0.20	Draw:	Song	2024-11-18	NingBo KLS ELECTRONIC CO.,L TD.
.xxx ±0.10	Check:	Daniel	2024-11-18	