

# TERMINAL BLOCK Connector

## Pluggable Series

KLS2-EDLY-3.50/3.81 Series Pitch=3.50mm/3.81mm

### Electrical :

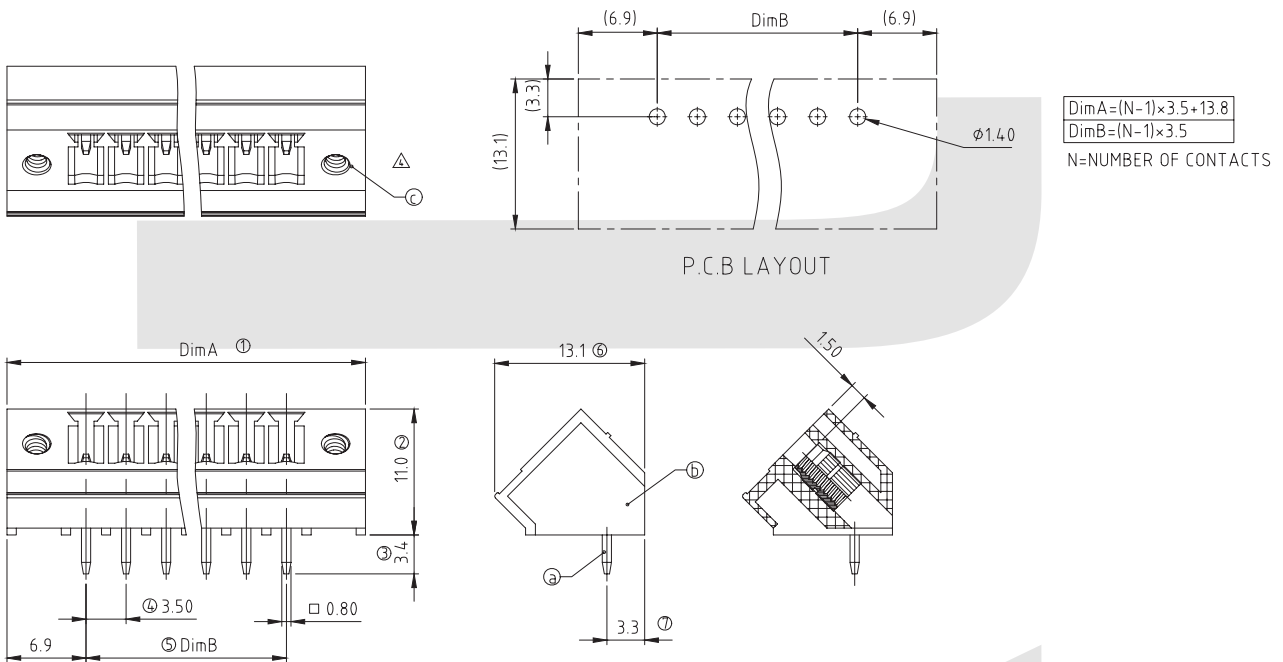
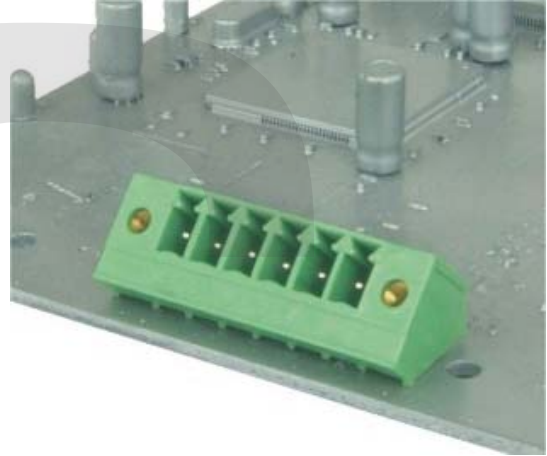
Rated voltage: 300V  
Rated current: 8A  
Contact resistance: 20mΩ  
Insulation resistance: 5000MΩ/1000V  
Withstanding Voltage: AC2000V/1Min

### Material

Pin header: Brass, Tin plated  
Housing: PA66, UL94V-0

### Mechanical

Temp. Range: -40°C~+105°C  
MAX Soldering: +250°C for 5 Sec



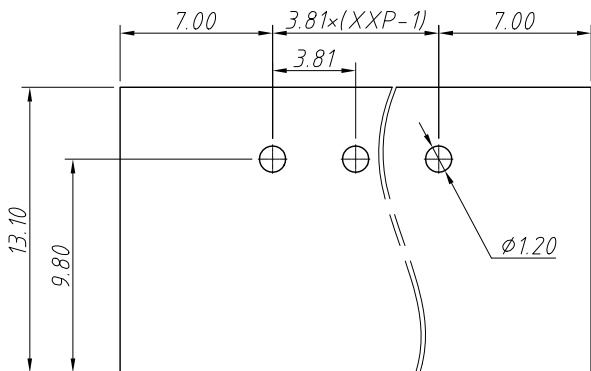
## ORDER INFORMATION

Product NO.: KLS2-EDLY-3.50-XXP X X

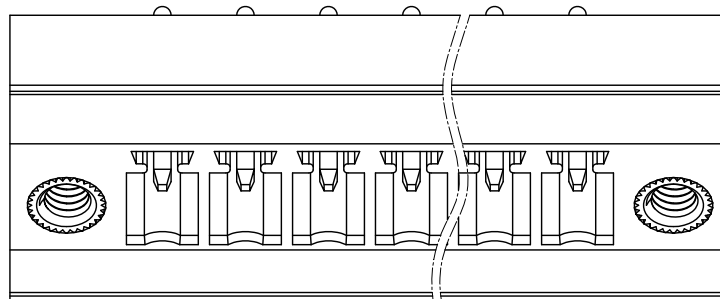
Pos. NO. \_\_\_\_\_  
 Series No. \_\_\_\_\_  
 Pitch: 3.50=3.50mm    3.81=3.81mm  
 Number of Pole \_\_\_\_\_  
 Customer Request \_\_\_\_\_  
 Color: 1=Gray    2=Blue    3=Black  
           4=Green    5=Orange    6=Red  
           7=Transparent    8=Yellow    9=White

1 RoHS Compliance

REV	SYM	Revision Record	Appr.	Date
V0	KLS02006	New Version Release	WuHao	2024-11-04

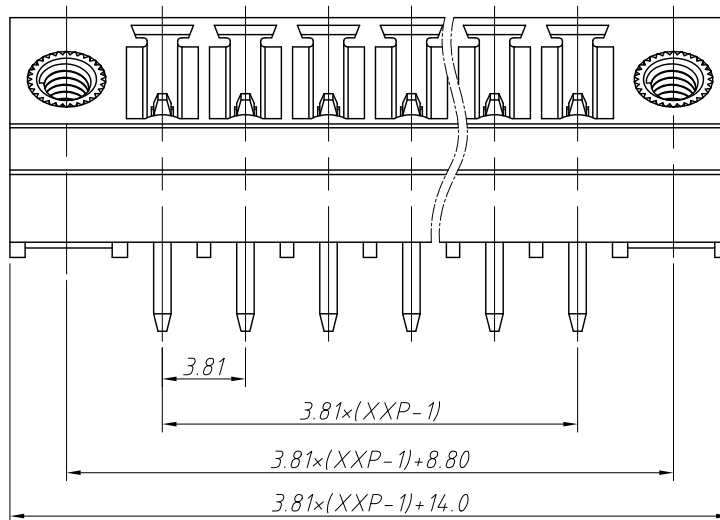
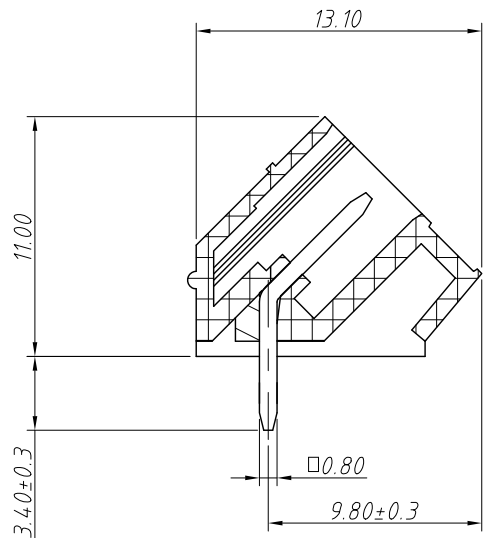


Recommended PCB Layout



Electrical Characteristics	UL	IEC
Rated Voltage	300V	250V
Rated Current	8A	7A
Withstand Voltage	AC2000V/1 min	---

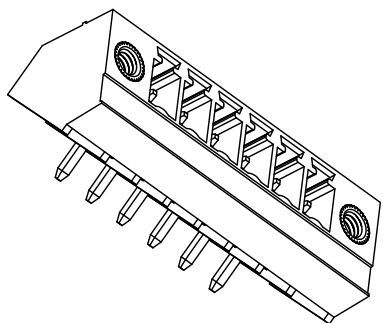
Material and other:  
 Housing:PA66, UL 94V-0  
 Pin Header:Coppo Alloy,Sn Plated  
 Nut:M2.5,Copper Alloy  
 Temp.Range:-40°C ~ +105°C  
 Soldering:+250°C For 5 Sec



Order Information

L-KLS2-EDLY-3.81-XXP-4 09

RoHS  
 Terminal Block  
 Pitch:3.81mm  
 No.:Of (02~24) Pin  
 Color:  
 1=Gray 2=Blue 3=Black  
 4=Green 5=Orange 6=Red  
 7=Transp 8=Yellow 9=White  
 Product Code:00~99



ANGLE TOLERANCE	PROJECTION	Description:	Pitch 3.81mm Terminal Block	
$\pm 3^\circ$				
GENERAL TOLERANCE	UNITS	mm	KLS P/N:	L-KLS2-EDLY-3.81-XXP-409
0~30	$\pm 0.50$	SHEET SIZE	A4	
30~60	$\pm 0.75$	Draw:	WuHao	2024-11-04
60~90	$\pm 1.00$	Check:	Daniel	2024-11-04



NingBo KLS ELECTRONIC CO.,L TD.