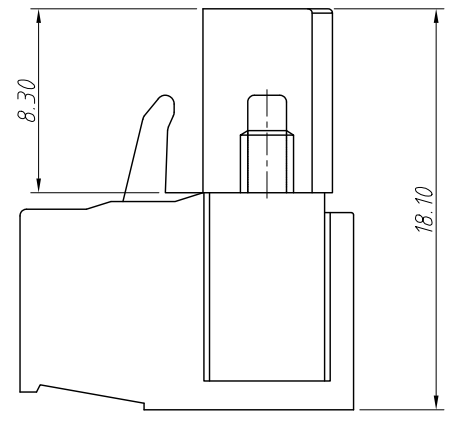
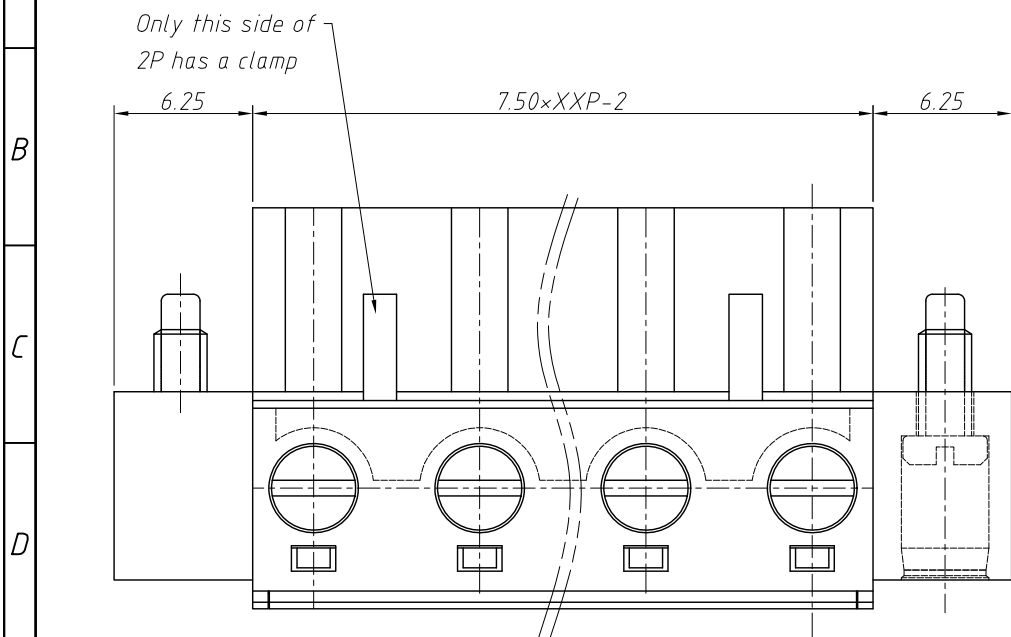


1
RoHS Compliance

2	3	4	5	6	7	8
REV	SYM	Revision Record		Appr.	Date	
V0	KLS02006	New Version Release		WuHao	2024-10-29	

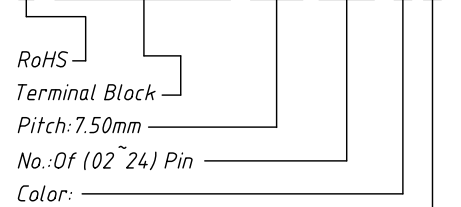


Electrical Characteristics	UL	IEC
Rated Voltage	300V	400V
Rated Current	15A	10A
Withstand Voltage	1600V/1min	6.0KV
Wire Range	28~12 AWG	0.5~2.5mm ²

Material and other:
 Housing:PA66, UL 94V-0
 Pin Header :Copper Alloy,Ni Plated
 Screws/Torque:M3.0/0.5Nm
 Operating temperature:-40°C ~ +105°C
 Steip Length:7~8mm

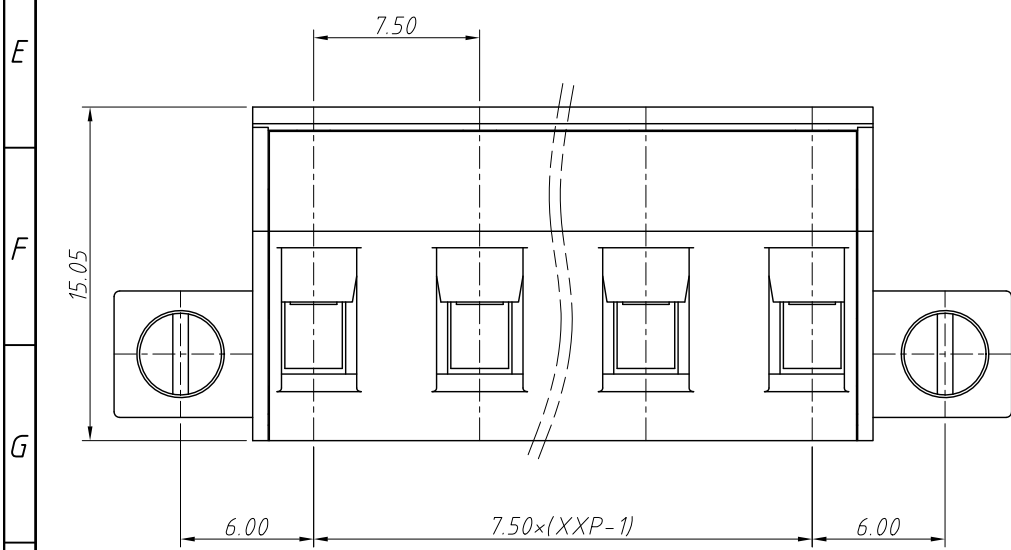
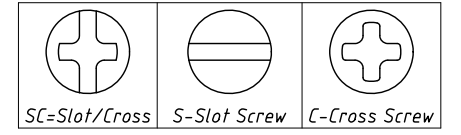
Order Information

L-KLS2-EDCKM-7.50-XXP-XX



- Color:
- 1=Gray 2=Blue 3=Black
 - 4=Green 5=Orange 6=Red
 - 7=Transp 8=Yellow 9=White

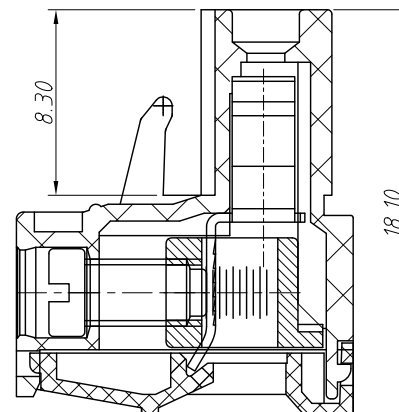
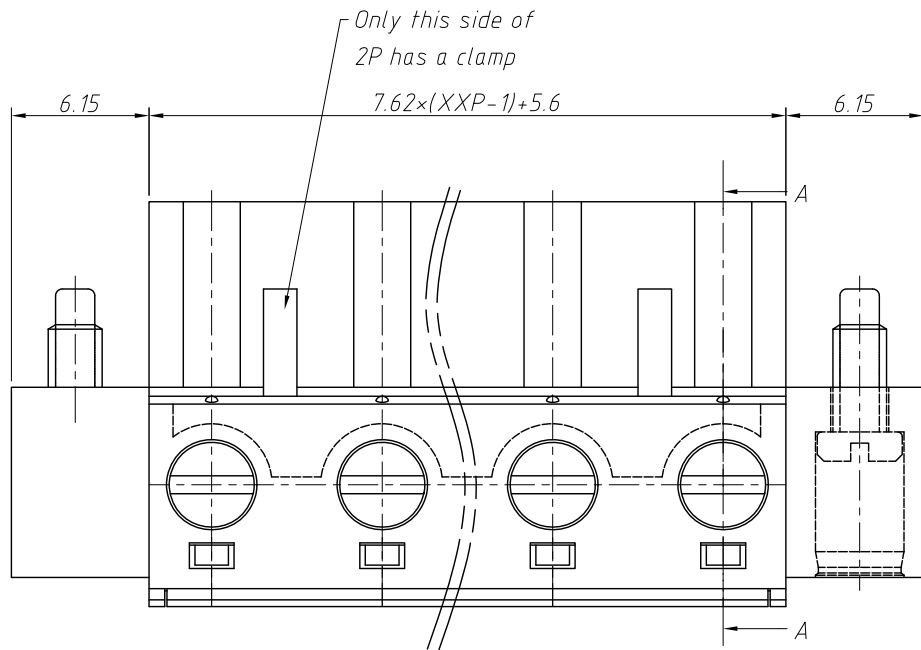
Screw:SC=Slot/Cross
 S-Slot Screw C-Cross Screw



ANGLE TOLERANCE	PROJECTION	Description:				
±3°		Pitch 7.50mm Terminal Block				
GENERAL TOLERANCE	UNITS	mm	KLS P/N:		L-KLS2-EDCKM-7.50-XXP-XX	
0~30	±0.50	SHEET SIZE	A4			
30~60	±0.75	Draw:	WuHao	2024-10-29	NingBo KLS ELECTRONIC CO.,L TD.	
60~90	±1.00	Check:	Daniel	2024-10-29		

1 RoHS Compliance

REV	SYM	Revision Record	Appr.	Date
V0	KLS02006	New Version Release	WuHao	2024-10-29



Section: A-A

Electrical Characteristics	UL	IEC
Rated Voltage	300V	400V
Rated Current	15A	10A
Withstand Voltage	1600V/1min	6.0 KV
Wire Range	28~12 AWG	0.5~2.5mm ²

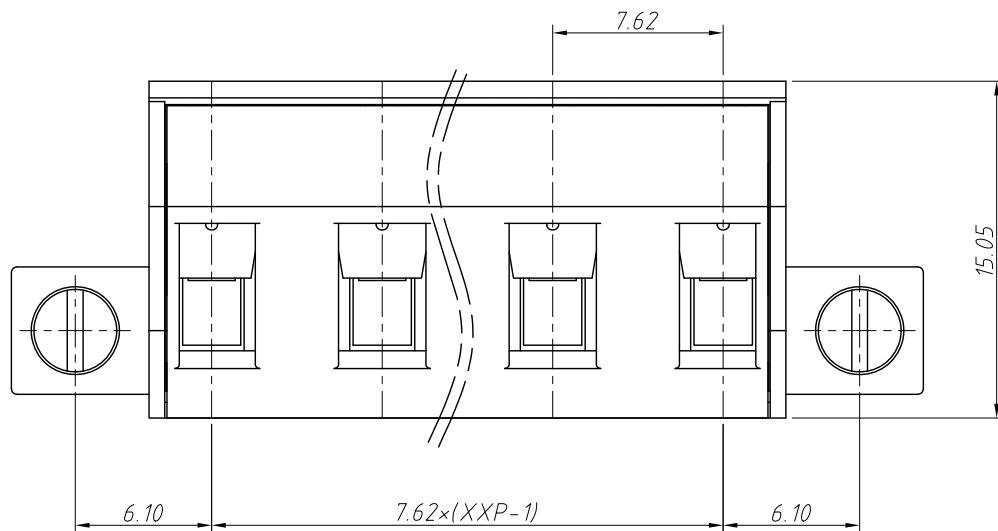
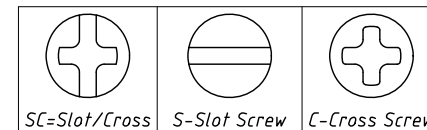
Material and other:
 Housing:PA66, UL 94V-0
 Pin Header :Copper Alloy,Ni Plated
 Screws/Torque:M3.0/0.5Nm
 Operating temperature:-40°C ~ +105°C
 Steip Length:7~8mm

Order Information

L-KLS2-EDCKM-7.62-XXP-XX

RoHS
 Terminal Block
 Pitch:7.62mm
 No.:Of (02~24) Pin
 Color:
 1=Gray 2=Blue 3=Black
 4=Green 5=Orange 6=Red
 7=Transp 8=Yellow 9=White
 Screw:SC=Slot/Cross

S-Slot Screw C-Cross Screw



ANGLE TOLERANCE	PROJECTION	Description:
±3°		Pitch 7.62mm Terminal Block
GENERAL TOLERANCE	UNITS	mm
0~30	±0.50	SHEET SIZE
30~60	±0.75	A4
60~90	±1.00	Draw: WuHao 2024-10-29
	Check: Daniel 2024-10-29	L-KLS2-EDCKM-7.62-XXP-XX



NingBo KLS ELECTRONIC CO.,L TD.