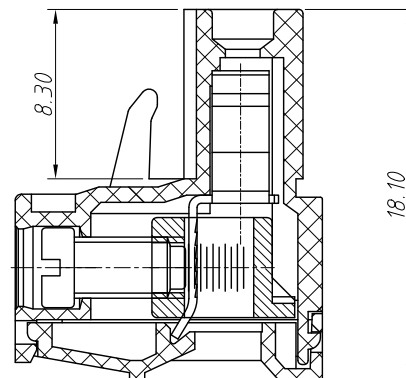
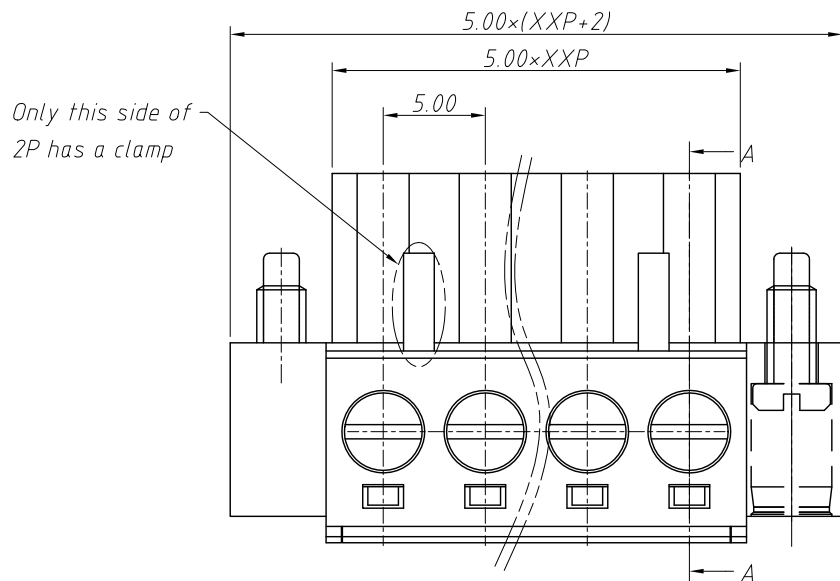
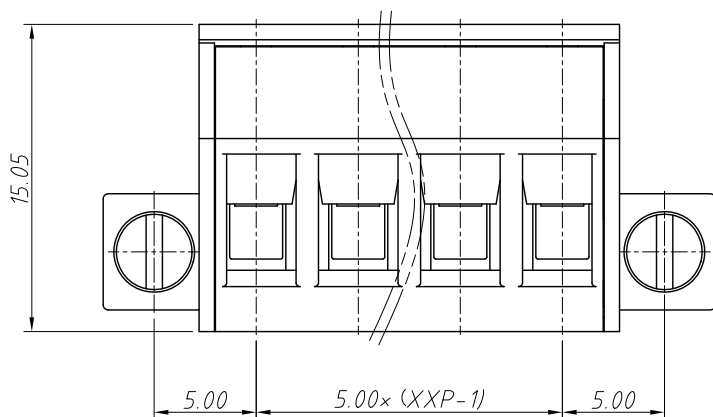


1 RoHS Compliance

|     |          |                     |       |            |
|-----|----------|---------------------|-------|------------|
| REV | SYM      | Revision Record     | Appr. | Date       |
| V0  | KLS02006 | New Version Release | WuHao | 2024-10-29 |



Section: A-A



|                            |               |                    |
|----------------------------|---------------|--------------------|
| Electrical Characteristics | UL            | IEC                |
| Rated Voltage              | 300V          | 320V               |
| Rated Current              | 15A           | 10A                |
| Withstand Voltage          | AC2000V/1 min | ---                |
| Wire Range                 | 28~14 AWG     | 2.5mm <sup>2</sup> |

Material and other:

Housing: PA66, UL 94V-0

Clamp/Cage: Copper Alloy, Ni Plated

Screws/Torque: Steel, M3.0, Zn Plated/0.5Nm

Temp. Range: -40°C ~ +105°C

Steip Length: 7~8mm

Order Information

L-KLS2-EDCKM-5.00-XXP-X X XX

RoHS

Terminal Block

Pitch: 5.00mm

No.: Of (02~24) Pin

Color:

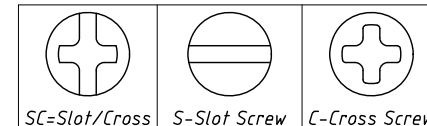
1=Gray 2=Blue 3=Black

4=Green 5=Orange 6=Red

7=Transp 8=Yellow 9=White

Screw: SC=Slot/Cross

S-Slot Screw C-Cross Screw



Product Code: 00~99

|                   |            |                             |
|-------------------|------------|-----------------------------|
| ANGLE TOLERANCE   | PROJECTION | Description:                |
| ±3°               |            | Pitch 5.00mm Terminal Block |
| GENERAL TOLERANCE | UNITS      | mm                          |
| 0~30 ±0.50        | SHEET SIZE | A4                          |
| 30~60 ±0.75       | Draw:      | WuHao 2024-10-29            |
| 60~90 ±1.00       | Check:     | Daniel 2024-10-29           |
|                   |            | L-KLS2-EDCKM-5.00-XXP-XX    |

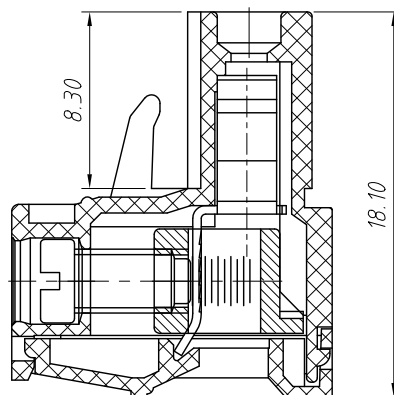
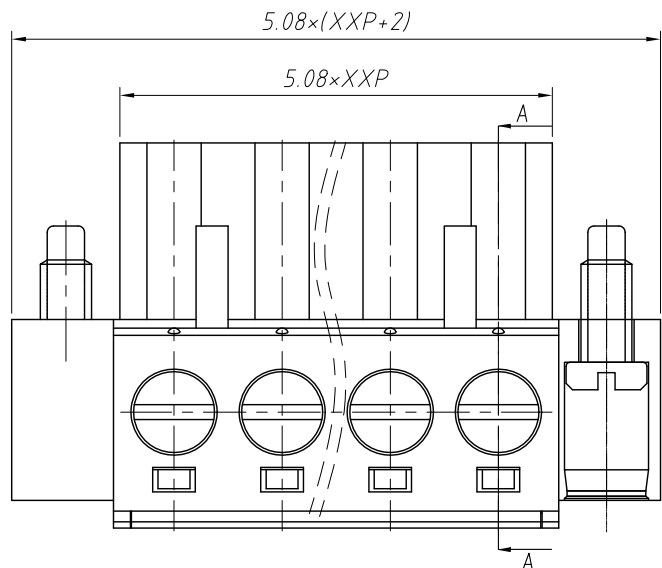


NingBo KLS ELECTRONIC CO.,L TD.

1 RoHS Compliance

| REV | SYM      | Revision Record        | Appr. | Date       |
|-----|----------|------------------------|-------|------------|
| V0  | KLS02006 | New Version Release    | Jenny | 2015-09-01 |
| V1  | KLS02006 | Technology Improvement | WuHao | 2024-10-25 |

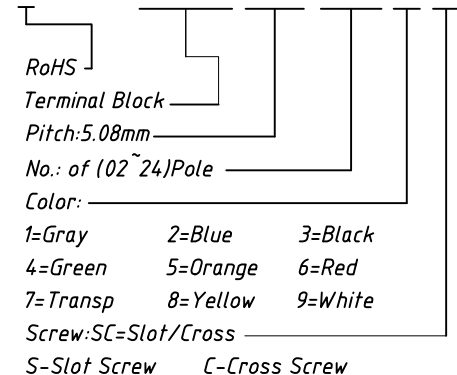
| Electrical Characteristics | UL           | IEC                |
|----------------------------|--------------|--------------------|
| Rated Voltage              | 300V         | 320V               |
| Rated Current              | 15A          | 10A                |
| Withstand Voltage          | AC2000V/1min | ---                |
| Wire Range                 | 14~28 AWG    | 2.5mm <sup>2</sup> |



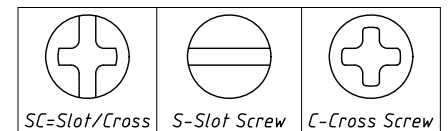
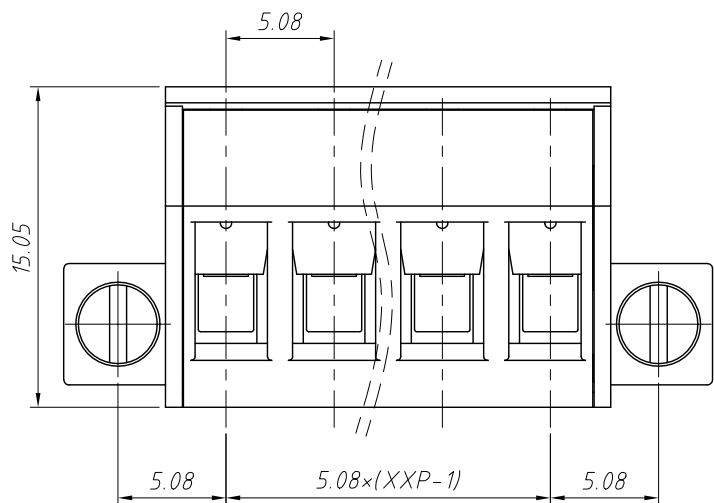
SECTION: A-A

Order Information

L-KLS2-EDCKM-5.08-XXP-X X



Material And Other:  
 Housing: PA66, UL94V-0  
 Clamp/Wire Guard: Copper Alloy, Ni Plated  
 Stripping Length: 7~8mm  
 Screw/Torque: Steel, M3.0, Zn Plated / 0.5N.m  
 Operating Temperature: -40°C ~ +105°C  
 Contact resistance: 20mΩ MAX  
 Insulation resistance: 500MΩ/DC500V



| ANGLE TOLERANCE   | PROJECTION | Description:                       |            |                                |
|-------------------|------------|------------------------------------|------------|--------------------------------|
| ±3°               |            | 5.08mm Screw fixed terminal blocks |            |                                |
| GENERAL TOLERANCE | UNITS      | mm                                 | KLS P/N:   | L-KLS2-EDCKM-5.08-XXP-XX       |
| x.x ±0.30         | SHEET SIZE | A4                                 |            |                                |
| x.xx ±0.20        | Draw:      | WuHao                              | 2024-10-25 | NingBo KLS ELECTRONIC CO.,LTD. |
| x.xxx ±0.10       | Check:     | Daniel                             | 2024-10-25 |                                |