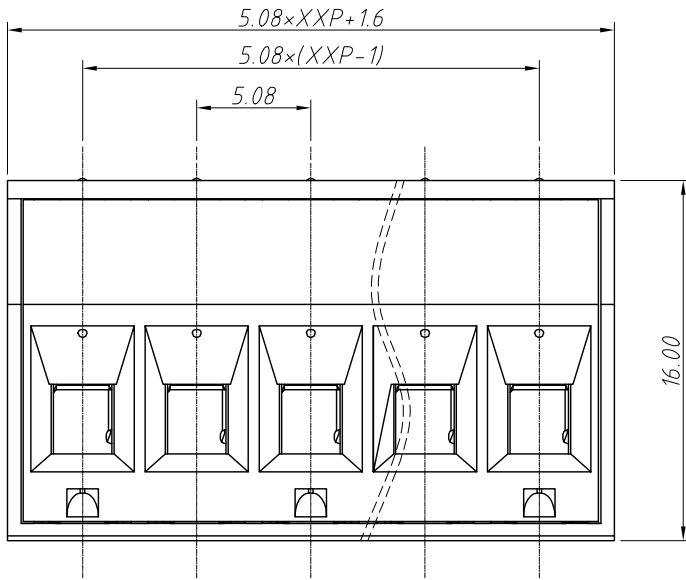
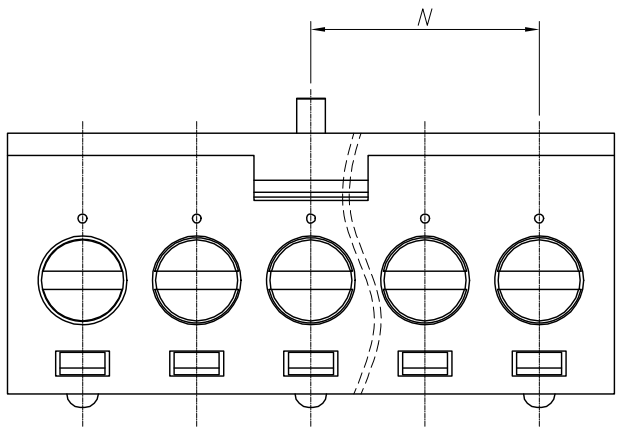
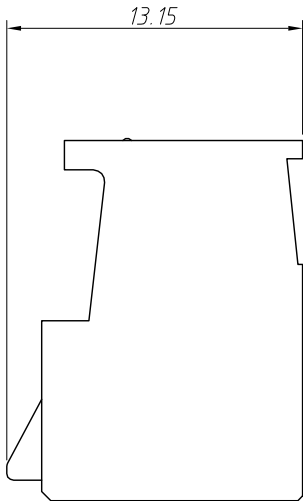


1		2		3		4		5		6		7		8	
RoHS Compliance															
A	Harness	Dimension													
	P	N (mm)													
	2	5.08													
	3	10.16													
B	4	10.16													
	5	10.16													
	6	15.24													
	7	15.24													
C	8	20.32													
	9	20.32													
	10	25.40													
	11	25.40													
D	12	30.48													
	13	30.48													
	14	35.56													
	15	35.56													
E	16	40.64													
	17	40.64													
	18	45.72													
	19	45.72													
F	20	50.80													
	21	50.80													
	22	55.88													
	23	55.88													
G	24	60.96													



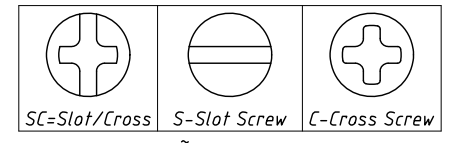
REV	SYM	Revision Record	Appr.	Date
V0	KLS02006	New Version Release	WuHao	2024-10-31

Electrical Characteristics	UL	IEC
Rated Voltage	300V	250V
Rated Current	18A	15A
Withstand Voltage	1600V/1 min	4.0 KV
Wire Range	30 ~ 12 AWG	0.2 ~ 2.5mm <sup>2</sup>

Material and other:  
Housing: PA66, UL94V-0  
Pin Header: Copper Alloy, Sn Plated  
Screw/Torque: M3/0.5N.m  
Stripping Length: 7 ~ 8mm  
Operating temperature: -40°C ~ +105°C

Order Information  
L-KLS2-EDGKJ-5.08-XXP-3 C 09

RoHS  
Terminal Block  
Pitch: 5.08mm  
No.: Of (02 ~ 24) Pin  
Color:  
1=Gray    2=Blue    3=Black  
4=Green    5=Orange    6=Red  
7=Transp    8=Yellow    9=White  
Screw: SC=Slot/Cross  
S-Slot Screw    C-Cross Screw



Product Code: 00 ~ 99

ANGLE TOLERANCE	PROJECTION	Description:	Pitch 5.08mm Terminal Block		
±3°					
GENERAL TOLERANCE	UNITS	mm	KLS P/N:	L-KLS2-EDGKJ-5.08-XXP-3C09	
0 ~ 30	±0.50	SHEET SIZE	A4		
30 ~ 60	±0.75	Draw:	WuHao	2024-10-31	
60 ~ 90	±1.00	Check:	Daniel	2024-10-31	

**KLS** NingBo KLS ELECTRONIC CO.,L TD.