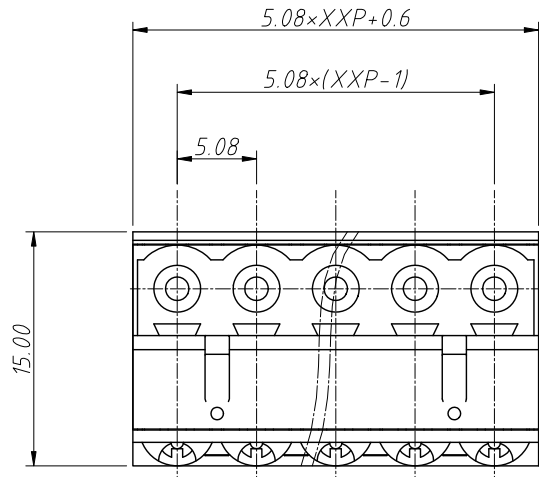


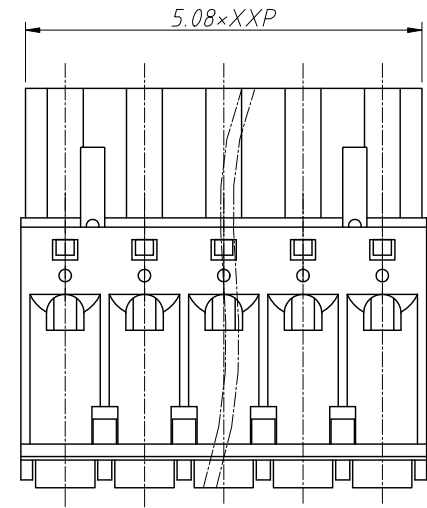
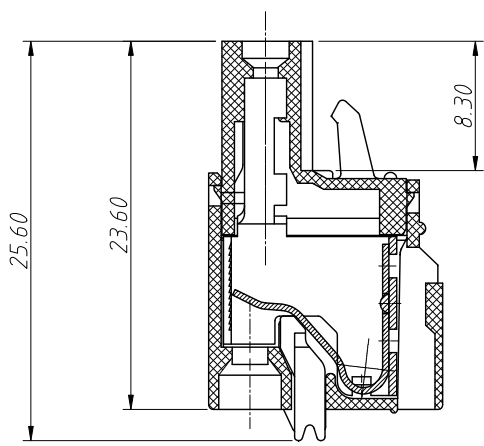
1  
RoHS Compliance

6		7		8	
REV	SYM	Revision Record		Appr.	Date
V0	KLS02006	New Version Release		Jenny	2024-08-29



Electrical Characteristics	UL	IEC
Rated Voltage	300V	320V
Rated Current	10A	10A
Withstand Voltage	2000V / 1 min	---
Wire Range	14 ~ 28 AWG	2.5mm <sup>2</sup>

*Material and other:*  
 Housing: PA66, UL 94V-0  
 Clamp: Copper alloy, Sn Plated  
 Shrapnel: Stainless steel  
 Contact resistance: 20mΩ  
 Insulation resistance: 500MΩ / DC500V  
 Strip Length: 7-8mm  
 Temp. Range: -40°C ~ +105°C



*Order Information*  
 L-KLS2-EDKE-5.08-XXP-4

RoHS  
 Terminal Block  
 Pitch: 5.08mm  
 No.: Of (02 ~ 24) Pin  
 Color:

1=Gray	2=Blue	3=Black
4=Green	5=Orange	6=Red
7=Transp	8=Yellow	9=White

ANGLE TOLERANCE	PROJECTION	Description:			
±3°		Pitch 5.08mm Pluggable Terminal Block, Plug			
GENERAL TOLERANCE	UNITS	mm	KLS P/N:	L-KLS2-EDKE-5.08-XXP-4	
0 ~ 30	±0.50	SHEET SIZE	A4		
30 ~ 60	±0.75	Draw:	Jenny	2024-08-29	
60 ~ 90	±1.00	Check:	Daniel	2024-08-29	

NingBo KLS ELECTRONIC CO.,L TD.