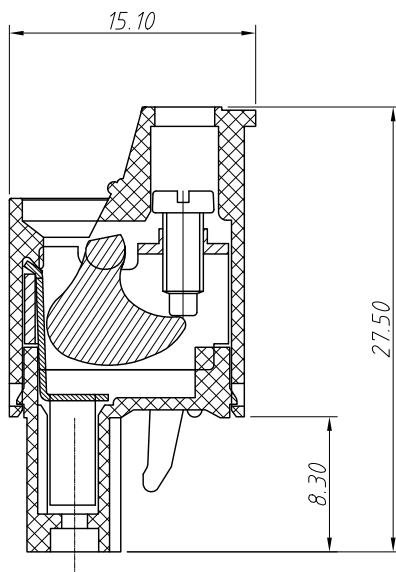
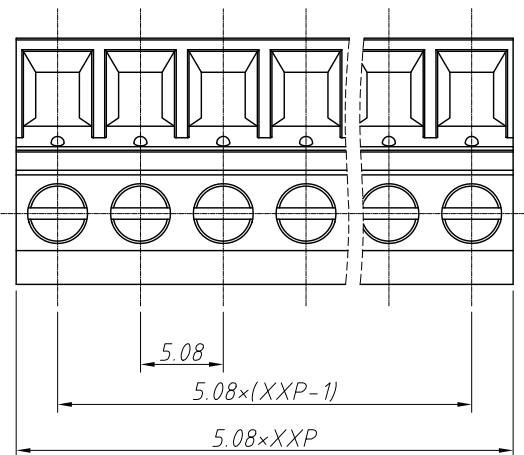
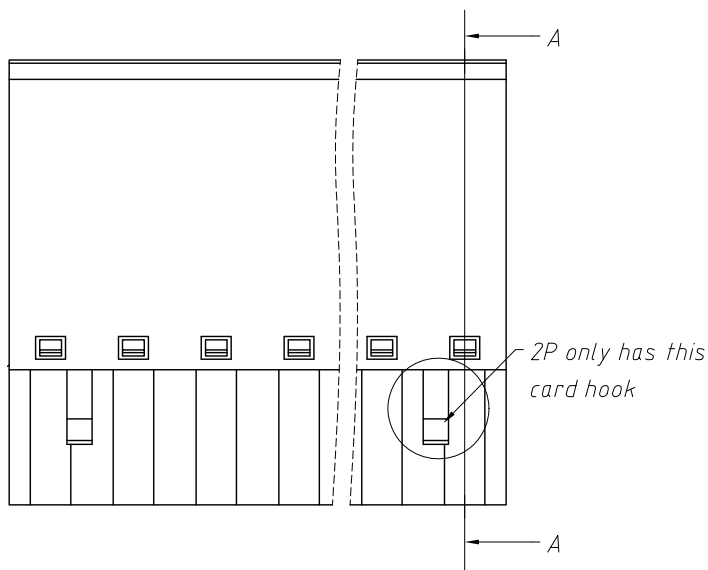


1
RoHS Compliance

Material and other:
 Housing: PA66, UL 94V-0
 Clamp: Phosphor Bronze, Ni Plated
 Cage: Steel, Zn Plated
 Screw/Torque: Steel, M2.5, Zn Plated / 0.4N.m
 Slide Block: Steel, Zn Plated
 Contact resistance: 20mΩ MAX
 Insulation resistance: 500MΩ / DC500V
 Stripping Length: 7~8mm
 Temp. Range: -40°C ~ +105°C



SECTION A-A

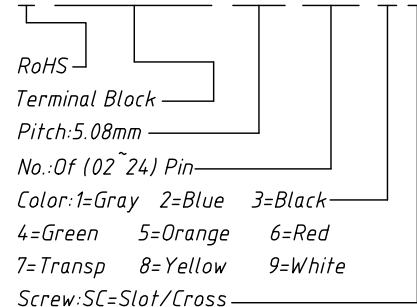


6	7	8		
REV	SYM	Revision Record	Appr.	Date
V0	KLS02006	New Version Release	WuHao	2024-10-31

Electrical Characteristics	UL	IEC
Rated Voltage	300V	450V
Rated Current	15A	17.5A
Withstand Voltage	AC2000V/1 min	---
Wire Range	28~14 AWG	1.5mm ²

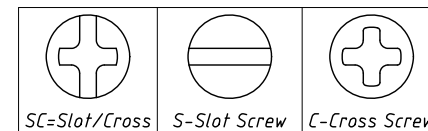
Order Information

L-KLS2-EDKC-5.08-XXP-X X



RoHS
 Terminal Block
 Pitch: 5.08mm
 No. of (02~24) Pin
 Color: 1=Gray 2=Blue 3=Black
 4=Green 5=Orange 6=Red
 7=Transp 8=Yellow 9=White
 Screw: SC=Slot/Cross

S-Slot Screw C-Cross Screw



ANGLE TOLERANCE	PROJECTION	Description:		
±3°		Pitch 5.08mm Terminal Block		
GENERAL TOLERANCE	UNITS	mm	KLS P/N:	L-KLS2-EDKC-5.08-XXP-XX
0~30 ±0.50	SHEET SIZE	A4		
30~60 ±0.75	Draw:	WuHao	2024-10-31	
60~90 ±1.00	Check:	Daniel	2024-10-31	

NingBo KLS ELECTRONIC CO.,L TD.